



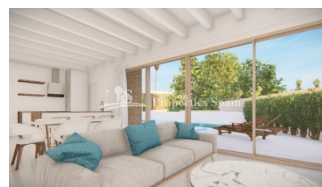
REF: # 10809

()



INFO

PRICE:	385.000 €
PROPERTY TYPE:	Villa
LOCATION:	()
BEDROOMS:	3
Bathrooms:	2
Build:	90 (m2)
Plot:	274 (m2)
Terrace:	171 (m2)
Year:	-
Floor:	1
Old price	-



DESCRIPTION

NEW BUILD ONE LEVEL VILLAS IN SAN MIGUEL DE SALINAS, BLUE LAGOON - close to all amenities and only 5km from the beach! This 90m2 modern designed villa built over one floor consists of 3 bedrooms, 2 bathrooms, open plan kitchen with spacious living room, 81m2 terrace, 90m2 solarium and a 274m2 private garden with swimming pool. Located in the sought after area of BLUE LAGOON has all manner of services within walking distance. Blue lagoon is situated in San Miguel de Salinas which is in the south of the province of Alicante. It is within walking distance to an abundance of amenities including; shops, bars, restaurants, mini golf and bus stop. There are the popular commercial centres La Fuente and Villamartin Plaza, within easy reach by car as are 4 championship golf courses including Campoamor, Las Ramblas, Villamartin and Las Colinas, plus the Zenia Boulevard shopping centre with 150 shops, along with the wonderful blue flag, sandy crystal clear beaches, synonymous with the Orihuela Costa! Alicante airport located 35 minutes drive away and Murcia's Corvera airport is about 1 hour drive away.

STYLE <ul style="list-style-type: none">• Modern• Contemporary	VIEWS <ul style="list-style-type: none">• Panoramic views	AIRCONDITIONING <ul style="list-style-type: none">• Central airconditioning	DISTANCE TO : <div>Beach : 5 Km</div> <div>Airport: 40 Km</div> <div>Town center : 2 Km</div>
FURNITURE <ul style="list-style-type: none">• Not furnished	PARKING <div>Parking no Cars: 1</div>	FLOORING <ul style="list-style-type: none">• Tile floors• Stone floors	KITCHEN <ul style="list-style-type: none">• Open kitchen
GARDEN AND TERRACES <ul style="list-style-type: none">• Open terrace• Private garden	EXTRA <ul style="list-style-type: none">• Built in wardrobes• Alarm• Reinforced door• Double glazed windows		









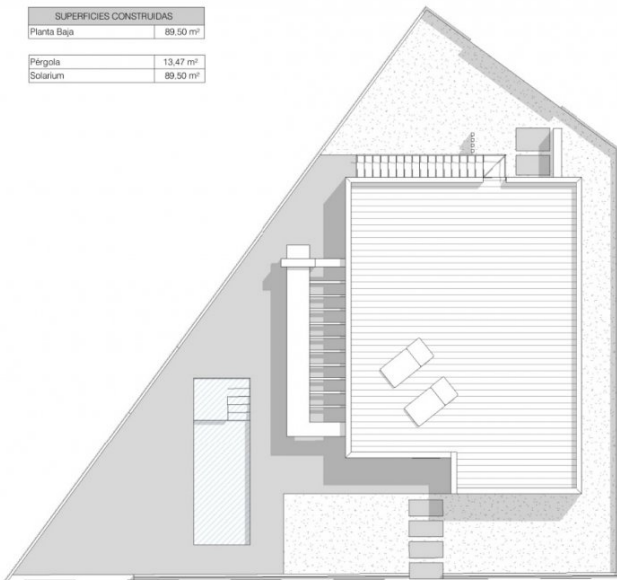




PARCELA

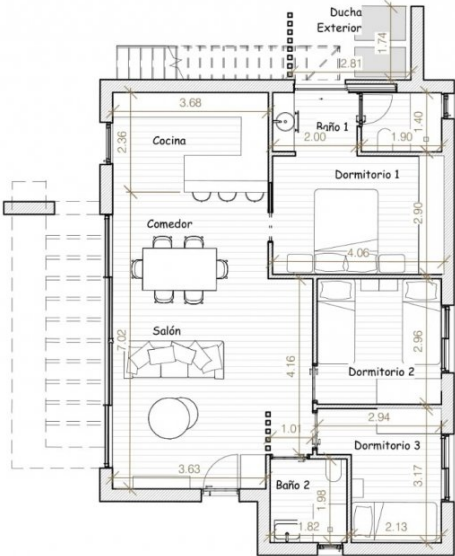
PLANTA BAJA

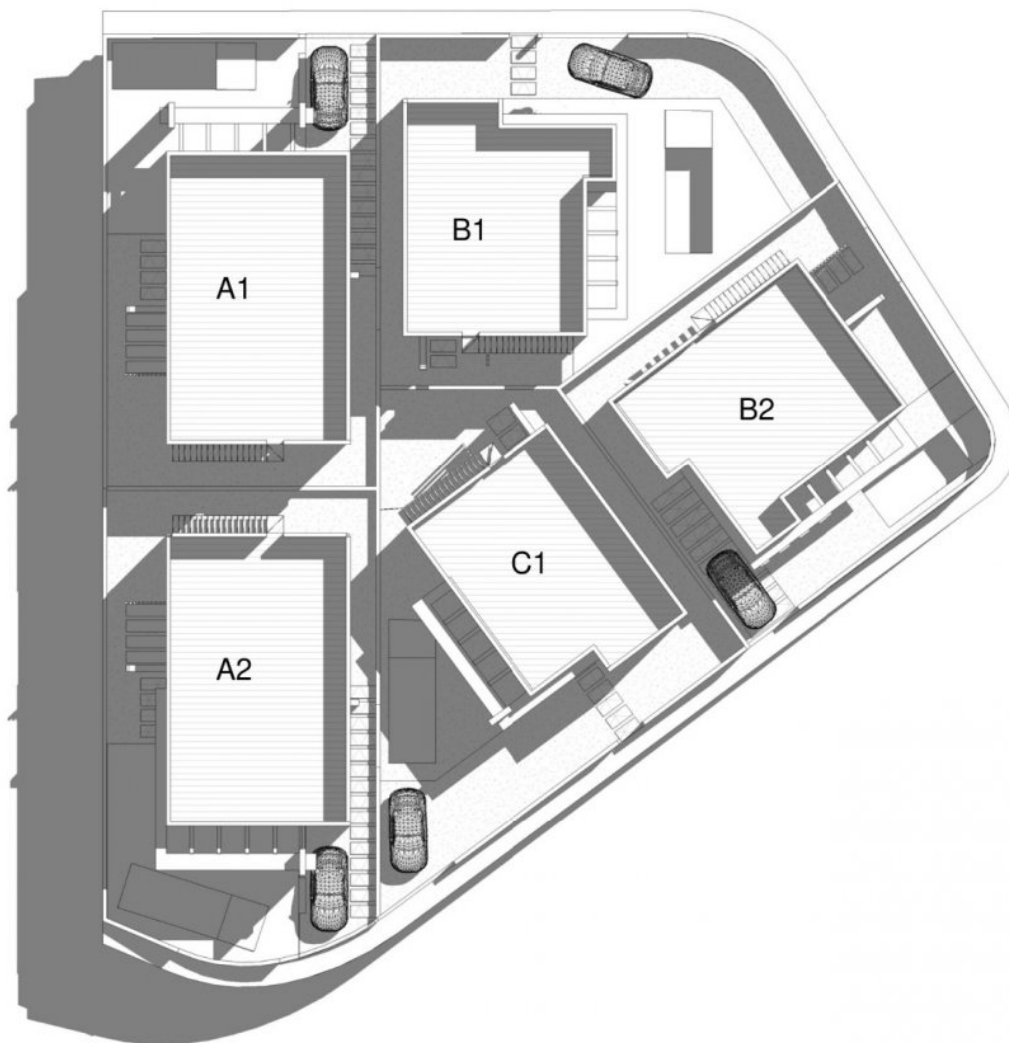
SUPERFICIES CONSTRUIDAS	
Planta Baja	89.50 m ²
Pergola	13.47 m ²
Solarium	89.50 m ²



TIPO C

SUPERFICIES CONSTRUIDAS	
Planta Baja	89.50 m²
Pérgola	13.47 m²
Solarium	89.50 m²









"Experience our experience - Because you deserve the best"