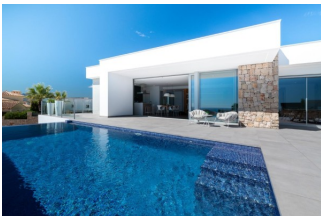


REF: # 11135



INFO

PRICE:	1.115.000 €
PROPERTY TYPE:	Villa
LOCATION:	
BEDROOMS:	3
Bathrooms:	2
Build:	328 (m2)
Plot:	830 (m2)
Terrace:	-
Year:	-
Floor:	-
Old price	-



DESCRIPTION

NEW BUILD LUXURY VILLA IN CUMBRE DEL SOL Contemporary style villa, with a pure and elegant design, with a distribution oriented to let the sea and the Mediterranean light invade the interior of the house, with open day areas in which the kitchen joins the living-dining room, creating a contiguous environment delimited by a central island, an incredible area to enjoy breakfast or a quick meal without losing sight of the sea. The living/dining room is joined to the porch and the pool terrace, creating a single space, as the sliding glass door that separates the two areas is set back on one side, joining the interior with the exterior. This villa has three bedrooms and two bathrooms, the master bedroom is very bright, with en suite bathroom, dressing room and direct access to the main terrace of the house, where the infinity pool is located. It includes the garden and a covered parking. At the most easterly point of the province of Alicante, Spain, lies the Residential Resort Cumbre del Sol. Residents and guests are the first to greet the majestic sun each morning as it rises over the calm waters of the Mediterranean Sea. From our exclusive viewpoint, on the highest point of the municipality of Benitachell, Cumbre del Sol offers panoramic views over the sea and the natural parks that surround us from Jávea to Moraira. Discover our exclusive resort on the Costa Blanca and discover our wonderful first-class flats and villas, our incredible sports and leisure facilities and our complete range of services for those fortunate enough to make Cumbre del Sol their home. Villa located 65 minutes from Alicante airport and 1,5 hour Valencia airport.

VIEWS

- Panoramic views

GARDEN AND TERRACES

- Private garden





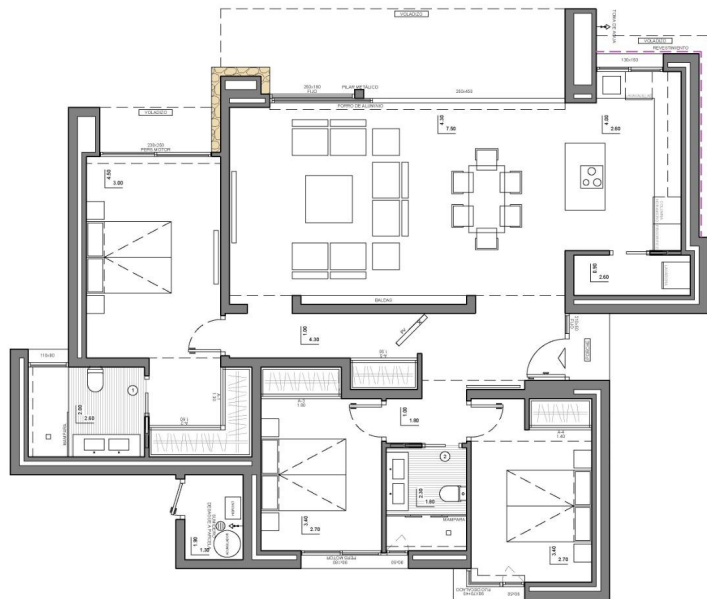
















"Experience our experience - Because you deserve the best"