



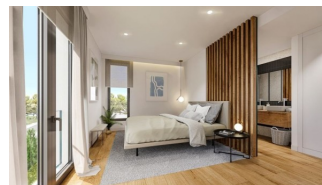
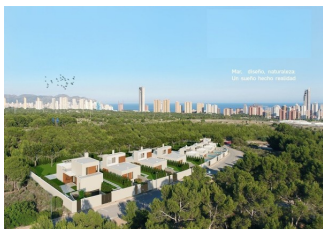
**In Sun  
Properties Spain**  
since 1999

REF: # 11264



#### INFO

|                       |           |
|-----------------------|-----------|
| <b>PRICE:</b>         | 745.000 € |
| <b>PROPERTY TYPE:</b> | Villa     |
| <b>LOCATION:</b>      |           |
| <b>BEDROOMS:</b>      | 3         |
| <b>Bathrooms:</b>     | 3         |
| <b>Build:</b>         | 203 (m2)  |
| <b>Plot:</b>          | 459 (m2)  |
| <b>Terrace:</b>       | -         |
| <b>Year:</b>          | -         |
| <b>Floor:</b>         | -         |
| <b>Old price</b>      | -         |



#### DESCRIPTION

**NEW BUILD VILLAS IN FINESTRAT** New Build residential of 9 villas in Finestrat, in Sierra Cortina – one of the best urbanizations on Costa Blanca. Residential consist of 4 different types of dwellings adopted from the needs of clients. Some of the models comes build over 1 or 2 floors, with underbuild , solarium. All villas has 3 bedrooms, 2 or 3 bathrooms, open plan kitchen with lounge, build-in wardrobes, air conditioning and atherothermal, equipped kitchen, private garden with pool and parking. Residential located in the Sierra Cortina resort complex, next to two golf courses, theme parks, a large shopping centre and a few minutes from the beaches of Benidorm. Finestrat located in the Marina Baixa region of the Costa Blanca, close to neighbouring Benidorm and about 40 kilometres from the city of Alicante and the international airport. The village is situated on the mountainside of Puig Campana and offers beautiful views of the mountains, the coast and the Mediterranean Sea.

**VIEWS**

- Panoramic views

**GARDEN AND  
TERRACES**

- Private garden



VIVIENDA TIPO A

















Entre la naturaleza y el mar.  
A 5 minutos de las playas.







# TIPOLOGIA

## TIPO A

### PLANTA BAJA Y PRIMERA

#### SUPERFICIES DE VIVIENDA

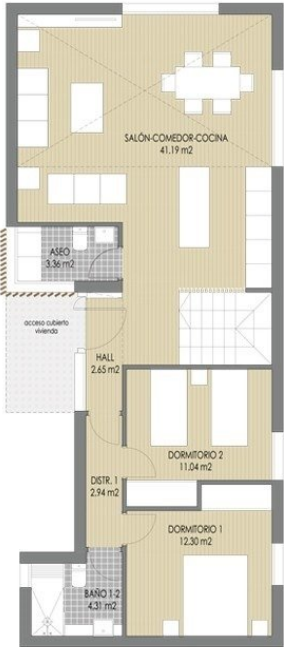
|                    | P.SÓTANO | P.BAJA   | P.PRIMERA | TOTAL     |
|--------------------|----------|----------|-----------|-----------|
| SUP. ÚTIL CERRADA  | 41.07 m² | 77.79 m² | 24.16 m²  | 143.02 m² |
| SUP. ÚTIL ABIERTA  | 0.00 m²  | 0.00 m²  | 18.67 m²  | 18.67 m²  |
| SUP. ÚTIL TOTAL    |          |          |           | 161.69 m² |
| SUP. CONS. CERRADA | 49.78 m² | 97.22 m² | 31.27 m²  | 178.27 m² |
| SUP. CONS. ABIERTA | 0.00 m²  | 5.01 m²  | 19.79 m²  | 24.80 m²  |
| SUP. CONS. TOTAL   |          |          |           | 203.07 m² |

#### SUPERFICIES DE PARCELA

| PARCELA               | 1      | 2      | 3      | 4      | 5      | 6      | 7      | 8      | 9      |
|-----------------------|--------|--------|--------|--------|--------|--------|--------|--------|--------|
| SUP. m2               | 439.00 | 409.43 | 409.43 | 409.43 | 409.43 | 409.43 | 409.43 | 533.40 |        |
| SUP. m2 predio urbano | 226.54 | 203.84 | 203.36 | 204.93 | 210.61 | 218.31 | 198.58 | 232.42 | 437.96 |

#### ESQUEMA DE VIVIENDAS

The diagram illustrates the spatial organization of the housing units. It shows a series of nine parcels, each containing a building footprint. The parcels are labeled from 1 to 9, corresponding to the data in the table above. The layout is designed to maximize the use of the available land while maintaining access to green spaces and infrastructure. The north arrow indicates the orientation of the site, and the scale bar provides a reference for the dimensions of the parcels and buildings.



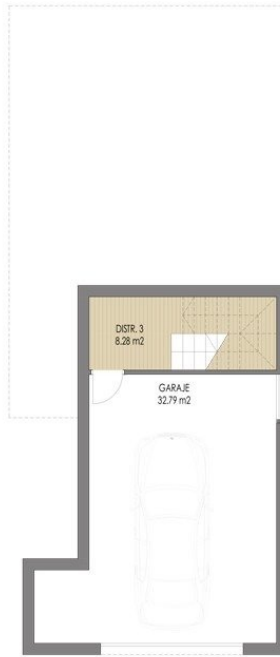
PLANTA BAJA



PLANTA PRIMERA

NOTA: El presente documento es de carácter informativo. Los planos, imágenes, superficies y cotas expresadas podrán experimentar variaciones por exigencias técnicas del proyecto. Escala gráfica: 0 1 2 3 4 5 6 7m



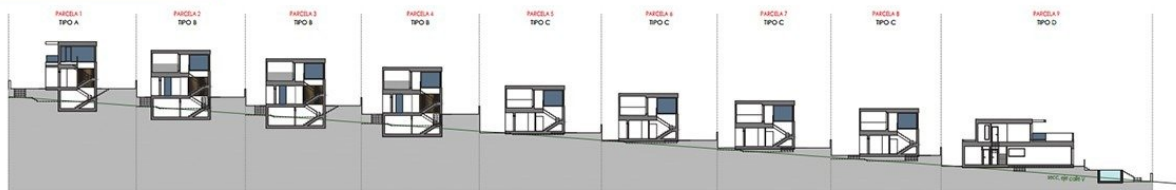


PLANTA SÓTANO

NOTA: El presente documento es de carácter informativo. Los planos, imágenes, superficies y cotas expresadas podrán experimentar variaciones por exigencias técnicas del proyecto. Todo el mobiliario, armarios y electrodomésticos, son meramente decorativos.

Escala gráfica 0 1 2 3 4 5 6 7m

## ORDENACIÓN



*"Experience our experience - Because you deserve the best"*