



REF: # 11823

()



#### INFO

<b>PRICE:</b>	275.000 €
<b>PROPERTY TYPE:</b>	Apartment
<b>LOCATION:</b>	()
<b>BEDROOMS:</b>	2
<b>Bathrooms:</b>	2
<b>Build:</b>	80 (m2)
<b>Plot:</b>	-
<b>Terrace:</b>	16 (m2)
<b>Year:</b>	-
<b>Floor:</b>	-
<b>Old price</b>	-



#### DESCRIPTION

**NEW BUILD RESIDENTIAL IN TORREVIEJA** New Build residential just 5 minutes walk from Los Locos beach, in the centre of Torrevieja. This residential has 16 properties, with 1, 2 or 3 bedrooms and 1 and 2 bathrooms, all with terraces from 7m2 to 55m2, facing South or West, with community solarium, jacuzzi, chillout area and sauna. An options underground parking space at an extra cost. Torrevieja is a Spanish town in the province of Alicante, on the Costa Blanca. It is known for its typically Mediterranean climate and coastline. It has boardwalks with resorts along its sandy beaches. The small Museum of the Sea and Salt houses exhibitions on the fishing and salt history of the city. In the interior, the Lagunas de La Mata-Torrevieja Natural Park has trails and two salty lagoons, one pink and the other green. Alicante airport located 40 minutes away and Murcia airport about 1 hour away.

<b>STYLE</b> <ul style="list-style-type: none"><li>• Modern</li><li>• Contemporary</li></ul>	<b>VIEWS</b> <ul style="list-style-type: none"><li>• Panoramic views</li></ul>	<b>AIRCONDITIONING</b> <ul style="list-style-type: none"><li>• Central airconditioning</li></ul>	<b>DISTANCE TO :</b> <div>Beach : 200 m</div> <div>Airport: 40 Km</div> <div>Town center : 50 m</div>
<b>FURNITURE</b> <ul style="list-style-type: none"><li>• Not furnished</li></ul>	<b>MAIN LIVING AREA</b> <ul style="list-style-type: none"><li>• Sauna</li></ul>	<b>FLOORING</b> <ul style="list-style-type: none"><li>• Tile floors</li></ul>	<b>KITCHEN</b> <ul style="list-style-type: none"><li>• Open kitchen</li></ul>
<b>EXTRA</b> <ul style="list-style-type: none"><li>• Outdoor jacuzzi</li><li>• Built in wardrobes</li><li>• Reinforced door</li><li>• Double glazed windows</li></ul>			



















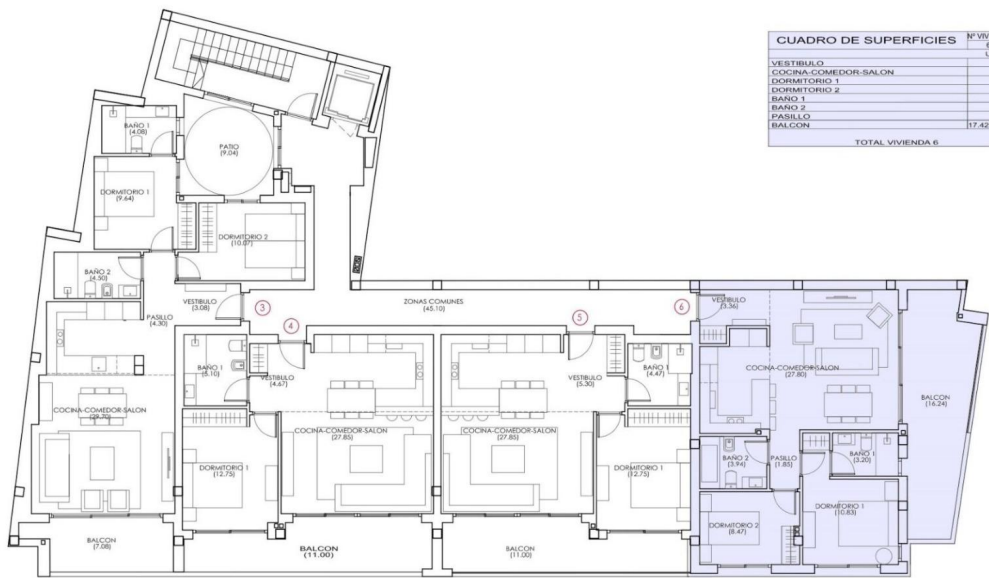








VIVIENDA 6  
La vista desde arriba



CUADRO DE SUPERFICIES	N° VIVIENDA		TIPO
	6	1*	F
	UTILES		CONSTRUIDAS
VESTIBULO	3.36		
COCINA-COMEDOR-SALON	27.80		
DORMITORIO 1	10.93		70.19
DORMITORIO 2	8.47		
BANO 1	3.20		
BANO 2	3.94		
PASILLO	1.88		
BALCON	17.42x0.50=8.71	19.86x0.50=9.93	
TOTAL VIVIENDA 6		68.16	80.12

PLANTA PRIMERA 1



"Experience our experience - Because you deserve the best"