



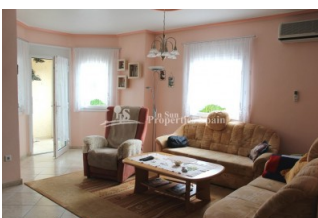
REF: # 4358

QUESADA-ROJALES (DONA PEPA)



INFO

PRIX:	185.000 €
Type de propriété:	Maison mitoyenne
EMPLACEMENT:	Quesada-Rojales (Dona Pepa)
CHAMBRES À COUCHER:	2
BA ENFANTS:	2
BUILT:	126 (m2)
PAS:	-
TERRASSE:	-
A ENFANTS:	2002
DE PLANTE:	-
MESSAGE	-



DESCRIPTION

Immaculate and spacious 2/3 DOUBLE BEDROOM, 2 BATHROOM, FORTUNA ESPECIAL located in Urb DONA PEPA – CIUDAD QUESADA. East/South/West facing; the property occupies a corner plot and is split over two levels. An enclosed front terrace with door to the lounge/diner, an American style kitchen with utility room, shower room and a dining room (originally bedroom 3 and could easily be converted back). Upstairs there is a family bathroom, two double bedrooms with built in wardrobes and a large sun terrace. The property benefits from PRIVATE PARKING, GARAGE and access to the Community POOL. Doña Pepa is a modern urbanisation belonging to Ciudad Quesada and has all the amenities which include supermarkets, bars, hotel and shops as well as a bank. Ciudad Quesada town centre is a ten minute walk from Doña Pepa. In Ciudad Quesada itself you will find international supermarkets, restaurants, banks, a medical centre as well as a water park. The property is ideally located if you are a golf enthusiast, with La Marquesqa Golf Club just a five minute drive away. The nearest beaches are at Guardamar/Campomar and La Mata ten minutes drive away, all making this your perfect home in the sun! Nearest Airports: San Javier (Murcia) - Approx 30 minute drive Alicante Airport - Approx 30 minute drive

STYLE	VIEW	CLIMATISATION	DISTANCE :
<ul style="list-style-type: none">Méditerranée	<ul style="list-style-type: none">Panoramico	<ul style="list-style-type: none">manger	Beach : 6 Km aéroport: 50 Km : 1 Km
POSITION	MEUBLÉ	PARKING PAS. CAR	FRAIS
Sud-Ouest	<ul style="list-style-type: none">meublé	Garage no. Car : 1 : 2	Communauté : 758 € I.B.I : 266 €
ZONES	ÉTAGE	CUISINE	JARD RIVIÈRE ET TERRASSES N
<ul style="list-style-type: none">stockage	<ul style="list-style-type: none">TuilesStone	<ul style="list-style-type: none">CuisineCuisine équipéeGranit	<ul style="list-style-type: none">Terrasse couverteTerrasse ouverteirrigation automatiquemurs en pierreJard RIVER n privéeJard RIVER Communauté
CHAUFFAGE	EXTRA		
<ul style="list-style-type: none">Radio	<ul style="list-style-type: none">IntégréAlarmePorte de sécuritéDouble vitrageSatellite TVStockage		

"Experience our experience - Because you deserve the best"