



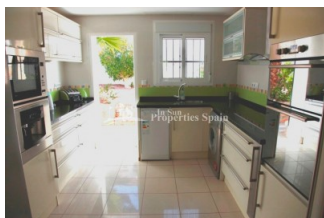
REF: # 4363

ORIHUELA COSTA (VILLAMARTIN GOLF )



#### INFO

<b>PRIX:</b>	480.000 €
<b>Type de propriété:</b>	Villa
<b>EMPLACEMENT:</b>	Orihuela Costa (Villamartin Golf )
<b>CHAMBRES À COUCHER:</b>	5
<b>BA ENFANTS:</b>	4
<b>BUILT:</b>	332 (m2)
<b>PAS:</b>	1.009 (m2)
<b>TERRASSE:</b>	-
<b>A ENFANTS:</b>	1998
<b>DE PLANTE:</b>	-
<b>MESSAGE</b>	578.000 €



#### DESCRIPTION

Located in the popular area of LAS BRISAS, Villamartin Golf and set on a 1009m2 plot this DETACHED Villa of 332m2 is divided into 2 SELF-CONTAINED apartments. To the Ground Floor there is a 166m2, 2 bed, 2 bath apartment with lounge, dining area and kitchen. To the First Floor, again of 166m2, a 3 bed, 2 bath apartment with lounge, dining area and kitchen. Within the plot there is a 12x5 private swimming pool, low maintenance garden, jacuzzi, Hot Tub, Sauna and carport. The property would be ideal for a multitude of uses, from a development project, rental investment, holiday home or permanent residence only 200m from Villamartin Club House and Villamartin Plaza, along with an array of amenities including a medical centre and school. Just 3km to the new commercial centre Zenia Boulevard with 150 shops and 4km to La Zenia Beach. Villamartin offers all year round services including bars, restaurants, outdoor eating and a selection of shops. Nearest Airports: Alicante Airport (50 minutes away). San Javier Airport (20 minutes away)

STYLE	VIEW	CLIMATISATION	DISTANCE :
<ul style="list-style-type: none"><li>Méditerranée</li></ul>	<ul style="list-style-type: none"><li>Panoramico</li></ul>	<ul style="list-style-type: none"><li>Chambres</li></ul>	Beach : 3 Km aéroport: 50 Km : 500 m
MEUBLÉ	PARKING PAS. CAR	FRAIS	ZONES
<ul style="list-style-type: none"><li>meublé</li></ul>	Garage no. Car : 1 : 1	I.B.I : 900 €	<ul style="list-style-type: none"><li>Sauna</li></ul>
ÉTAGE	CUISINE	JARD RIVIÈRE ET TERRASSES N	EXTRA
<ul style="list-style-type: none"><li>Tuiles</li><li>Stone</li></ul>	<ul style="list-style-type: none"><li>Cuisine</li><li>Cuisine équipée</li><li>Granit</li></ul>	<ul style="list-style-type: none"><li>Terrasse ouverte</li><li>Jard RIVER n privée</li></ul>	<ul style="list-style-type: none"><li>Cuve extérieure</li><li>Porte de sécurité</li><li>Double vitrage</li></ul>

*"Experience our experience - Because you deserve the best"*