



**In Sun
Properties Spain**
since 1999

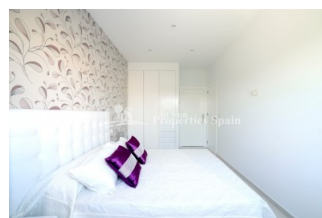
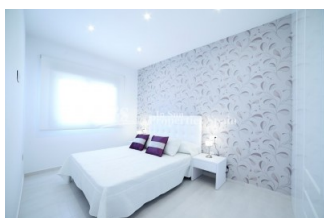
REF: # 4529

ORIHUELA COSTA (LO PAGAN-SAN PEDRO)



INFO

PRIX:	154.950 €
Type de propriété:	Appartement
EMPLACEMENT:	Orihuela Costa (Lo Pagan-San Pedro)
CHAMBRES À COUCHER:	2
BA ENFANTS:	2
BUILT:	65 (m2)
PAS:	-
TERRASSE:	25 (m2)
A ENFANTS:	
DE PLANTE:	-
MESSAGE	-



DESCRIPTION

LAST TWO APARTMENTS REMAIN in SAN PEDRO DEL PINATAR, MAR MENOR. 24 modern 'maisonette' apartments with communal pool and gardens located close to the beaches of the Mar Menor. Location, Location, Location ... These modern, new build apartments are located in the popular coastal town of San Pedro, in a residential area just a short 500m walk to the beach, marina and town. These 2 bedroom, 2 bathroom (both en-suite) apartments offer plenty of space with a walk through lounge/kitchen and dining room. This is a 2 bedroom, 2 bathroom penthouse of 63m2 with 58m2 solarium and 7m2 terrace. They are designed for modern living with a fresh open feel and incorporate a central island, front and rear patio doors, dropped ceiling in the kitchen area and external storage solutions really make these stand out from the others. Delivey February 2018. Conveniently close to San Javier (Murcia) airport. The "Dos Mares" shopping centre is just on the doorstep, an excellent shopping area with supermarkets, restaurants, boutique shops and a cinema. The promenade of Santiago de la Ribera and Lo Pagan are a total delight throughout the day and evening, with countless restaurants to choose from, and some great little "tapas" bars just by the sea, or the ever popular marina. This area has a thalassotherapy spa and also offers a variety of sports activities, including seasonal water sports. With some particularly good golf courses very close by.

STYLE <ul style="list-style-type: none"> moderne contemporain 	VIEW <ul style="list-style-type: none"> Panoramico 	DISTANCE : <div>Beach : 500 m</div> <div>aéroport: 20 Km</div> <div>: 500 m</div>	POSITION <div>Ouest du Sud-Est</div>
MEUBLÉ <ul style="list-style-type: none"> Vide 	PARKING PAS. CAR <div>Garage no. Car : 1</div> <div>: 1</div>	ÉTAGE <ul style="list-style-type: none"> Tuiles Stone 	CUISINE <ul style="list-style-type: none"> Cuisine Cuisine équipée Granit
JARD RIVIÈRE ET TERRASSES N <ul style="list-style-type: none"> Terrasse couverte Terrasse ouverte Paysage murs en pierre Jard RIVER n privée Jard RIVER Communauté 	EXTRA <ul style="list-style-type: none"> Intégré Porte de sécurité Double vitrage 		

"Experience our experience - Because you deserve the best"