



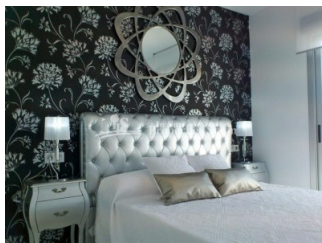
REF: # 5808

ORIHUELA COSTA (SAN PEDRO DEL PINTAR)



#### INFO

|                            |                                       |
|----------------------------|---------------------------------------|
| <b>PRIX:</b>               | 239.950 €                             |
| <b>Type de propriété:</b>  | Villa                                 |
| <b>EMPLACEMENT:</b>        | Orihuela Costa (San Pedro del Pintar) |
| <b>CHAMBRES À COUCHER:</b> | 3                                     |
| <b>BA ENFANTS:</b>         | 2                                     |
| <b>BUILT:</b>              | 108 (m2)                              |
| <b>PAS:</b>                | 138 (m2)                              |
| <b>TERRASSE:</b>           | 37 (m2)                               |
| <b>A ENFANTS:</b>          |                                       |
| <b>DE PLANTE:</b>          | -                                     |
| <b>MESSAGE</b>             | -                                     |



#### DESCRIPTION

10 month build time. With mild winters and hot summers, it is no wonder so many people choose Spain as the choice destination year after year for their second home or as their permanent residence! These stunning Villas boast 108sqm comprising of 3 bedrooms, 2 bathrooms and occupy a 138m2 plot. Located in SAN PEDRO DEL PINATAR they have been thoughtfully designed to provide the perfect individual home, featuring large terraces on the ground floor with off road parking, private swimming pool and large format glass windows. The first floor offers 2 generous sized bedrooms and large terrace from the master bedroom ... options for 37m2 roof solarium (additional €9,000). A great location just a few hundred meters to the main high street in San Pedro del Pinatar and close to the nature salt lagoons, beaches with plenty of restaurants, tapas bars and sports facilities.

\*Images are of a previous similar show house\*

| STYLE                                                                                                                                  | VIEW                                                                                                     | DISTANCE :                                                           | POSITION                                                                                       |
|----------------------------------------------------------------------------------------------------------------------------------------|----------------------------------------------------------------------------------------------------------|----------------------------------------------------------------------|------------------------------------------------------------------------------------------------|
| <ul style="list-style-type: none"><li>moderne</li><li>contemporain</li></ul>                                                           | <ul style="list-style-type: none"><li>Panoramico</li></ul>                                               | Beach : 1 Km<br>aéroport: 10 Km<br>: 1 Km                            | Ouest du Sud-Est                                                                               |
| MEUBLÉ                                                                                                                                 | PARKING PAS. CAR                                                                                         | ÉTAGE                                                                | CUISINE                                                                                        |
| <ul style="list-style-type: none"><li>Vide</li></ul>                                                                                   | : 1                                                                                                      | <ul style="list-style-type: none"><li>Tuiles</li><li>Stone</li></ul> | <ul style="list-style-type: none"><li>Cuisine</li><li>Cuisine équipée</li><li>Granit</li></ul> |
| JARD RIVIÈRE ET TERRASSES N                                                                                                            | EXTRA                                                                                                    |                                                                      |                                                                                                |
| <ul style="list-style-type: none"><li>Terrasse couverte</li><li>Terrasse ouverte</li><li>Paysage</li><li>Jard RIVER n privée</li></ul> | <ul style="list-style-type: none"><li>Intégré</li><li>Porte de sécurité</li><li>Double vitrage</li></ul> |                                                                      |                                                                                                |

*"Experience our experience - Because you deserve the best"*