



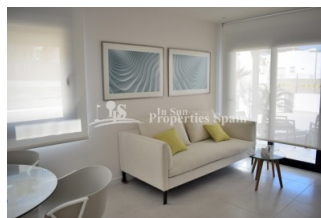
REF: # 5891

ORIHUELA COSTA (PUNTA PRIMA)



#### INFO

<b>PRIX:</b>	206.900 €
<b>Type de propriété:</b>	Appartement
<b>EMPLACEMENT:</b>	Orihuela Costa (Punta Prima)
<b>CHAMBRES À COUCHER:</b>	3
<b>BA ENFANTS:</b>	2
<b>BUILT:</b>	72 (m2)
<b>PAS:</b>	123 (m2)
<b>TERRASSE:</b>	11 (m2)
<b>A ENFANTS:</b>	
<b>DE PLANTE:</b>	-
<b>MESSAGE</b>	-



#### DESCRIPTION

LAST remain modern Apartment in PUNTA PRIMA. This superb 3 bedroom, 2 bathroom Apartment is located at the Arena Beach development and consist of only 12 exclusive properties set on either the ground floor or first floor. They are set in a fantastic location just a few minutes' walk from the local commercial centre with plenty of restaurants, bars, shops and only 10-15 minutes walk from the golden sand BEACHES of PUNTA PRIMA. The largest and most visited commercial centre, La Zenia Boulevard is also only a 20 minute walk away. ~This ground floor apartment has a large private garden of 123,37 m2 and 11 m2 terrace, whilst the top floor have a spacious 65m2 solarium but have all been sold by now. The 71,08 m2 homes boast a bright, spacious lounge, open plan modern kitchen/dining area, master bedroom with en-suite, two additional bedrooms and a guest bathroom. The apartments also come with secure underground parking and storage and have a beautiful communal area with swimming pool. Punta Prima is a residential area that is located only 5 minutes from Torrevieja and to the best beaches in Orihuela Costa, which you are able to enjoy most of the year. It is almost perfect for those who want to live in Spain or just want to come on Holidays. It also counts on a wide selection of activities and services. It is handy for golf lovers; within a short distance ( 10 min drive ) you can find 4 exceptional golf courses: Villamartín, Las Ramblas, Campoamor and Las Colinas. Only 45 min drive on A7 to Alicante or Corvera Airport !!

<b>STYLE</b> <ul style="list-style-type: none"> <li>moderne</li> <li>contemporain</li> </ul>	<b>VIEW</b> <ul style="list-style-type: none"> <li>Panoramico</li> </ul>	<b>DISTANCE :</b> <div>Beach : 2 Km</div> <div>aéroport: 50 Km</div> <div>: 1 Km</div>	<b>POSITION</b> <div>Ouest du Sud-Est</div>
<b>MEUBLÉ</b> <ul style="list-style-type: none"> <li>Vide</li> </ul>	<b>PARKING PAS. CAR</b> <div>: 1</div>	<b>ZONES</b> <ul style="list-style-type: none"> <li>stockage</li> </ul>	<b>ÉTAGE</b> <ul style="list-style-type: none"> <li>Tuiles</li> <li>Stone</li> </ul>
<b>JARD RIVIÈRE ET TERRASSES N</b> <ul style="list-style-type: none"> <li>Terrasse couverte</li> <li>Terrasse ouverte</li> <li>Paysage</li> <li>murs en pierre</li> <li>Jard RIVER n privée</li> <li>Jard RIVER Communauté</li> </ul>	<b>EXTRA</b> <ul style="list-style-type: none"> <li>Intégré</li> <li>Porte de sécurité</li> <li>Double vitrage</li> <li>Stockage</li> </ul>		

*"Experience our experience - Because you deserve the best"*