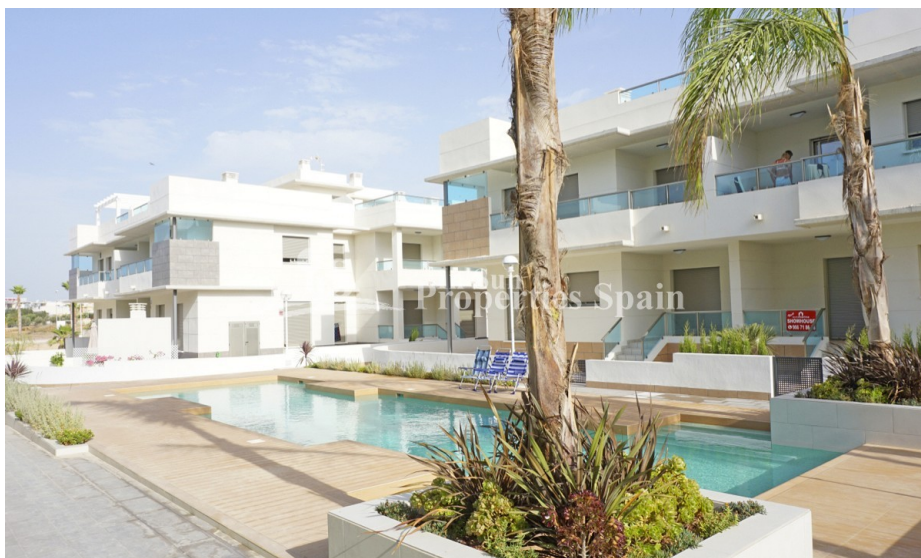




**In Sun
Properties Spain**
since 1999

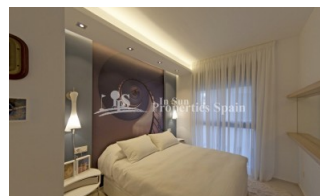
REF: # 5948

QUESADA-ROJALES (DONA PEPA)



INFO

PRIX:	188.000 €
Type de propriété:	Appartement
EMPLACEMENT:	Quesada-Rojales (Dona Pepa)
CHAMBRES À COUCHER:	3
BA ENFANTS:	2
BUILT:	102 (m2)
PAS:	-
TERRASSE:	35 (m2)
A ENFANTS:	
DE PLANTE:	-
MESSAGE	-



DESCRIPTION

Gran Sol is a new KEY READY residential located in Doña Pepa, an elegant urbanisation with wide avenues, wonderful views to the Natural Park and the salt lakes with a wide range of leisure activities and all the necessary amenities. Available are these 3 bedrooms, 2 bathroom Ground Floor, Corner Apartments of 102m2 with 35m2 private garden with tiled area and artificial grass, storage room, access to four swimming pools, beautiful Green areas, Gym and a private gated parking inside the residential. Each block also has a lift that leads directly to the solarium. Its high-tech architecture with pure lines combines perfectly with its predominant colour (white) giving a sensation of harmony. Doña Pepa is a modern urbanisation belonging to Ciudad Quesada and has all the amenities which include supermarkets, bars, hotel and shops as well as a bank. Ciudad Quesada town centre is a ten minute walk from Doña Pepa. In Ciudad Quesada itself you will find international supermarkets, restaurants, banks, a medical centre as well as a water park. The property is ideally located if you are a golf enthusiast, with La Marquesqa Golf Club just a five minute drive away. The nearest beaches are at Guardamar/Campomar and La Mata ten minutes drive away. Nearest Airports: San Javier (Murcia) - Approx 30 minute drive Alicante Airport - Approx 30 minute drive

STYLE	VIEW	DISTANCE :	POSITION
<ul style="list-style-type: none"> moderne contemporain 	<ul style="list-style-type: none"> Panoramico 	Beach : 7 Km aéroport: 30 Km : 1 Km	Ouest du Sud-Est
PARKING PAS. CAR	ZONES	ÉTAGE	CUISINE
: 1	<ul style="list-style-type: none"> stockage Gymnasio 	<ul style="list-style-type: none"> Tuiles Stone 	<ul style="list-style-type: none"> Cuisine Cuisine équipée
JARD RIVIÈRE ET TERRASSES N	EXTRA		
<ul style="list-style-type: none"> Terrasse couverte Terrasse ouverte Paysage murs en pierre barbecue / grill Jard RIVER n privée Jard RIVER Communauté 	<ul style="list-style-type: none"> Intégré Porte de sécurité Double vitrage Elevator 		

"Experience our experience - Because you deserve the best"