



**In Sun  
Properties Spain**  
since 1999

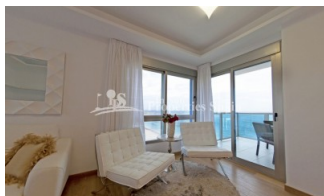
REF: # 5949

COSTA MURCIA (MAR MENOR)



#### INFO

<b>PRIX:</b>	364.000 €
<b>Type de propriété:</b>	Maison mitoyenne
<b>EMPLACEMENT:</b>	Costa Murcia (Mar Menor)
<b>CHAMBRES À COUCHER:</b>	4
<b>BA ENFANTS:</b>	3
<b>BUILT:</b>	155 (m2)
<b>PAS:</b>	-
<b>TERRASSE:</b>	-
<b>A ENFANTS:</b>	
<b>DE PLANTE:</b>	4
<b>MESSAGE</b>	-



#### DESCRIPTION

Located FIRST LINE on the coast of LA MANGA DEL MAR MENOR this is a SPECTACULAR 4 bedroom, 3 bathroom 155 m2 KEY READY townhouse on the 4th floor south facing. It is situated in a unique and exclusive area, between two seas: the Mar Menor and the Mediterranean Sea. It has four towers with ten floors each. Direct access to the beach, three amazing swimming pools and communal areas are inside the residential. Its design has been inspired by the sea, well represented in the facade (white and blue) with a modern design. Views from the highest terraces are spectacular! It is about 30 minutes by car from Cartagena, the main city of the region and next to a gorgeous golf course. The area has all kind of services such as bars, restaurants, supermarkets, shops, medical centers, dentists, pharmacies, golf courses, marinas, nautical sports and multiple leisure and free time options. La Manga del Mar Menor is a natural strip of land surrounded by two seas, the Mar Menor and the Mediterranean Sea. It's one of the most exotic areas in Spain. It's a perfect place to enjoy to the fullest of the sea, above all in the spring time and the summer too, during the high season and there are a lot of nautical sports. La Manga is the symbol of the Mar Menor, for its curious orography of the terrain, it not only allows you to enjoy your house from the front line of the beach, but also to enjoy the unique sensation to live in between 2 seas from where you can enjoy both the sunrise and the sunset!!

STYLE	VIEW	DISTANCE :	POSITION
<ul style="list-style-type: none"> <li>moderne</li> <li>contemporain</li> <li>Méditerranée</li> </ul>	<ul style="list-style-type: none"> <li>Panoramico</li> <li>Ocean</li> </ul>	<div>Beach : 200 m</div> <div>aéroport: 50 Km</div> <div>: 1 Km</div>	<div>Sur</div>
MEUBLÉ	PARKING PAS. CAR	ZONES	ÉTAGE
<ul style="list-style-type: none"> <li>meublé</li> </ul>	<div>: 1</div>	<ul style="list-style-type: none"> <li>stockage</li> <li>Ou chambre Baignade</li> </ul>	<ul style="list-style-type: none"> <li>Tuiles</li> <li>Stone</li> </ul>
CUISINE	JARD RIVIÈRE ET TERRASSES N	EXTRA	
<ul style="list-style-type: none"> <li>Cuisine</li> <li>Cuisine équipée</li> <li>Granit</li> </ul>	<ul style="list-style-type: none"> <li>Terrasse couverte</li> <li>Terrasse ouverte</li> <li>Paysage</li> <li>Jard RIVER Communauté</li> </ul>	<ul style="list-style-type: none"> <li>Intégré</li> <li>Porte de sécurité</li> <li>Double vitrage</li> <li>Elevator</li> </ul>	

*"Experience our experience - Because you deserve the best"*