



REF: # 5966

QUESADA-ROJALES (BENIJOFAR)



INFO

PRIX: 324.900 €

Type de propriété: Villa

EMPLACEMENT: Quesada-Rojales
(Benijofar)

CHAMBRES À COUCHER: 3

BA ENFANTS: 4

BUILT: 121 (m2)

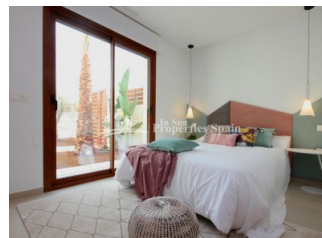
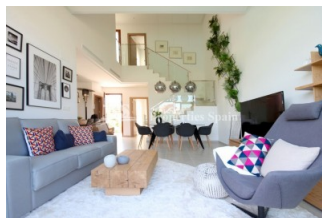
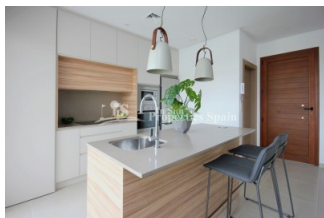
PAS: 227 (m2)

TERRASSE: 50 (m2)

A ENFANTS:

DE PLANTE: -

MESSAGE -



DESCRIPTION

Villas Biseri are located just outside the main street of Benijofar. This new Model (Perla) is a 121m² villa on a private development with off road parking for each property but allowing for a large landscaped garden, 227m² plot with a private pool and 50m² terrace area . Not only is it a stunning property, it is also a very practical one with large living room, 3 bedrooms, the master bedroom is on the ground floor with ensuite and walk-in wardrobe, 2 bathrooms (with shower screens) plus guest toilet, all making the perfect resting place for any family. This charming property can also enjoy a large roof top solarium of well over 35m² making it one of the focal points of the house to take in the breathtaking surrounding scenery and orange grove views. The uniqueness of Biseri is that they encapsulate all the styles that you would expect from a Mediterranean villa in the heart of the Costa Blanca. Many of its features, although traditional, are made with the very latest in materials and energy saving/ sustainable features and materials. The town and amenities are a short walk away and include a number of tapas bars, restaurants, banks, pharmacy, medical centre, town hall, school, etc... making it one of the perfect places to find a new home on Spain's Costa Blanca. Its privileged settings allow it to have breathtaking lifetime views of the Sierra de Callosa Mountains and the vast green orange tree groves of the Vega Baja of the Costa Blanca. Benijofar is just a 10 minute drive from the long, white sandy beaches of Guardamar and a 35 minute drive to Alicante airport with regular flights all over Europe.

STYLE	VIEW	DISTANCE :	POSITION
<ul style="list-style-type: none"> moderne contemporain 	<ul style="list-style-type: none"> Panoramico Une vue sur la montagne 	<div>Beach : 8 Km</div> <div>aéroport: 40 Km</div> <div>: 1 Km</div>	<div>Ouest du Sud-Est</div>
MEUBLÉ	PARKING PAS. CAR	ZONES	ÉTAGE
<ul style="list-style-type: none"> Vide 	<div>: 1</div>	<ul style="list-style-type: none"> stockage Ou chambre Baignade 	<ul style="list-style-type: none"> Tuiles
CUISINE	JARD RIVIÈRE ET TERRASSES N	EXTRA	
<ul style="list-style-type: none"> Cuisine Cuisine équipée Granit 	<ul style="list-style-type: none"> Terrasse couverte Terrasse ouverte Paysage murs en pierre Jard RIVER n privée 	<ul style="list-style-type: none"> Intégré Porte de sécurité Double vitrage 	

"Experience our experience - Because you deserve the best"