



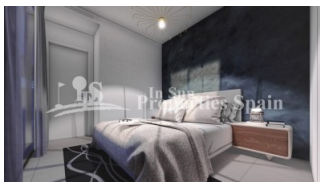
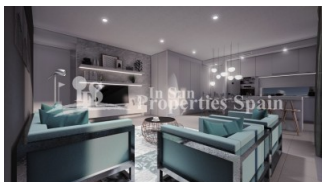
REF: # 6378

ORIHUELA COSTA (SAN PEDRO DEL PINTAR)



#### INFO

<b>PRIX:</b>	319.950 €
<b>Type de propriété:</b>	Villa
<b>EMPLACEMENT:</b>	Orihuela Costa (San Pedro del Pintar)
<b>CHAMBRES À COUCHER:</b>	3
<b>BA ENFANTS:</b>	2
<b>BUILT:</b>	107 (m2)
<b>PAS:</b>	250 (m2)
<b>TERRASSE:</b>	100 (m2)
<b>A ENFANTS:</b>	
<b>DE PLANTE:</b>	-
<b>MESSAGE</b>	-



#### DESCRIPTION

Located in the coastal town of SAN PEDRO DEL PINATAR you will find this last remaining stunning signature one level spacious detached villa on a 250m2 CORNER PLOT with 3 bedrooms in a very central location. The 107m2 villa offers an impressive 'open plan' living space with high ceilings, finished with top quality floor tiles and two wide sliding glass doors leading to the outside terraced area. The front door opens into the large open plan living area with dining area and to the side the kitchen – perfect for those “tapas” moments throughout the day. Enjoy the natural sun light with the oversized front sliding doors allowing masses of light inside. To the rear of the kitchen is a family bathroom with basin, toilet and shower with three over sized bedrooms all having fitted wardrobes – the master bedroom suite offers an en-suite bathroom. Outside the villa you find a large tiled area with private 6x3m swimming pool and off road parking. Steps to the side of the property give you access to the large 100m2 rooftop solarium with a storage room located to the rear. This is Built to order taking 6 – 8 months from signing of contract, adaptations are available prior to the build. In a privileged locations just a 4 minute drive from El Mojon Beach or a leisurely 20 minute stroll, 600m to the supermarket, 450m to the medical centre, 10 minutes walk from Las Salinas, a coastal reserve with salt flats & sand dunes, the same distance to the Botanical Gardens and only 15minutes from the Health Club.

STYLE	VIEW	DISTANCE :	POSITION
<ul style="list-style-type: none"> <li>moderne</li> <li>contemporain</li> </ul>	<ul style="list-style-type: none"> <li>Panoramico</li> </ul>	Beach : 2 Km aéroport: 20 Km : 1 Km	Ouest du Sud-Est
MEUBLÉ	PARKING PAS. CAR	ZONES	ÉTAGE
<ul style="list-style-type: none"> <li>Vide</li> </ul>	: 1	<ul style="list-style-type: none"> <li>stockage</li> </ul>	<ul style="list-style-type: none"> <li>Tuiles</li> <li>Stone</li> </ul>
CUISINE	JARD RIVIÈRE ET TERRASSES N	EXTRA	
<ul style="list-style-type: none"> <li>Cuisine</li> <li>Cuisine équipée</li> </ul>	<ul style="list-style-type: none"> <li>Terrasse couverte</li> <li>Terrasse ouverte</li> <li>Jard RIVER n privée</li> </ul>	<ul style="list-style-type: none"> <li>Intégré</li> <li>Porte de sécurité</li> <li>Double vitrage</li> <li>Stockage</li> </ul>	

*"Experience our experience - Because you deserve the best"*