



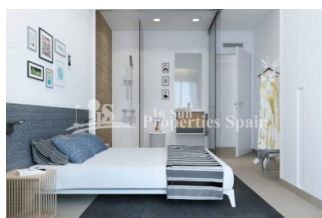
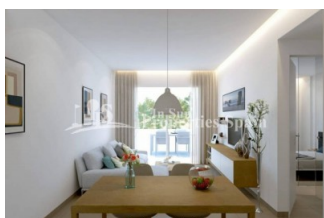
REF: # 6644

ORIHUELA COSTA (PILAR DE LA HORADADA)



INFO

| | |
|----------------------------|---------------------------------------|
| PRIX: | 141.000 € |
| Type de propriété: | Appartement |
| EMPLACEMENT: | Orihuela Costa (Pilar de la Horadada) |
| CHAMBRES À COUCHER: | 2 |
| BA ENFANTS: | 2 |
| BUILT: | 59 (m2) |
| PAS: | - |
| TERRASSE: | 54 (m2) |
| A ENFANTS: | |
| DE PLANTE: | 1 |
| MESSAGE | - |



DESCRIPTION

A new residential development well placed within the Spanish town of PILAR DE LA HORADADA. The complex offers a total of 36 properties from which you can choose ground floor with private garden (from 131,000€) or upstairs with solarium (from 141,000€). The residential has numbered parking spaces available to anyone who requests it, as well as swimming pool and community green areas. The Apartments boast an open plan living space with 2 bedrooms and 2 bathrooms. There is pre-installation of air conditioning and the kitchen furniture is of high quality with quartz powder, Compac, Silestone or similar countertop and a sink with a white fiber core or similar. The gardens will be finished by means of a layer of vegetal earth, facilitating to the client his maintenance and freedom in the design and aesthetic process of the garden. The internal urbanisation offers a nice community feel with swimming pool different common areas and parking. The common areas are equipped with lighting for energy-saving and / or LED-type lamps, with green areas and children's area. Community green areas are complete with grass plantation, trees and native plantation, designed by specialist in gardening, with systems of automatic irrigations by sprinklers and drip. The Pool area with access control and night lighting with an adult and child pool, integrated Jacuzzi and showers, hammocks and beach area to enjoy along with chill out zone equipped with sail-type parasol. Delivery 3rd Qtr of 2020

| STYLE | DISTANCE : | POSITION | MEUBLÉ |
|--|--|---|--|
| <ul style="list-style-type: none"> moderne contemporain | Beach : 3 Km aéroport: 40 Km : 500 m | Ouest du Sud-Est | <ul style="list-style-type: none"> Vide |
| PARKING PAS. CAR | ZONES | ÉTAGE | CUISINE |
| : 1 | <ul style="list-style-type: none"> stockage | <ul style="list-style-type: none"> Tuiles Stone | <ul style="list-style-type: none"> Cuisine Cuisine équipée |
| JARD RIVIÈRE ET TERRASSES N | EXTRA | | |
| <ul style="list-style-type: none"> Terrasse couverte Terrasse ouverte arbres fruitiers Palm Paysage Jard RIVER n privée Jard RIVER Communauté | <ul style="list-style-type: none"> Cuve extérieure Porte de sécurité Double vitrage Stockage | | |

"Experience our experience - Because you deserve the best"