



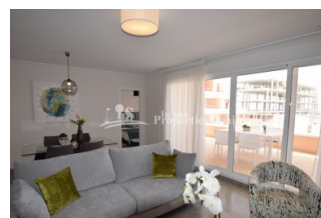
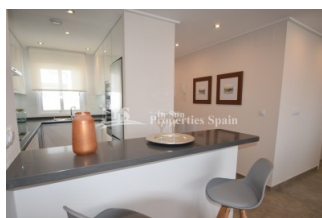
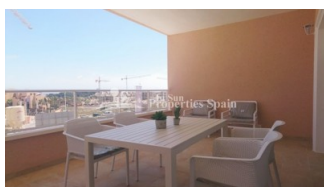
REF: # 6720

ORIHUELA COSTA (TORRE DE LA HORADADA)



INFO

PRIX:	249.900 €
Type de propriété:	Appartement
EMPLACEMENT:	Orihuela Costa (Torre de la Horadada)
CHAMBRES À COUCHER:	2
BA ENFANTS:	2
BUILT:	88 (m2)
PAS:	50 (m2)
TERRASSE:	-
A ENFANTS:	
DE PLANTE:	-
MESSAGE	-



DESCRIPTION

2 bed, 2 bath Apartments in this great new build development which is located in TORRE DE LA HORADADA, at the lovely HIGUERICAS BEACH. All the properties will have large terraces where you can enjoy the sun and unbeatable views that allow all lovers of the Mediterranean aroma the possibility of finding the perfect place to enjoy this paradise! There will be 18 apartments and 6 exclusive penthouses of 2 or 3 bedrooms and 2 bathrooms. The 2 bed apartments are ground floor apartments and have a garden of 50 m2. The stunning communal areas boast beautiful green areas with swimming pool. Underground parking space inclusive. 2 bed, 2 bath, from 249.900€ (and 264.900€). The area is also known to have one of the healthiest climates in the world. Lots of services closeby, such as supermarkets, restaurants, shops, pharmacy, health centre and the lovely Spanish towns of TORRE and PILAR DE LA HORADADA and the beautiful sandy beaches of the area as well as the Orihuela Costa ones, where you will also find other amenities, such as the famous shopping center ZENIA BOULEVARD. Also the most beautiful golf courses in the region are nearby. Both Murcia/Corvera Airport and Alicante/El Altet International Airport are only 40 minutes away. *KEY Ready in December 2023!!

STYLE	VIEW	CLIMATISATION	DISTANCE :
<ul style="list-style-type: none">moderneMéditerranée	<ul style="list-style-type: none">Panoramico	<ul style="list-style-type: none">Central	Beach : 3 Km aéroport: 50 Km : 500 m
POSITION	MEUBLÉ	PARKING PAS. CAR	ZONES
Ouest du Sud-Est	<ul style="list-style-type: none">Vide	: 1	<ul style="list-style-type: none">Ou chambre BAINADE
ÉTAGE	CUISINE	JARD RIVIÈRE ET TERRASSES N	CHAUFFAGE
<ul style="list-style-type: none">TuilesStone	<ul style="list-style-type: none">CuisineCuisine équipéeGranit	<ul style="list-style-type: none">Terrasse ouvertePlaygroundPaysagemurs en pierreJard RIVER n privéeJard RIVER Communauté	<ul style="list-style-type: none">Chauffage buf ENFANTS cheminée
EXTRA			
<ul style="list-style-type: none">Cuve extérieureIntégréPorte de sécuritéDouble vitrageElevator			

"Experience our experience - Because you deserve the best"