



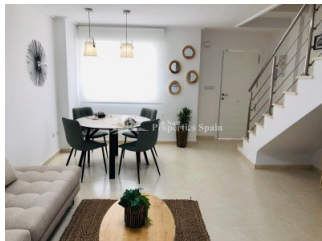
REF: # 6930

TORREVIEJA (LOS BALCONES)



INFO

PRIX:	169.000 €
Type de propriété:	Maison mitoyenne
EMPLACEMENT:	Torrevieja (Los balcones)
CHAMBRES À COUCHER:	3
BA ENFANTS:	2
BUILT:	74 (m2)
PAS:	120 (m2)
TERRASSE:	48 (m2)
A ENFANTS:	
DE PLANTE:	-
MESSAGE	-



DESCRIPTION

Residential "Los Altos de la Laguna", is located in LOS BALCONES, TORREVIEJA, an area of villas, residential and parks, 5 minutes walk from the University Hospital of Torrevieja, Hotel Doña Monse, Parque de los Balcones, Cafes, pharmacies and supermarkets. The Residential consists of 72 Duplexes, 17 with 3 bedrooms, 2 bathrooms and 55 with 3 bedrooms and 3 bathrooms, both with 2 small terraces, patio, independent kitchen, solarium and garage space. The common areas have landscaped areas and a 193m² pool with a stainless steel waterfall and palm trees. Available are the TYPE A duplex houses with panoramic views of the sea, the salt flats and the Rosa de Torrevieja lagoon from its solarium. The classic style homes are delivered with the following qualities; a fully furnished kitchen with high and low cabinets, as well as an electric boiler. All the taps are included, which guarantees low consumption and porcelain toilets. Telephone and telecommunications sockets. Pre-installation of air conditioning through ducts in living room and bedroom. Depending on the orientation of the house, it has a private garage space or an assigned parking space at one of the entrances to the Residential. These duplexes have been separated with imitation wood aluminum slats as well as their blinds. Smooth paint throughout the house, acoustic thermal insulation with 8 cm thick polyurethane spray. Exterior finishes with stucco and porcelain tiles, it also has a planter in a solarium. The house has a total area of 134.23m², a build of 74.79m², a solarium of 43.79m², a patio of 3.55m², parking of 12 m²

STYLE	VIEW	DISTANCE :	POSITION
<ul style="list-style-type: none"> moderne contemporain 	<ul style="list-style-type: none"> Panoramico 	Beach : 3 Km aéroport: 50 Km : 3 Km	Ouest du Sud-Est
PARKING PAS. CAR	ÉTAGE	CUISINE	JARD RIVIÈRE ET TERRASSES N
: 1	<ul style="list-style-type: none"> Tuiles Stone 	<ul style="list-style-type: none"> Cuisine fermée Cuisine équipée 	<ul style="list-style-type: none"> Terrasse ouverte Paysage murs en pierre Jard RIVER n privée Jard RIVER Communauté
EXTRA			
<ul style="list-style-type: none"> Intégré 			

"Experience our experience - Because you deserve the best"