



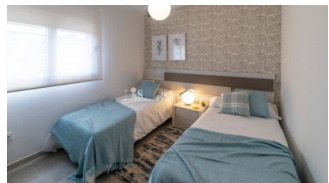
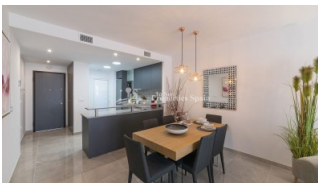
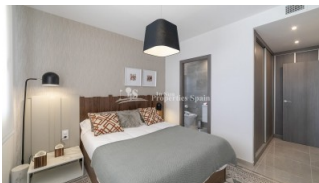
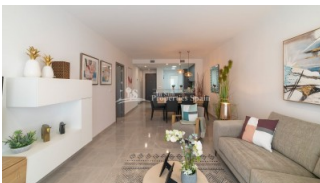
REF: # 8918

ORIHUELA COSTA (VILLAMARTIN LOS DOLSES)



INFO

PRIX:	210.000 €
Type de propriété:	Appartement
EMPLACEMENT:	Orihuela Costa (Villamartin Los Dolés)
CHAMBRES À COUCHER:	3
BA ENFANTS:	2
BUILT:	101 (m2)
PAS:	-
TERRASSE:	22 (m2)
A ENFANTS:	
DE PLANTE:	-
MESSAGE	-



DESCRIPTION

KEY READY apartments available at this exclusive development in LOS DOLSES - VILLAMARTIN area. Modern 2 and 3 bedroom apartments with 1 or 2 bathrooms boast cubic-shaped terraces to give you extra privacy from your neighbours. Ground floor homes feature a sheltered patio terrace and an open-air garden to sunbath. Those on the first, second and third floors enjoy views with a wider projection towards the coast. Top floor residents not only have a spacious terrace, but also a rooftop terrace for an outdoor lounge, scanning Orihuela Costa's skyline. Prices start from 200.000 € for a 3 bedroom 2 bathroom apartment on the 1st floor with 22m2 private terrace. Each apartment comes with air conditioning pre-installed as well as underfloor heating in the bathroom. You'll also have an exterior storage room to store your bulky belongings for a tidier home. With your own bike station and car park you come and go with ease and security. Large cubic terraces dominate this complex, with easy access to the nearby beach. Its modern apartments encircle a large swimming pool for adults, adjoining the kids pool. You can also take a refreshing dip in one of the two whirlpools, each with capacity for 4-6 people. Surrounding the decked perimeter of the pools are green lawns and gardens for sunbathing. Don't miss our special promotion. Buy now your new Spanish property fully equipped! Actual range full equipment included in the price until 30/06/2021. Also a great facility if you are looking to rent out a property as the developer has an exclusive rentals department to assist in finding rentals for your property but also looks after the tourist licence application, cleaning and laundry.

STYLE	VIEW	CLIMATISATION	DISTANCE :
<ul style="list-style-type: none"> moderne contemporain 	<ul style="list-style-type: none"> Panoramico 	<ul style="list-style-type: none"> Central 	Beach : 2 Km aéroport: 40 Km : 1 Km
POSITION	MEUBLÉ	PARKING PAS. CAR	FRAIS
Ouest du Sud-Est	<ul style="list-style-type: none"> Vide 	: 1	Communauté : 1.200 € I.B.I : 300 €
CUISINE	JARD RIVIÈRE ET TERRASSES N	CHAUFFAGE	EXTRA
<ul style="list-style-type: none"> Cuisine 	<ul style="list-style-type: none"> Terrasse ouverte Palm Playground Jard RIVER Communauté 	<ul style="list-style-type: none"> Chauffage buf ENFANTS cheminée 	<ul style="list-style-type: none"> Cuve extérieure Intégré

"Experience our experience - Because you deserve the best"