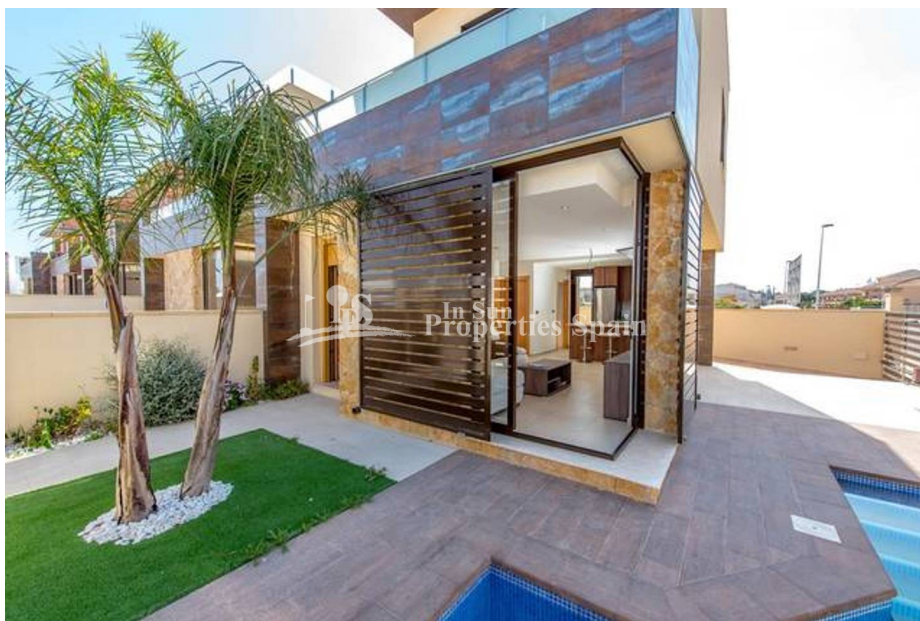




REF: # 3792

()



#### INFO

**PRIX:** 181.900 €

**Type de propriété:** Villa (Semi detached)

**Emplacement:** ()

**Chambres à coucher:** 3

**Ba ENFANTS:** 2

**Built:** 102 (m2)

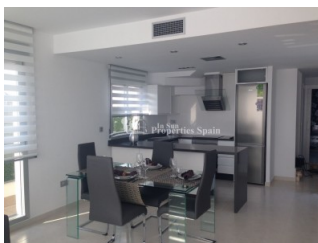
**pas:** 129 (m2)

**Terrasse:** 36 (m2)

**A ENFANTS:** -

**de plante:** -

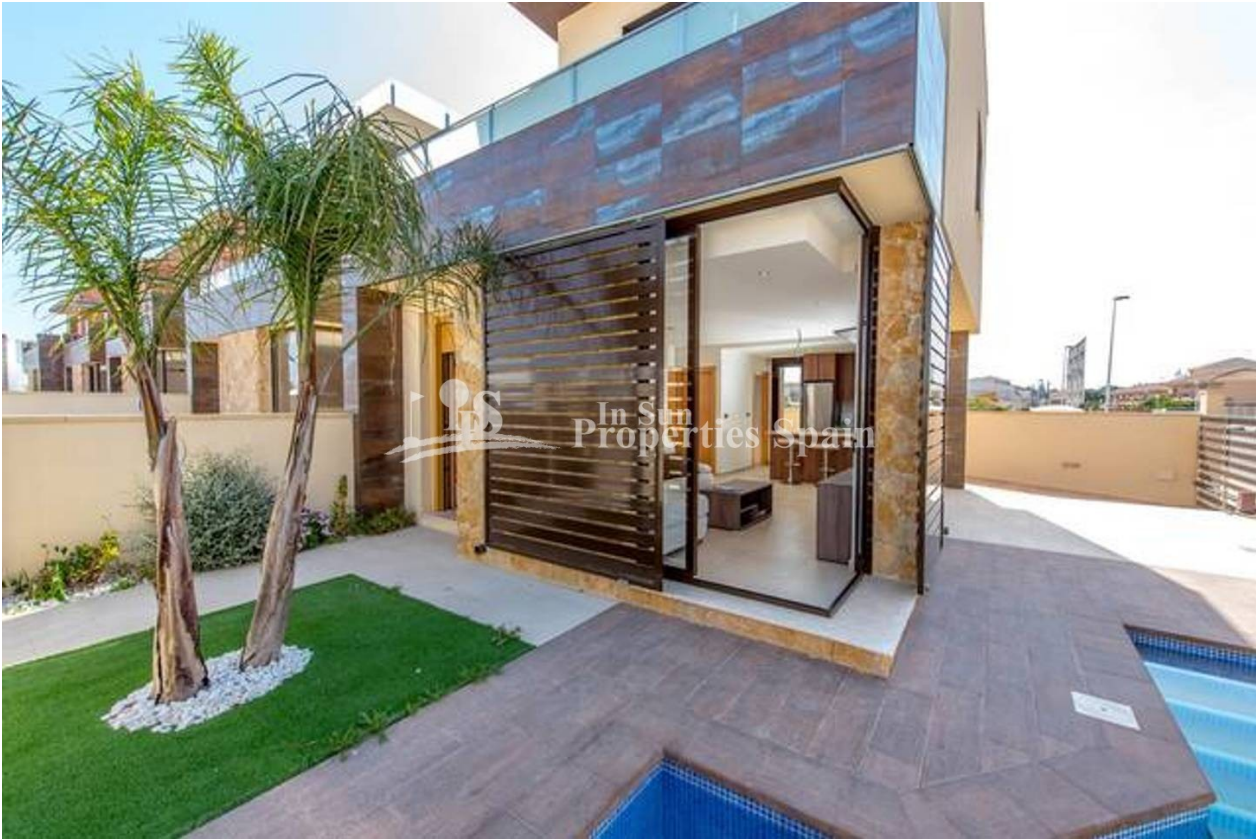
**MESSAGE** -



#### DESCRIPTION

This NEW modern design 3 bedroom, 2 bathroom Semi-Detached Villa with private pool on two floors is located close to the Lo Pagan beaches the most famous mud baths and to the town of San Pedro del Pinatar. These beautiful designed 102 m2 house will be constructed with top quality materials on a 129 m2 plot with private pool. Ground floor with open modern integrated kitchen, dining /living area, 1 double bedroom 1 bedrooms and sunny terraces with pool views, first floor with 2 bedrooms with fitted wardrobe, 1 bathrooms and terrace. As well there is a lovely roof terrace "option" of 36m2 available to enjoy the far reaching views to the nature park. Modern style finishes and built in the best quality materials. Walking distance to restaurants, bars, supermarket and all amenities . This area has a Thalassotherapy SPA Hotel and also offers a variety of sports activities, including seasonal water sports, you can choose from 5 Championship golf courses all within 10 minutes drive — the Pinatar arena is 5 minutes walk away with football, gym, cricket and tennis courts.

VIEW	CLIMATISATION	DISTANCE :	POSITION
<ul style="list-style-type: none"><li>Panoramico</li></ul>	<ul style="list-style-type: none"><li>Central</li></ul>	Beach : 500 m aéroport: 20 Km : 500 m	Sud-Ouest
MEUBLÉ	PARKING PAS. CAR	ZONES	ÉTAGE
<ul style="list-style-type: none"><li>Vide</li></ul>	: 1	<ul style="list-style-type: none"><li>Ou chambre BAIGNADE</li></ul>	<ul style="list-style-type: none"><li>Tuiles</li><li>Stone</li></ul>
CUISINE	JARD RIVIÈRE ET TERRASSES N	EXTRA	
<ul style="list-style-type: none"><li>Cuisine</li><li>Cuisine équipée</li><li>Granit</li></ul>	<ul style="list-style-type: none"><li>Terrasse ouverte</li><li>Feux extérieurs</li><li>irrigation automatique</li><li>Paysage</li><li>murs en pierre</li><li>Jard RIVER n privée</li></ul>	<ul style="list-style-type: none"><li>Intégré</li><li>Double vitrage</li><li>Stockage</li></ul>	











































*"Experience our experience - Because you deserve the best"*