



REF: # 3871

()



INFO

PRIX: 279.000 €

Type de propriété: Villa (Semi detached)

Emplacement: ()

Chambres à coucher: 3

Ba ENFANTS: 3

Built: 128 (m2)

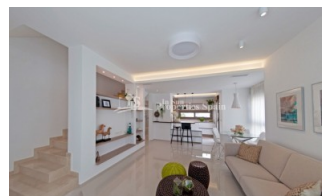
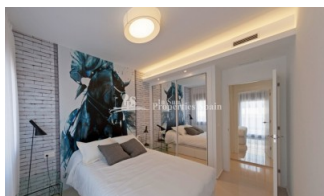
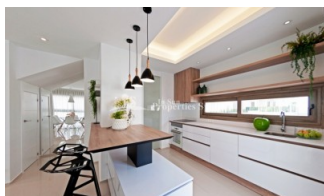
pas: -

Terrasse: 29 (m2)

A ENFANTS:

de plante: -

MESSAGE -



DESCRIPTION

Last available corner Townhouse Key Ready in APRIL 2018 at RESIDENCIAL ATEKA, DONA PEPA. These NEW modern, luxury south/west facing 3 bedroom, 3 bathroom Townhouses facing the community pool, located in a lovely gated community with private parking and 2 communal swimming pools near to the Golf course. 3 Bedroom, 3 Bathroom IVORY model Townhouses of 128m2, benefit from a 50m2 roof solarium and minimum 80m2 garden. Doña Pepa is a modern urbanisation belonging to Ciudad Quesada and has all the amenities which include supermarkets, bars, hotel and shops as well as a bank. Ciudad Quesada town centre is a ten minute walk from Doña Pepa. In Ciudad Quesada itself you will find international supermarkets, restaurants, banks, a medical centre as well as a water park. The property is ideally located if you are a golf enthusiast, with La Marquesa Golf Club just a five minute drive away. The nearest beaches are at Guardamar/Campomar and La Mata ten minutes drive away. Nearest Airports: San Javier (Murcia) - Approx 30 minute drive Alicante Airport - Approx 30 minute drive

STYLE	VIEW	CLIMATISATION	DISTANCE :
<ul style="list-style-type: none">moderne	<ul style="list-style-type: none">Panoramico	<ul style="list-style-type: none">Central	Beach : 8 Km aéroport: 40 Km : 1 Km
POSITION	MEUBLÉ	PARKING PAS. CAR	ÉTAGE
Sud-Ouest	<ul style="list-style-type: none">Vide	: 1	<ul style="list-style-type: none">TuilesStone
CUISINE	JARD RIVIÈRE ET TERRASSES N	CHAUFFAGE	EXTRA
<ul style="list-style-type: none">CuisineCuisine équipéeGranit	<ul style="list-style-type: none">Terrasse couverteTerrasse ouverteFeux extérieursirrigation automatiquePalmclôturesmurs en pierrehayonJard RIVER n privéeJard RIVER Communauté	<ul style="list-style-type: none">Chauffage buf ENFANTS cheminée	<ul style="list-style-type: none">IntégréDouble vitrage

















"Experience our experience - Because you deserve the best"