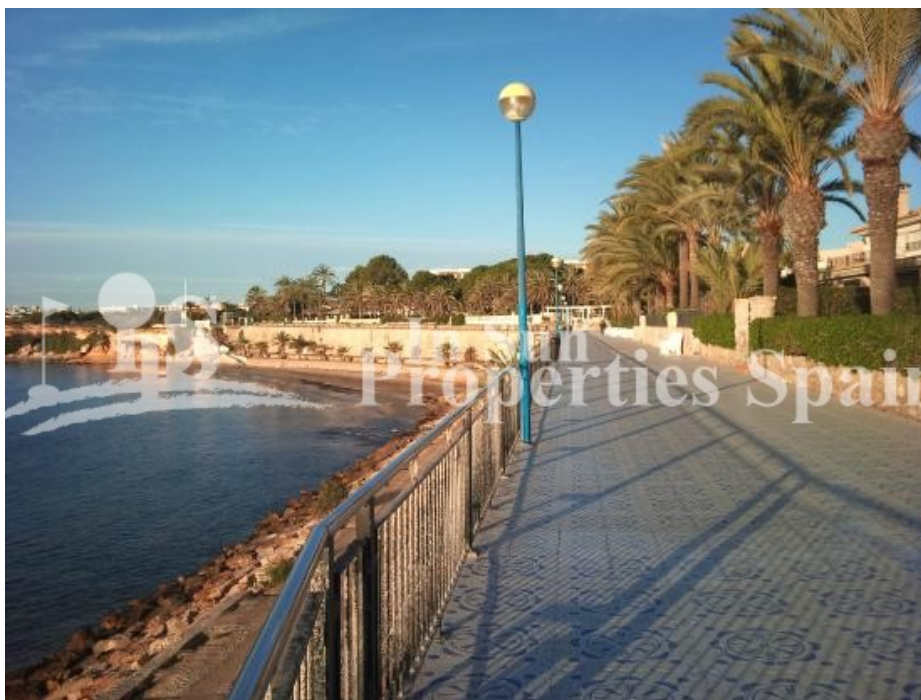




**In Sun
Properties Spain**
since 1999

REF: # 4407

()



INFO

PRIX: 215.910 €

Type de propriété: Bungalow

Emplacement: ()

Chambres à coucher: 3

Ba ENFANTS: 2

Built: 77 (m2)

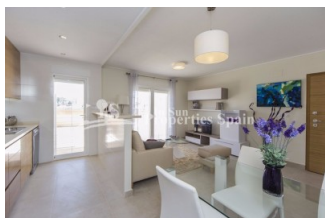
pas: -

Terrasse: 287 (m2)

A ENFANTS:

de plante: -

MESSAGE -



DESCRIPTION

Located in the privileged area of PUNTA PRIMA, 300 meters from the Punta Marina Shopping Center and 5 minutes from PUNTA PRIMA BEACH and Zenia Boulevard Shopping Center. With delivery in October 2019, this is the last remaining BUNGALOW at this development. Boasting 3 bedrooms, within the 77m2 built surface and located on the Ground floor bungalow with open plan living/dining room, fully equipped fitted kitchen, 2 bathrooms and generous 287m2 private garden, perfect for entertaining family and friends. The development is set within large communal green areas with swimming pool and Jacuzzi, one of them with indoor SPA pool (Jacuzzi, cervical jets, sauna, gym etc.) More than 5,000 m2 of green areas with swimming pools, Spa with Jacuzzi, sauna, Gym and children's areas, all this together makes this an Exclusive Residential not to be missed! The area is home to a number of championship Golf resorts including Campo de Golf Villamartin, Las Ramblas, Las Colinas Golf & Country Clun and Campoamor. Nearby Torrevieja is a city full of vibrant nightlife and a lovely port and promenade. Alicante and Murcia (RMU) airports are around 50 minutes from Punta Prima.

| | | | |
|---|---|--|---|
| STYLE <ul style="list-style-type: none">modernecontemporain | VIEW <ul style="list-style-type: none">Panoramico | CLIMATISATION <ul style="list-style-type: none">Central | DISTANCE : <div>Beach : 2 Km</div> <div>aéroport: 50 Km</div> <div>: 6 Km</div> |
| POSITION <div>Sud-Ouest</div> | MEUBLÉ <ul style="list-style-type: none">Vide | PARKING PAS. CAR <div>Garage no. Car : 1</div> <div>: 1</div> | ZONES <ul style="list-style-type: none">stockage |
| ÉTAGE <ul style="list-style-type: none">TuilesStone | CUISINE <ul style="list-style-type: none">CuisineCuisine équipéeGranit | JARD RIVIÈRE ET TERRASSES N <ul style="list-style-type: none">PaysageJard RIVER n privéeJard RIVER Communauté | CHAUFFAGE <ul style="list-style-type: none">Chauffage buf ENFANTS cheminée |
| EXTRA <ul style="list-style-type: none">Porte de sécurité | | | |





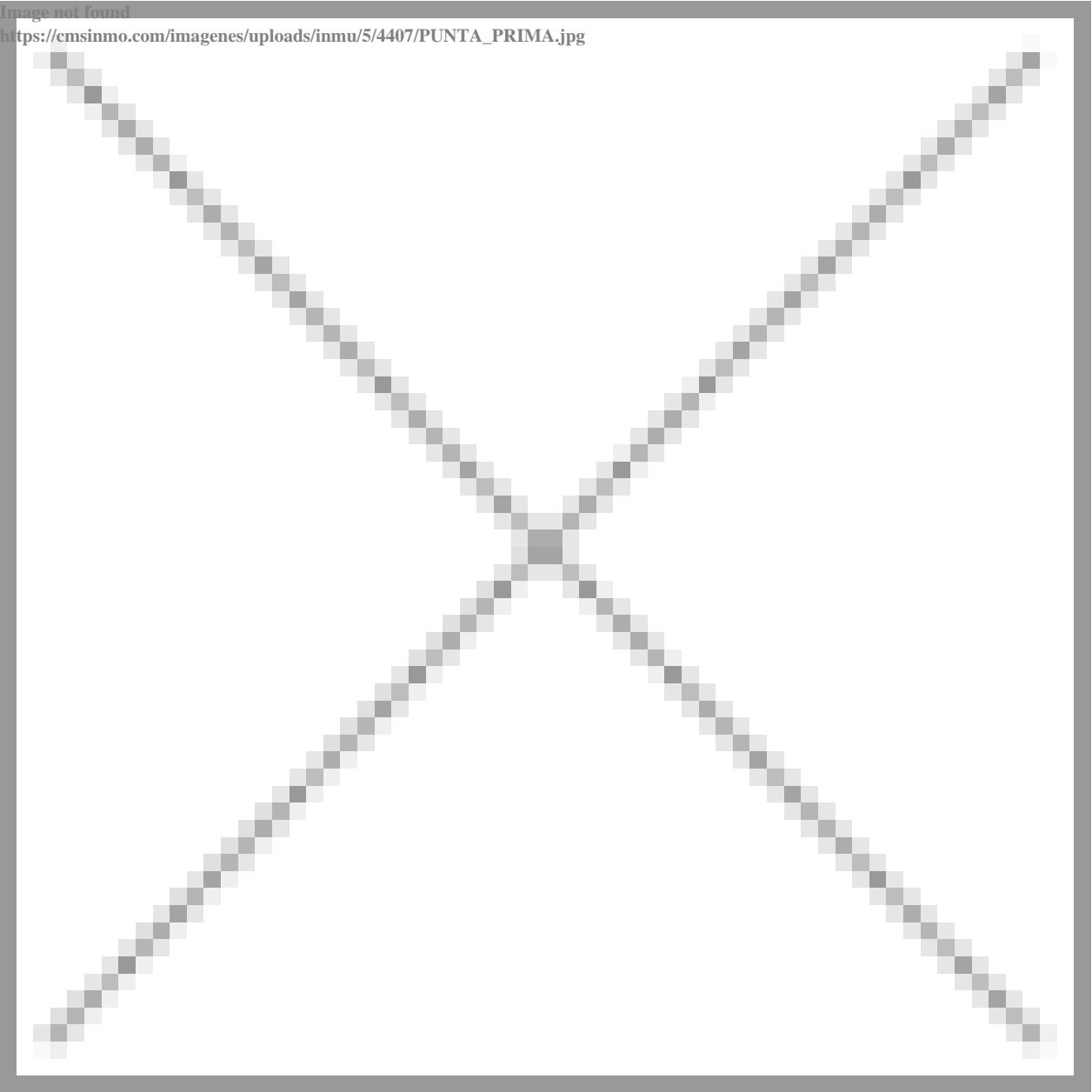






Image not found

https://cmsinmo.com/imagenes/uploads/inmu/5/4407/PUNTA_PRIMA.jpg





"Experience our experience - Because you deserve the best"