



**In Sun  
Properties Spain**  
since 1999

REF: # 4508

()



#### INFO

**PRIX:** 299.000 €

**Type de propriété:** Villa

**Emplacement:** ()

**Chambres à coucher:** 3

**Ba ENFANTS:** 3

**Built:** 127 (m2)

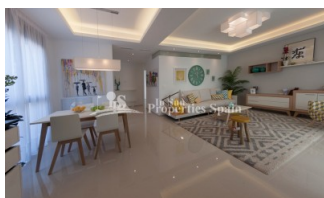
**pas:** 215 (m2)

**Terrasse:** 47 (m2)

**A ENFANTS:**

**de plante:** -

**MESSAGE** -



#### DESCRIPTION

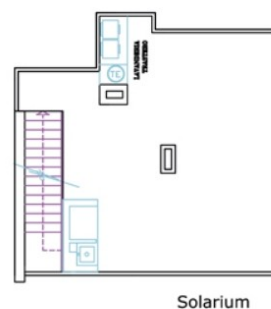
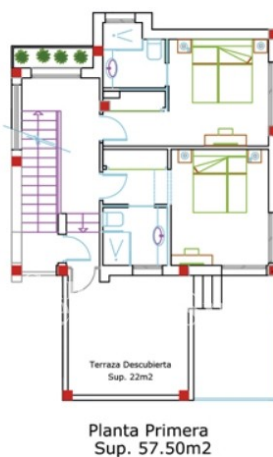
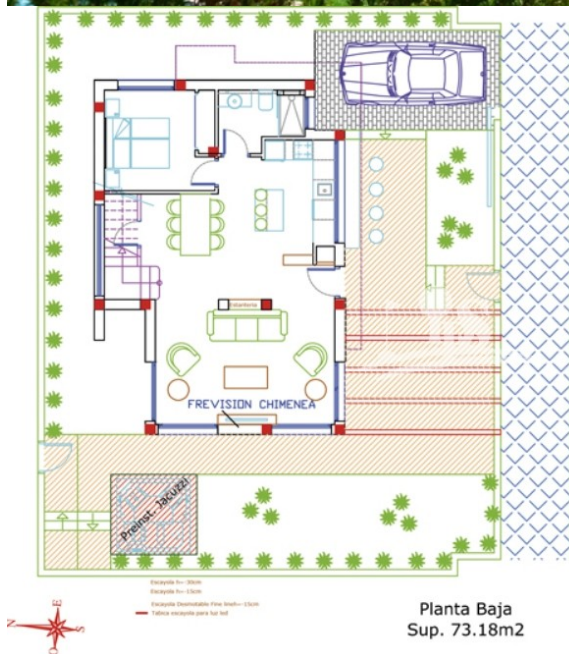
ENNATE VILLAS at Ennate Garden are situated in DONA PEPA. It's a luxury residential with bioclimatic houses enclosed. There is just one remaining. Model Villa LUNA. This is a 127m2 3 Bedroom, 3 Bathroom VILLA with 47m2 roof terrace on a 215m2 plot with private garden and swimming pool. The houses are constructed by excellent materials insulating from the high and low outdoor temperatures. It is located in Doña Pepa near to La Marquesa Golf Course and Guardamar beach. The area has all type of services and a great cultural offer. Doña Pepa is a modern urbanisation belonging to Ciudad Quesada and has all the amenities which include supermarkets, bars, hotel and shops as well as a bank. Ciudad Quesada town centre is a ten minute walk from Doña Pepa. In Ciudad Quesada itself you will find international supermarkets, restaurants, banks, a medical centre as well as a water park. The property is ideally located if you are a golf enthusiast, with La Marquesa Golf Club just a five minute drive away. The nearest beaches are at Guardamar/Campomar and La Mata ten minutes drive away. Nearest Airports: San Javier (Murcia) - Approx 30 minute drive Alicante Airport - Approx 30 minute drive

<b>STYLE</b> <ul style="list-style-type: none"><li>• moderne</li><li>• contemporain</li></ul>	<b>VIEW</b> <ul style="list-style-type: none"><li>• Panoramico</li></ul>	<b>DISTANCE :</b> <div>Beach : +10 Km</div> <div>aéroport: 30 Km</div> <div>: 2 Km</div>	<b>POSITION</b> <div>Ouest du Sud-Est</div>
<b>MEUBLÉ</b> <ul style="list-style-type: none"><li>• Vide</li></ul>	<b>PARKING PAS. CAR</b> <div>: 1</div>	<b>ÉTAGE</b> <ul style="list-style-type: none"><li>• Tuiles</li><li>• Stone</li></ul>	<b>CUISINE</b> <ul style="list-style-type: none"><li>• Cuisine</li><li>• Cuisine équipée</li><li>• Granit</li></ul>
<b>JARD RIVIÈRE ET TERRASSES N</b> <ul style="list-style-type: none"><li>• Terrasse ouverte</li><li>• Paysage</li><li>• Jard RIVER n privée</li></ul>	<b>EXTRA</b> <ul style="list-style-type: none"><li>• Intégré</li><li>• Porte de sécurité</li><li>• Double vitrage</li></ul>		









Artistic Image Free Of Contractual Nature











*"Experience our experience - Because you deserve the best"*