



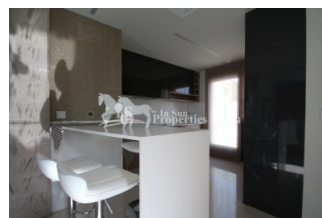
REF: # 4533

()



#### INFO

|                            |           |
|----------------------------|-----------|
| <b>PRIX:</b>               | 975.000 € |
| <b>Type de propriété:</b>  | Villa     |
| <b>Emplacement:</b>        | ()        |
| <b>Chambres à coucher:</b> | 4         |
| <b>Ba ENFANTS:</b>         | 3         |
| <b>Built:</b>              | 154 (m2)  |
| <b>pas:</b>                | 400 (m2)  |
| <b>Terrasse:</b>           | -         |
| <b>A ENFANTS:</b>          | -         |
| <b>de plante:</b>          | -         |
| <b>MESSAGE</b>             | -         |



#### DESCRIPTION

**\*\*SPECIAL OFFER - THE NEXT 15 PROPERTIES SOLD INCLUDE WHITE GOODS, AIR-CONDITIONING AND FURNITURE PACK (FURNITURE, LIGHTING, CURTAINS, HOUSEHOLD)\*\***In an unbeatable location just a few meters from the beach of PUNTA PRIMA, 2 independent DETACHED VILLAS with 4 bedrooms and 3 bathrooms on plots of 400m2, private 8X4 pool and 105m2 basement offering the potential to make these into 6 bedroom, 5 bathroom homes with 2 Kitchen and 2 living rooms. Finished to the highest standards. Punta Prima is a typical Spanish seaside tourist resort located on the southern Costa Blanca within 30 minutes of two international airports, Murcia and Alicante. The beaches are some of the cleanest around and have been awarded the blue flag status. Punta Prima is situated a ten minute drive just south of Torrevieja, and all of its amenities such as the shopping complex, Las Habaneras, Waterpark, Pacha nightclub, casino, ten pin bowling, marina, submarine, boat trips, and Playa Flamenca with its beautiful beaches. For those more energetic you can reach Torrevieja by foot, a mere thirty minute stroll along the coast or there is an hourly bus service to take you there. €975,000 - €1,000,000

|  |   |  |   |
|--|---|--|---|
| <b>STYLE</b> <ul style="list-style-type: none"><li>moderne</li><li>contemporain</li></ul>  | <b>VIEW</b> <ul style="list-style-type: none"><li>Panoramico</li></ul>                      | <b>DISTANCE :</b> <div>Beach : 200 m</div> <div>aéroport: 50 Km</div> <div>: 200 m</div> | <b>POSITION</b> <div>Ouest du Sud-Est</div>   |
| <b>MEUBLÉ</b> <ul style="list-style-type: none"><li>meublé</li></ul>   | <b>PARKING PAS. CAR</b> <div>: 1</div>  | <b>ÉTAGE</b> <ul style="list-style-type: none"><li>Tuiles</li><li>Stone</li></ul>        | <b>CUISINE</b> <ul style="list-style-type: none"><li>Cuisine</li><li>Cuisine équipée</li><li>Granit</li></ul> |
| <b>JARD RIVIÈRE ET TERRASSES N</b> <ul style="list-style-type: none"><li>Terrasse couverte</li><li>Terrasse ouverte</li><li>Paysage</li><li>murs en pierre</li><li>Jard RIVER n privée</li></ul> | <b>EXTRA</b> <ul style="list-style-type: none"><li>Intégré</li><li>Double vitrage</li></ul> |  |   |













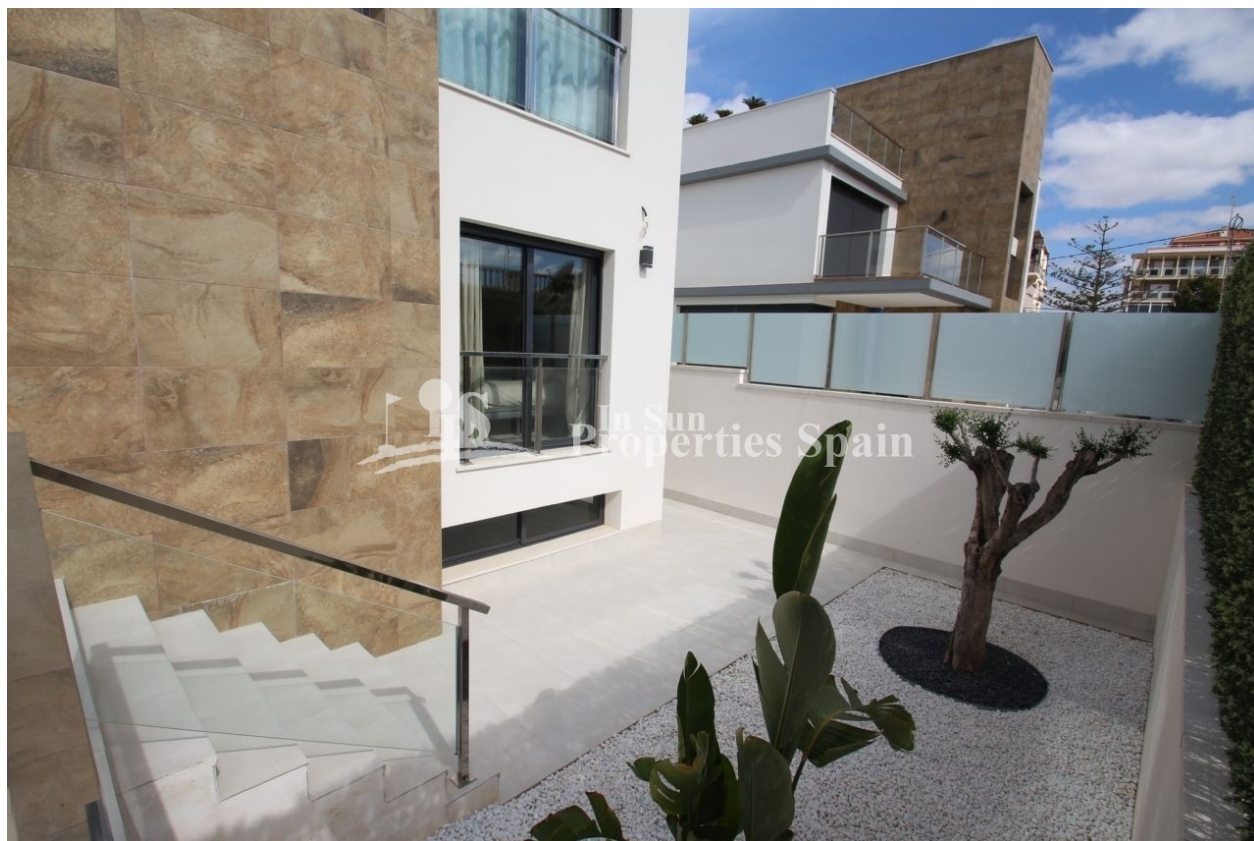


















*"Experience our experience - Because you deserve the best"*