



**In Sun  
Properties Spain**  
since 1999

REF: # 4550

()



#### INFO

**PRIX:** 380.000 €

**Type de propriété:** Villa

**Emplacement:** ()

**Chambres à coucher:** 3

**Ba ENFANTS:** 3

**Built:** 174 (m2)

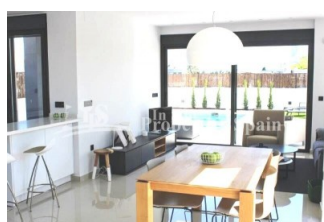
**pas:** 290 (m2)

**Terrasse:** 58 (m2)

**A ENFANTS:**

**de plante:** -

**MESSAGE** -



#### DESCRIPTION

Superb, modern 174m2 detached VILLA, located just 250m from the BEACH at EL PINET and only 1000m from the VILLAGE OF LA MARINA. There are ten Villas and two Models of Villa available with plots from 290m2 to 406m2. 3 Bedroom, 3 Bathroom Villas (Modelo Isla de Tabarca) of 174m2 on a 290m2 plot with private 6x3 swimming pool and 58m2 solarium with SEA VIEWS start from just €380,000 and include A/C and heating through ducts with 2 machines included, installation of underfloor heating in the bathrooms, appliances and automatic blinds. 4 Bedroom, 4 Bathroom (Modelo Playa del Tamarit) plus one guest toilet start from €529,000 with 8x3 swimming pool. In the south of the municipal district of Elche, on an impressive strip of dunes, you will find the beach known as El Pinet, with a vast pine forest that has a natural extension to the south of the coast of

Guardamar del Segura, and to the north, in the Nature Reserve of las Salinas of Santa Pola. A regular bus service runs between El Pinet and Elche. The closest airport is Alicante International and it is only a short 20 minute drive away. Other models available with 3bed, 3bath or 4bed, 3bath or 4bed, 4bath from €380,000 - €539,000. \*\*contact us for further information

<b>STYLE</b> <ul style="list-style-type: none"><li>• moderne</li><li>• contemporain</li><li>• Méditerranée</li></ul>	<b>VIEW</b> <ul style="list-style-type: none"><li>• Panoramico</li><li>• Ocean</li></ul>	<b>DISTANCE :</b> <div>Beach : 500 m</div> <div>aéroport: 20 Km</div> <div>: 1 Km</div>	<b>POSITION</b> <div>Ouest du Sud-Est</div>
<b>PARKING PAS. CAR</b> <div>: 1</div>	<b>ÉTAGE</b> <ul style="list-style-type: none"><li>• Tuiles</li><li>• Stone</li></ul>	<b>CUISINE</b> <ul style="list-style-type: none"><li>• Cuisine</li><li>• Cuisine équipée</li><li>• Granit</li></ul>	<b>JARD RIVIÈRE ET TERRASSES N</b> <ul style="list-style-type: none"><li>• Terrasse couverte</li><li>• Terrasse ouverte</li><li>• Paysage</li><li>• murs en pierre</li><li>• Jard RIVER n privée</li></ul>
<b>EXTRA</b> <ul style="list-style-type: none"><li>• Intégré</li><li>• Porte de sécurité</li><li>• Double vitrage</li></ul>			







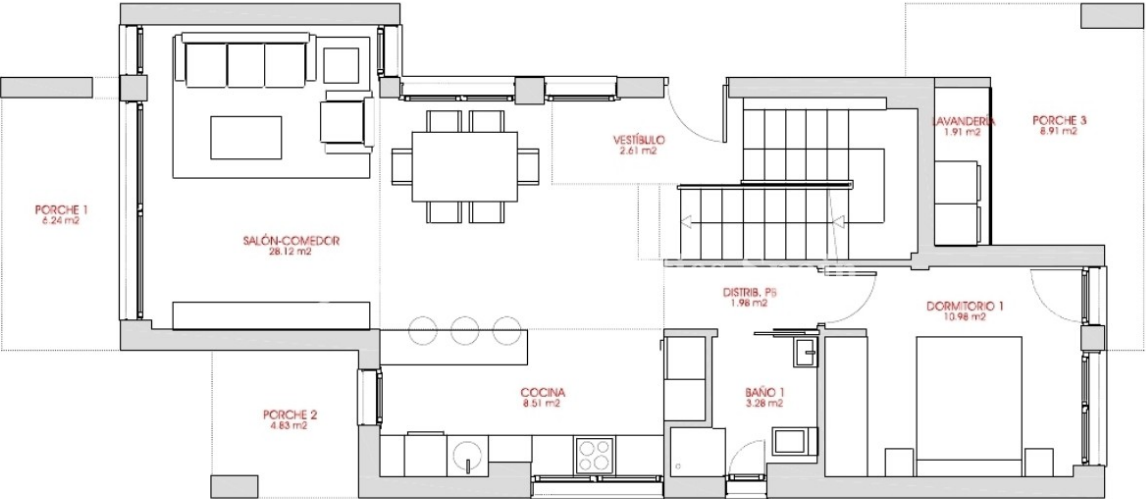




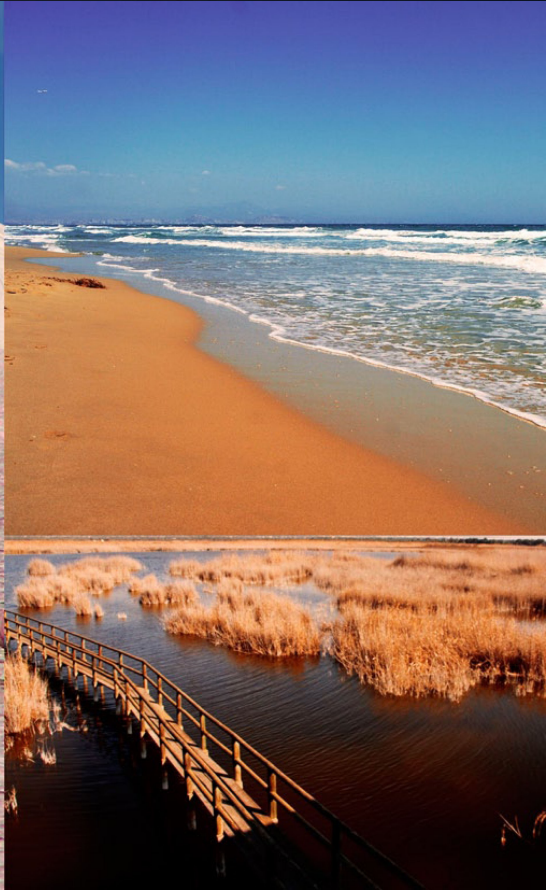




























*"Experience our experience - Because you deserve the best"*