



REF: # 5773

()



INFO

PRIX: 237.000 €

Type de propriété: Maison mitoyenne

Emplacement: ()

Chambres à coucher: 2

Ba ENFANTS: 3

Built: 96 (m2)

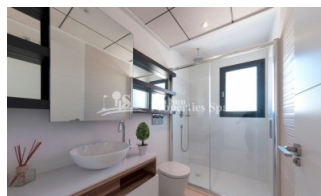
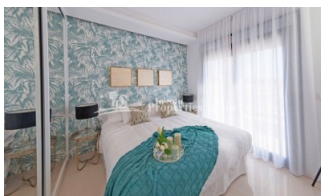
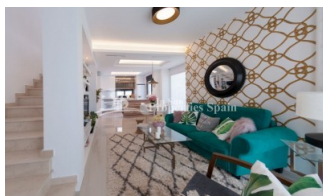
pas: -

Terrasse: 34 (m2)

A ENFANTS:

de plante: -

MESSAGE -



DESCRIPTION

KEY READY Allegra Residential in urbanisation DOÑA PEPA is a lovely complex where you can find different models of properties: apartments and townhouses. It's a gated residential, with beautiful green areas, communal swimming pools and parking, designed in Mediterranean style. These lovely 96m2 houses have a living-dining room, kitchen, 2 bedrooms, 3 bathrooms, minimum 4m2 terrace, minimum 90m2 private garden and minimum 30m2 roof terrace, utility room. Doña Pepa is an elegant urbanization with wide avenues, wonderful views to the Natural Park and the salt lakes with a wide range of leisure activities and all the necessary amenities without having to take a car. It is only 30 minutes away from international airports, 35 minutes from Alicante and 5 minutes from the most beautiful beaches of the Costa Blanca. It is an area with good annual temperatures and a great atmosphere. The area of Doña Pepa has a widely varied infrastructure offering a multitude of shops, supermarkets, restaurants, cafes, medical centers, pharmacies, golf courses, banks, a 4* Hotel with a Spa, a church, a social center, a cultural center, sports areas, an aquapark, a school, two natural parks, a religious center and high quality shopping complexes.

STYLE <ul style="list-style-type: none">• moderne• contemporain	VIEW <ul style="list-style-type: none">• Panoramico	DISTANCE : <div>Beach : 9 Km</div> <div>aéroport: 30 Km</div> <div>: 1 Km</div>	POSITION <div>Ouest du Sud-Est</div>
PARKING PAS. CAR <div>: 1</div>	ÉTAGE <ul style="list-style-type: none">• Tuiles• Stone	CUISINE <ul style="list-style-type: none">• Cuisine• Cuisine équipée	JARD RIVIÈRE ET TERRASSES N <ul style="list-style-type: none">• Terrasse couverte• Terrasse ouverte• Jard RIVER n privée• Jard RIVER Communauté
EXTRA <ul style="list-style-type: none">• Intégré• Porte de sécurité			













Allegra
RESIDENTIAL

Model: Samara Corner
Property: 99,6m²
Garden: 90-120m²
Roof-Terrace: 30m²
2 Bedrooms
2 Bathrooms



Imagen Artística carece de valor contractual/Artistic Image free of contractual nature







"Experience our experience - Because you deserve the best"