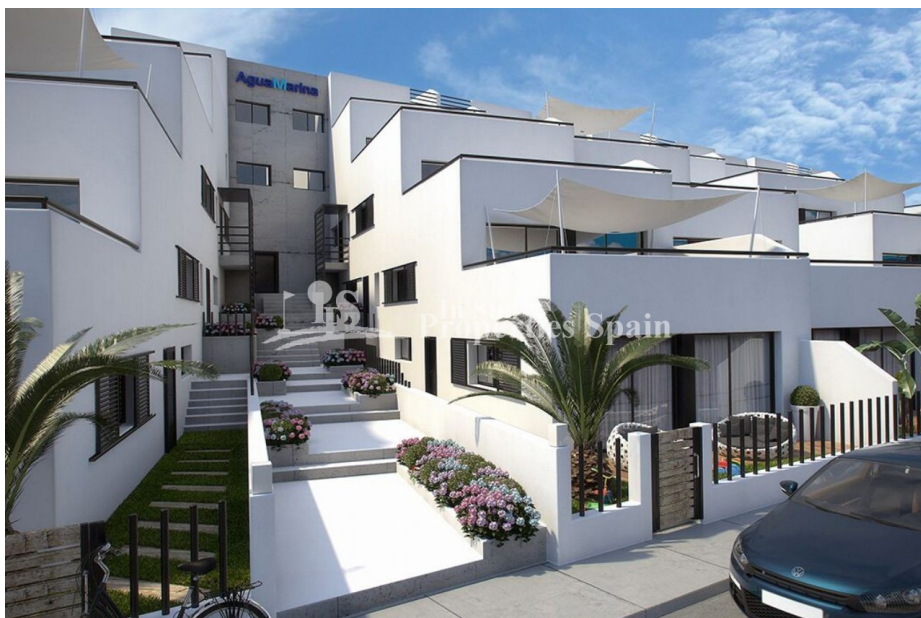




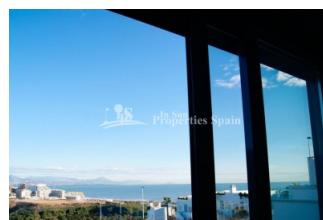
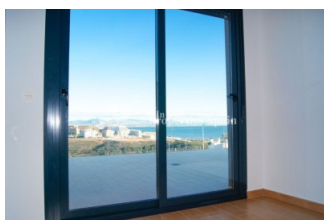
**In Sun  
Properties Spain**  
since 1999

REF: # 5893



#### INFO

<b>PRIX:</b>	189.000 €
<b>Type de propriété:</b>	Appartement
<b>Emplacement:</b>	
<b>Chambres à coucher:</b>	2
<b>Ba ENFANTS:</b>	1
<b>Built:</b>	106 (m2)
<b>pas:</b>	-
<b>Terrasse:</b>	-
<b>A ENFANTS:</b>	
<b>de plante:</b>	-
<b>MESSAGE</b>	-



#### DESCRIPTION

Residencial Agua Marina is a new Apartment development located in GRAN ALACANT, 1km from the BEACH! Modern and comfortable apartments with first quality construction and materials. Properties with 2 bedrooms, Large living room and integrated kitchen. Big terraces with SEA VIEW. Ground floor properties with garden. Pre-installation of air conditioning ducts throughout the house. It has spacious common areas formed by COVERED PARKING, community pools and an area with children's games. The water area and recreation area is composed of THREE SWIMMING POOLS, two in cascade and one for children. Within 1km you will find fine SANDY BEACHES like El Carabassí Beach that combine sand dunes and pine groves, with the possibility to do nautical sports in authorized spaces. It also has a large maritime promenade in Arenales del Sol, which becomes populated with walkers, cyclists and runners. Close to the Clot de Galvany, where you can discover many routes for getting to know different environments. There are various lookout points for everyone's enjoyment in Gran Alacant and El Faro or the small fishing town of Santa Pola, rich in artistic heritage. There are endless services in the area such as: Shopping centers, shops, leisure areas, sports centers, schools, medical services, pharmacies, banks etc. Less than 5 minutes walk to the beach. 10 minutes drive from the airport and less than 15 minutes drive to the city centers of Alicante and Elche.

<b>STYLE</b> <ul style="list-style-type: none"><li>moderne</li><li>contemporain</li></ul>	<b>VIEW</b> <ul style="list-style-type: none"><li>Panoramico</li><li>Ocean</li></ul>	<b>DISTANCE :</b> <div>Beach : 1 Km</div> <div>aéroport: 10 Km</div> <div>: 1 Km</div>	<b>POSITION</b> <div>Ouest du Sud-Est</div>
<b>MEUBLÉ</b> <ul style="list-style-type: none"><li>Vide</li></ul>	<b>PARKING PAS. CAR</b> <div>Garage no. Car : 1</div> <div>: 1</div>	<b>ÉTAGE</b> <ul style="list-style-type: none"><li>Tuiles</li><li>Stone</li></ul>	<b>CUISINE</b> <ul style="list-style-type: none"><li>Cuisine</li><li>Cuisine équipée</li></ul>
<b>JARD RIVIÈRE ET TERRASSES N</b> <ul style="list-style-type: none"><li>Terrasse couverte</li><li>Terrasse ouverte</li><li>Playground</li><li>Paysage</li><li>murs en pierre</li><li>Jard RIVER n privée</li><li>Jard RIVER Communauté</li></ul>	<b>EXTRA</b> <ul style="list-style-type: none"><li>Intégré</li><li>Porte de sécurité</li><li>Double vitrage</li></ul>		







1 to 3 bedrooms · Ground floors with garden · Big terraces · Underground parking · Recreational area · 2 levels cascade pool · 1<sup>st</sup> qualities

GROUND FLOOR A



useful house surface = 100,23 m²

1<sup>st</sup> FLOOR A

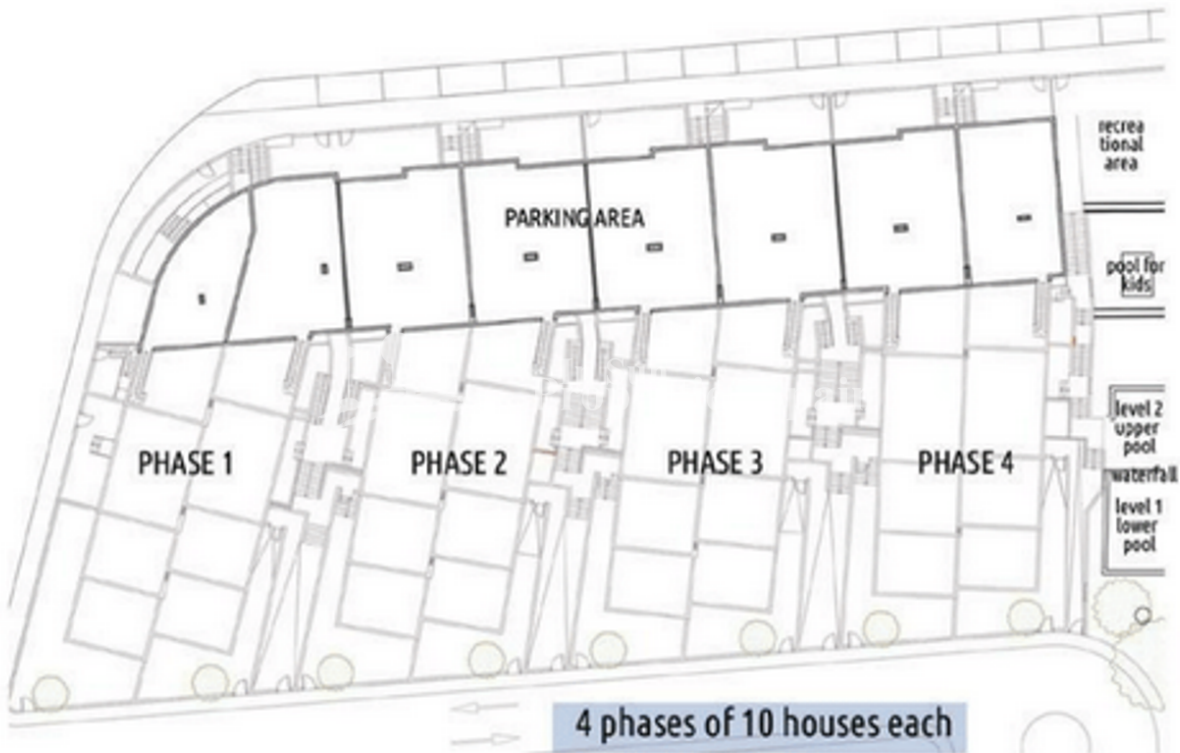


useful house surface = 104,81 m²

2<sup>nd</sup> FLOOR A



useful house surface = 105,85 m²



4 phases of 10 houses each





*"Experience our experience - Because you deserve the best"*