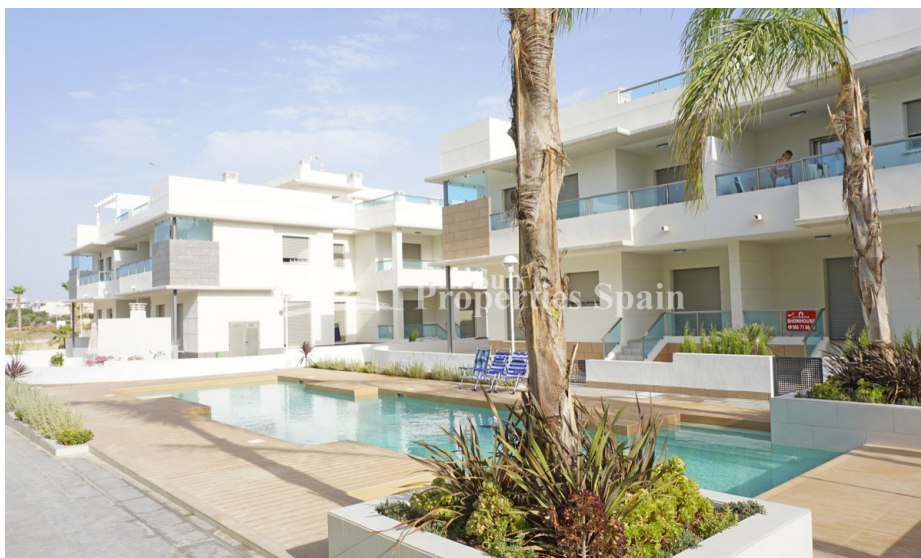




REF: # 5948

()



INFO

PRIX: 188.000 €

Type de propriété: Appartement

Emplacement: ()

Chambres à coucher: 3

Ba ENFANTS: 2

Built: 102 (m2)

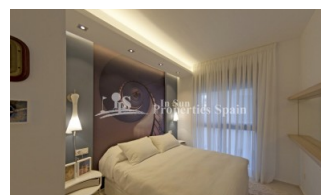
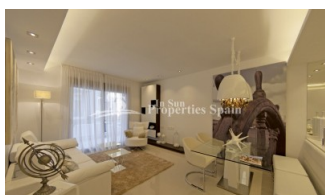
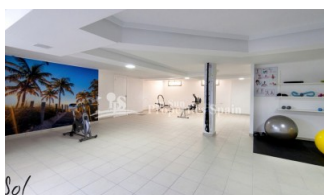
pas: -

Terrasse: 35 (m2)

A ENFANTS:

de plante: -

MESSAGE -



DESCRIPTION

Gran Sol is a new KEY READY residential located in Doña Pepa, an elegant urbanisation with wide avenues, wonderful views to the Natural Park and the salt lakes with a wide range of leisure activities and all the necessary amenities. Available are these 3 bedrooms, 2 bathroom Ground Floor, Corner Apartments of 102m2 with 35m2 private garden with tiled area and artificial grass, storage room, access to four swimming pools, beautiful Green areas, Gym and a private gated parking inside the residential. Each block also has a lift that leads directly to the solarium. Its high-tech architecture with pure lines combines perfectly with its predominant colour (white) giving a sensation of harmony. Doña Pepa is a modern urbanisation belonging to Ciudad Quesada and has all the amenities which include supermarkets, bars, hotel and shops as well as a bank. Ciudad Quesada town centre is a ten minute walk from Doña Pepa. In Ciudad Quesada itself you will find international supermarkets, restaurants, banks, a medical centre as well as a water park. The property is ideally located if you are a golf enthusiast, with La Marquesqa Golf Club just a five minute drive away. The nearest beaches are at Guardamar/Campomar and La Mata ten minutes drive away. Nearest Airports: San Javier (Murcia) - Approx 30 minute drive Alicante Airport - Approx 30 minute drive

STYLE <ul style="list-style-type: none">• moderne• contemporain	VIEW <ul style="list-style-type: none">• Panoramico	DISTANCE : <div>Beach : 7 Km</div> <div>aéroport: 30 Km</div> <div>: 1 Km</div>	POSITION <div>Ouest du Sud-Est</div>
PARKING PAS. CAR <div>: 1</div>	ZONES <ul style="list-style-type: none">• stockage• Gymnasio	ÉTAGE <ul style="list-style-type: none">• Tuiles• Stone	CUISINE <ul style="list-style-type: none">• Cuisine• Cuisine équipée
JARD RIVIÈRE ET TERRASSES N <ul style="list-style-type: none">• Terrasse couverte• Terrasse ouverte• Paysage• murs en pierre• barbecue / grill• Jard RIVER n privée• Jard RIVER Communauté	EXTRA <ul style="list-style-type: none">• Intégré• Porte de sécurité• Double vitrage• Elevator		













"Experience our experience - Because you deserve the best"