



**In Sun  
Properties Spain**  
since 1999

REF: # 6088

## INFO

**PRIX:** 1.200.000 €

**Type de propriété:** Villa

**Emplacement:**

**Chambres à coucher:** 3

**Ba ENFANTS:** 3

**Built:** 359 (m2)

**pas:** 800 (m2)

**Terrasse:** -

**A ENFANTS:** -

**de plante:** -

**MESSAGE** -



## DESCRIPTION

Modern design villa to be constructed in an elevated position in Benimeit, offering panoramic sea views. This turn-key project will be finished with high quality materials and installations of premium brands and will include full underfloor heating, full air conditioning, solar heated water, fully fitted luxury kitchen, luxury bathrooms, aluminium window frames, electric blinds for the bedroom windows, infinity pool, terracing, garden walls, driveway, double garage, automatic gate and many other features. Please contact us for more information!

VIEW

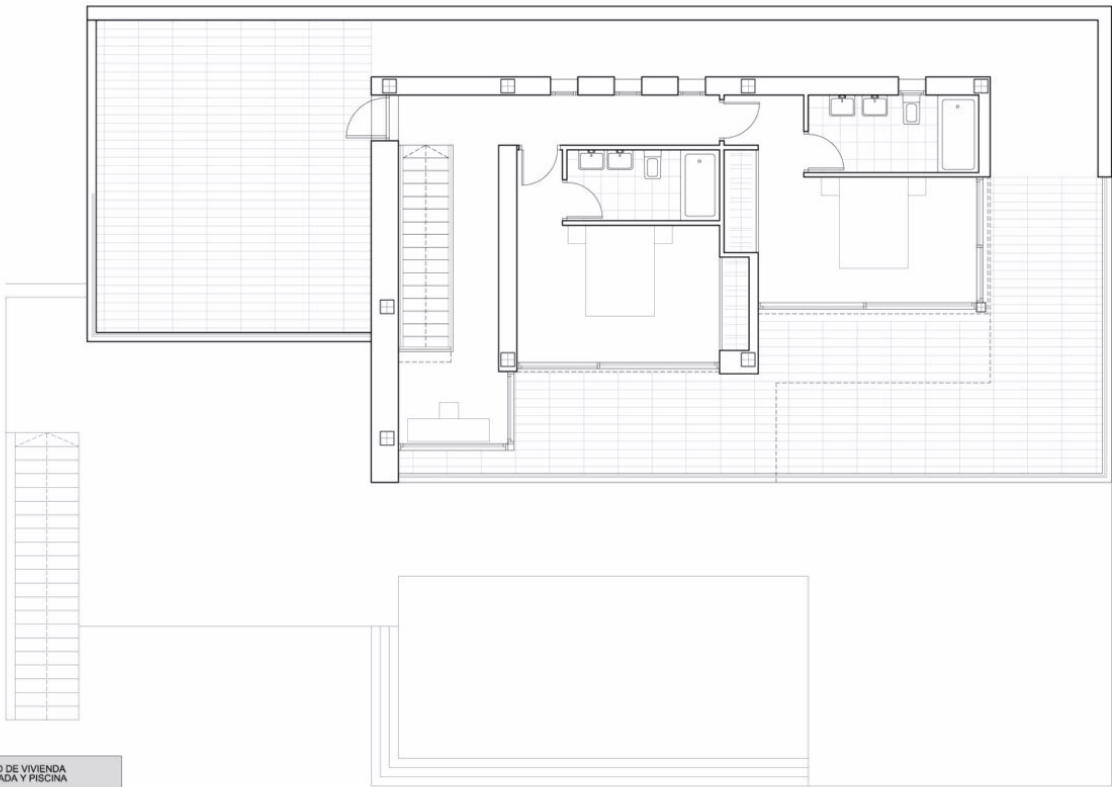
- Panoramico
- Ocean

PARKING PAS. CAR

Garage no. Car : 1



SUP. CONS.	
PLANTA BAJA	
VIVIENDA	138.78m <sup>2</sup>
PORCHE-BBQ	41.44m <sup>2</sup>
VOLADIZOS	5.44m <sup>2</sup>
TERRAZA	109.83m <sup>2</sup>
PISCINA	36.00m <sup>2</sup>
PLANTA ALTA	
VIVIENDA	87.60m <sup>2</sup>
VOLADIZOS	1.80m <sup>2</sup>
PORCHE	21.35m <sup>2</sup>
TERRAZAS	74.05m <sup>2</sup>
ACERA PERIMET.	31.07m <sup>2</sup>
PLANTA SÓTANO	
GARAJE	41.18m <sup>2</sup>
VOLADIZO	6.59m <sup>2</sup>
VIVIENDA	18.67m <sup>2</sup>
DEPÓSITO AGUA	17.79m <sup>2</sup>
DEPÓSITO COMP.	4.91m <sup>2</sup>
DEPURADORA	10.14m <sup>2</sup>
ACABADO EXTERIORES	
ESCALERA EXT.	10.08m <sup>2</sup>



ANTEPROYECTO DE VIVIENDA  
UNIFAMILIAR AISLADA Y PISCINA

PROMOTOR: Orange Villas  
SITUACIÓN: Calle Beniamín  
POBLACION: Teulada-Moraira (ALICANTE)

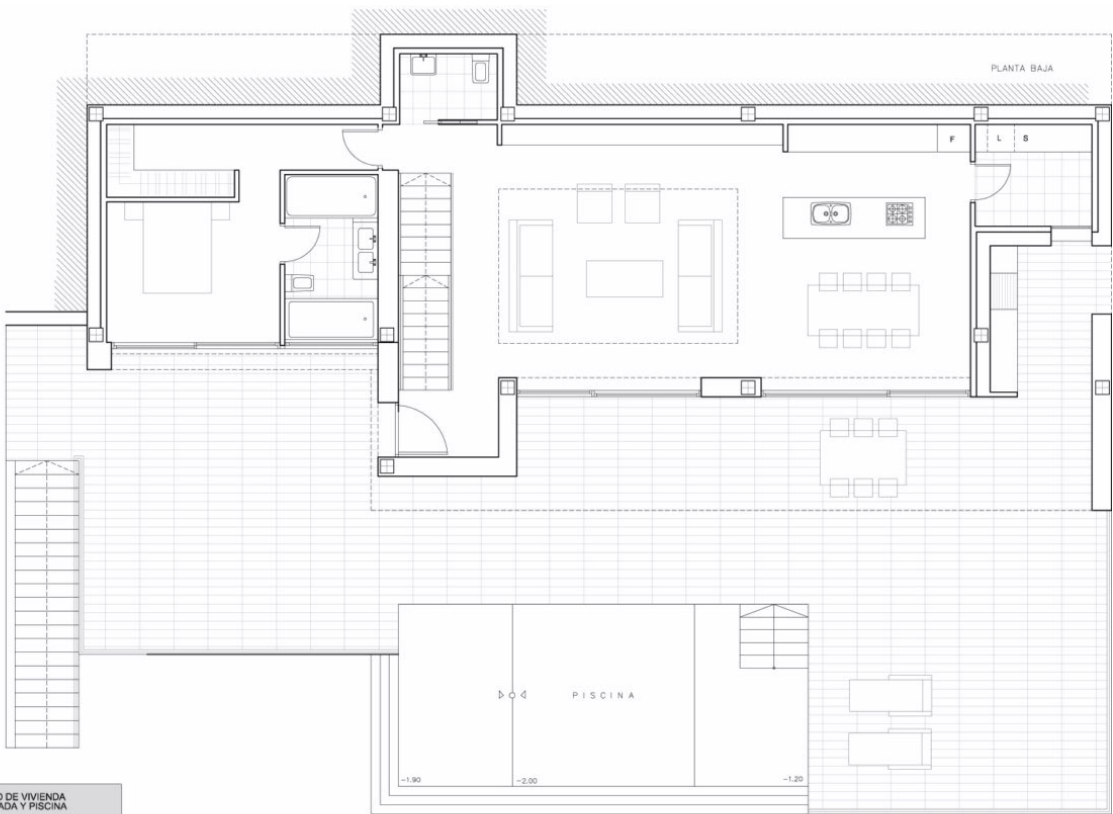
A-83-15

PLANTA ALTA

E: 1 / 100

0 1 2 3 4 5

SUP. CONE.	
<b>PLANTA BAJA</b>	
VIVIENDA	138.78m <sup>2</sup>
PORCHE-BBQ	41.44m <sup>2</sup>
VOLADIZOS	5.44m <sup>2</sup>
TERRAZA	109.83m <sup>2</sup>
PISCINA	36.00m <sup>2</sup>
<b>PLANTA ALTA</b>	
VIVIENDA	87.60m <sup>2</sup>
VOLADIZOS	1.80m <sup>2</sup>
PORCHE	21.35m <sup>2</sup>
TERRAZAS	74.05m <sup>2</sup>
ACERA PERIMET.	31.07m <sup>2</sup>
<b>PLANTA SÓTANO</b>	
GARAJE	41.16m <sup>2</sup>
VOLADIZO	6.59m <sup>2</sup>
VIVIENDA	18.67m <sup>2</sup>
DEPÓSITO AGUA	17.78m <sup>2</sup>
DEPÓSITO COMP.	4.57m <sup>2</sup>
DEPURADORA	10.14m <sup>2</sup>
<b>ACABADO EXTERIORES</b>	
ESCALERA EXT.	10.08m <sup>2</sup>

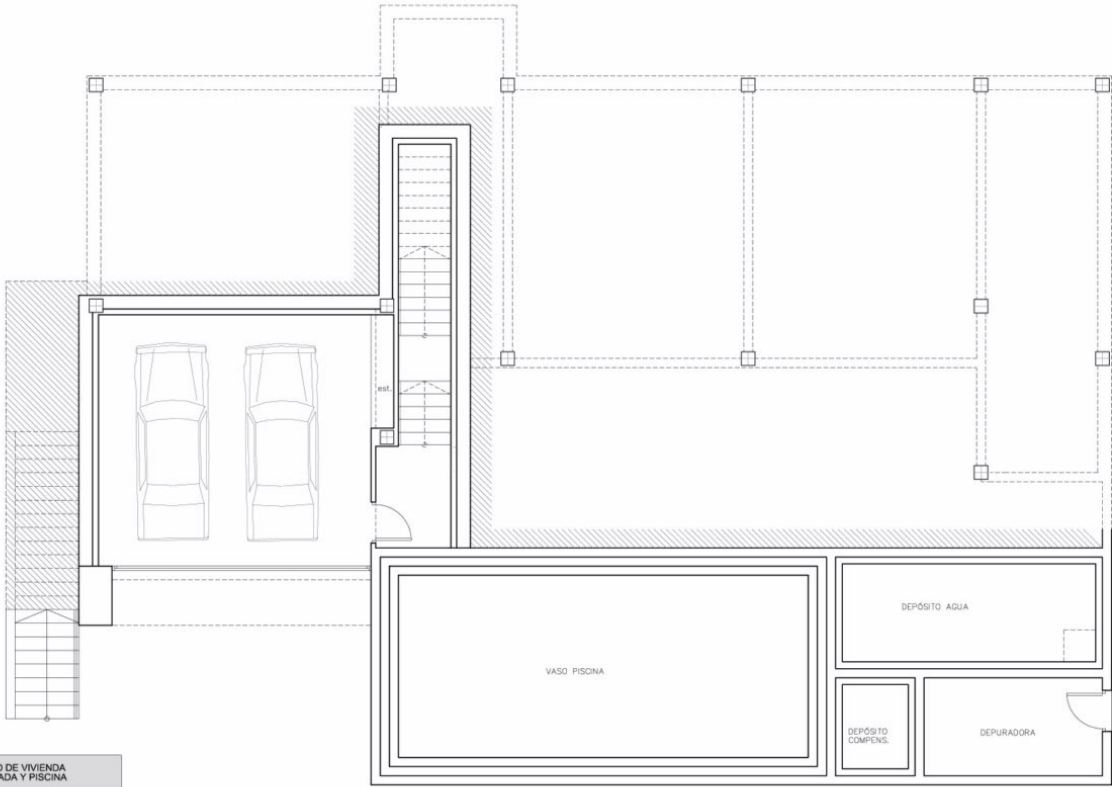


**ANTEPROYECTO DE VIVIENDA UNIFAMILIAR AISLADA Y PISCINA**

PROMOTOR: Orange Villas  
SITUACIÓN: Calle Beniamín  
POBLACIÓN: Teulada-Moraira (ALICANTE)

A-83-15

SUP. CONE.	
<b>PLANTA BAJA</b>	
VIVIENDA	138.78m <sup>2</sup>
PORCHE-BBQ	41.44m <sup>2</sup>
VOLADIZOS	5.44m <sup>2</sup>
TERRAZA	109.83m <sup>2</sup>
PISCINA	36.00m <sup>2</sup>
<b>PLANTA ALTA</b>	
VIVIENDA	87.60m <sup>2</sup>
VOLADIZOS	1.80m <sup>2</sup>
PORCHE	21.35m <sup>2</sup>
TERRAZAS	74.05m <sup>2</sup>
ACERA PERIMET.	31.07m <sup>2</sup>
<b>PLANTA SÓTANO</b>	
GARAJE	41.16m <sup>2</sup>
VOLADIZO	6.59m <sup>2</sup>
VIVIENDA	18.67m <sup>2</sup>
DEPÓSITO AGUA	17.78m <sup>2</sup>
DEPÓSITO COMP.	4.57m <sup>2</sup>
DEPURADORA	10.14m <sup>2</sup>
<b>ACABADO EXTERIORES</b>	
ESCALERA EXT.	10.08m <sup>2</sup>



**ANTEPROYECTO DE VIVIENDA UNIFAMILIAR AISLADA Y PISCINA**

PROMOTOR: Orange Villas  
SITUACIÓN: Calle Beniamín  
POBLACIÓN: Teulada-Moraira (ALICANTE)

A-83-15





*"Experience our experience - Because you deserve the best"*