



**In Sun
Properties Spain**
since 1999

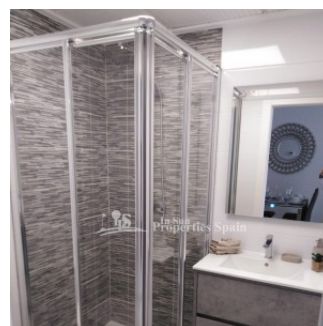
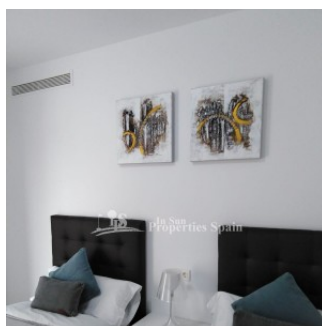
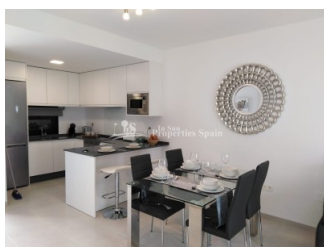
REF: # 0

()



INFO

PRIX:	164.950 €
Type de propriété:	Appartement
Emplacement:	()
Chambres à coucher:	2
Ba ENFANTS:	2
Built:	72 (m2)
pas:	-
Terrasse:	20 (m2)
A ENFANTS:	
de plante:	-
MESSAGE	146.950 €



DESCRIPTION

A new development of Apartments (Bungalows on the Ground Floor or Top Floor) in SAN PEDRO DEL PINATAR, MURCIA. Ground floor Apartments of 72m2 have a 20m2 garden and start from €146,950 and Top Floor of 72m2 have a private 67m2 solarium and start from €161,950. They offer an open plan modern layout with lounge, dining area and fitted kitchen complete with white goods (for limited time), 2 bedrooms and 2 bathrooms, complete with mirror and shower screen (for a limited time). During the promotional period the Apartments come complete with pre-installation of AC and LED lighting inside and out. 10 minutes walk from Parque Natural Las Salinas and only 5 minutes from the Beach of El Mojon. Facing the tranquil waters of Mar Menor, San Pedro del Pinatar is one of the main tourist destinations on the Murcia coast. The main attractions of San Pedro are concentrated around the beach and shore. Here you will find Lo Pagán, a lively tourist centre which has all kinds of holiday facilities, such as hotels, bars, restaurants and shops. You can also benefit from the therapeutic properties of its mud, especially suitable for treating bone and skin ailments. 35 minutes from Murcia Corvera International Airport. FASE I key Ready LIMITED AVAILABILITY Ground floor Apartment complete with furniture pack, AC, lighting, white goods and finished bathroom just 155,000€ with 2 beds, 2 baths

STYLE	DISTANCE :	POSITION	MEUBLÉ
<ul style="list-style-type: none">• moderne• contemporain	Beach : 2 Km aéroport: 50 Km : 1 Km	Ouest du Sud-Est	<ul style="list-style-type: none">• meublé• Vide
PARKING PAS. CAR	ÉTAGE	CUISINE	JARD RIVIÈRE ET TERRASSES N
: 1	<ul style="list-style-type: none">• Tuiles• Stone	<ul style="list-style-type: none">• Cuisine• Cuisine équipée	<ul style="list-style-type: none">• Terrasse couverte• Terrasse ouverte• Feux extérieurs• Jard RIVER n privée• Jard RIVER Communauté
EXTRA			
<ul style="list-style-type: none">• Intégré• Porte de sécurité• Double vitrage			















Parcela General



Perspectiva



Superficies

Planta	Uso	Sup. útil	Sup. const.
baja	vivienda	62.70 m²	71.28 m²
	porche	7.70 m²	7.70 m²
Total		70.40 m²	78.98 m²
Terraza			10.35 m²
Patio			4.05 m²

E 1/50 0 0.5 1 2 5m

C2M
arqui
tec
tura

< 2 of 4 >



15%







"Experience our experience - Because you deserve the best"