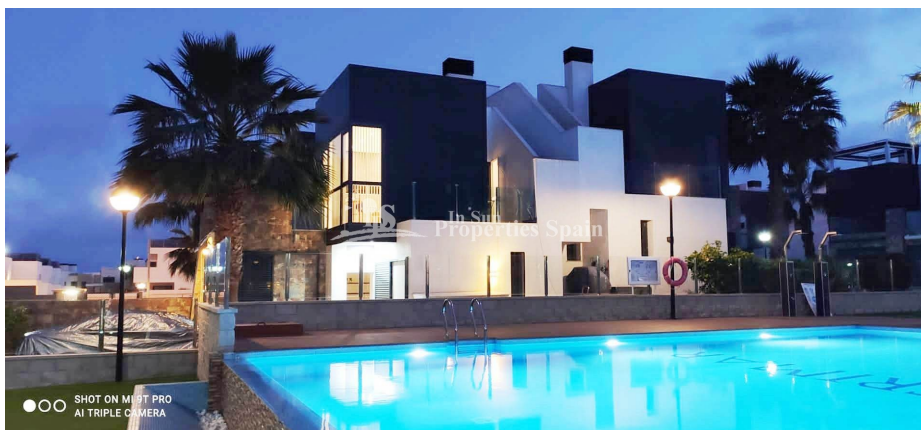




**In Sun
Properties Spain**
since 1999

REF: # 8902

()



INFO

PRIX: 229.000 €

Type de propriété: Maison mitoyenne (Quad)

Emplacement: ()

Chambres à coucher: 2

Ba ENFANTS: 2

Built: 81 (m2)

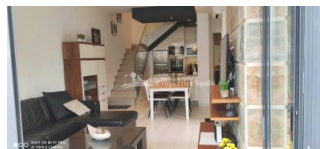
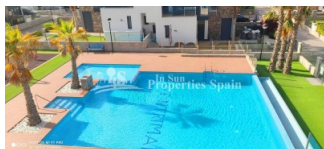
pas: 150 (m2)

Terrasse: 51 (m2)

A ENFANTS:

de plante: -

MESSAGE 239.900 €



DESCRIPTION

Located within OASIS HILL – LOMAS DE CABO ROIG is this lovely MODERN QUAD HOUSE with a pleasant open aspect over the Community pool . The house is of 81m2 build and occupies a 150m2 plot. There is space within the plot to park a car and several storage areas. Internally you have a light and airy lounge an American style kitchen, complete with appliances and a bedroom and bathroom. To the first floor you have a double bedrooms with built in wardrobes ,en suite bathroom and 28m2 private terraces with stairs up to the 25m2 solarium where you can enjoy the sun all day long and the stunning sea and pool views, the perfect place to relax .Oasis Hill Community is gated and can only be accessed by residents. The property is in walking distance to the NEW Commercial Center-Lomas De Cabo Roig and Supermarket, Bars and Restaurants and only 2km/5 minute from La Zenia Boulevard, the largest open-air shopping center in Europe and to the Beach! Cabo Roig is a popular beach resort situated in between La Zenia to the north and Campoamor to the south and with easy access to Alicante and Murcia airport in approximately 50 minutes drive.

STYLE	VIEW	CLIMATISATION	DISTANCE :
<ul style="list-style-type: none">• moderne• contemporain	<ul style="list-style-type: none">• Panoramico• Ocean	<ul style="list-style-type: none">• manger• Cuisine• Chambres	Beach : 2 Km aéroport: 40 Km : 2 Km
POSITION	MEUBLÉ	PARKING PAS. CAR	FRAIS
West	<ul style="list-style-type: none">• meublé	: 1	Communauté : 500 € I.B.I : 258 €
ZONES	ÉTAGE	CUISINE	JARD RIVIÈRE ET TERRASSES N
<ul style="list-style-type: none">• stockage• Ou chambre Baignade	<ul style="list-style-type: none">• Tuiles	<ul style="list-style-type: none">• Cuisine• Cuisine fermée• Cuisine équipée	<ul style="list-style-type: none">• Terrasse ouverte• Feux extérieurs• irrigation automatique• Palm• clôtures• murs en pierre• Jard RIVER n privée• Jard RIVER Communauté
EXTRA			
<ul style="list-style-type: none">• Intégré• Porte de sécurité• Double vitrage• Satellite TV• Stockage			

PROPERTY GALLERY





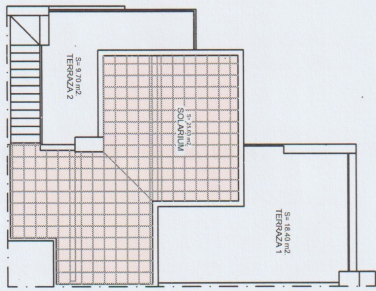




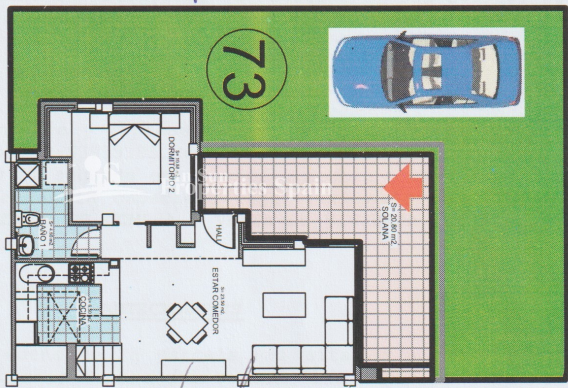
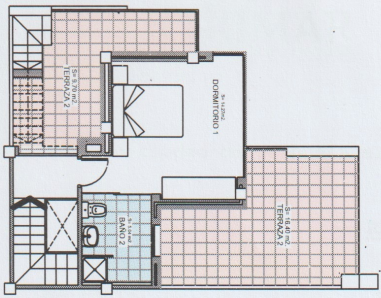




PLANTA SOLARIUM

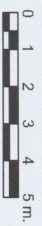


PLANTA PRIMERA

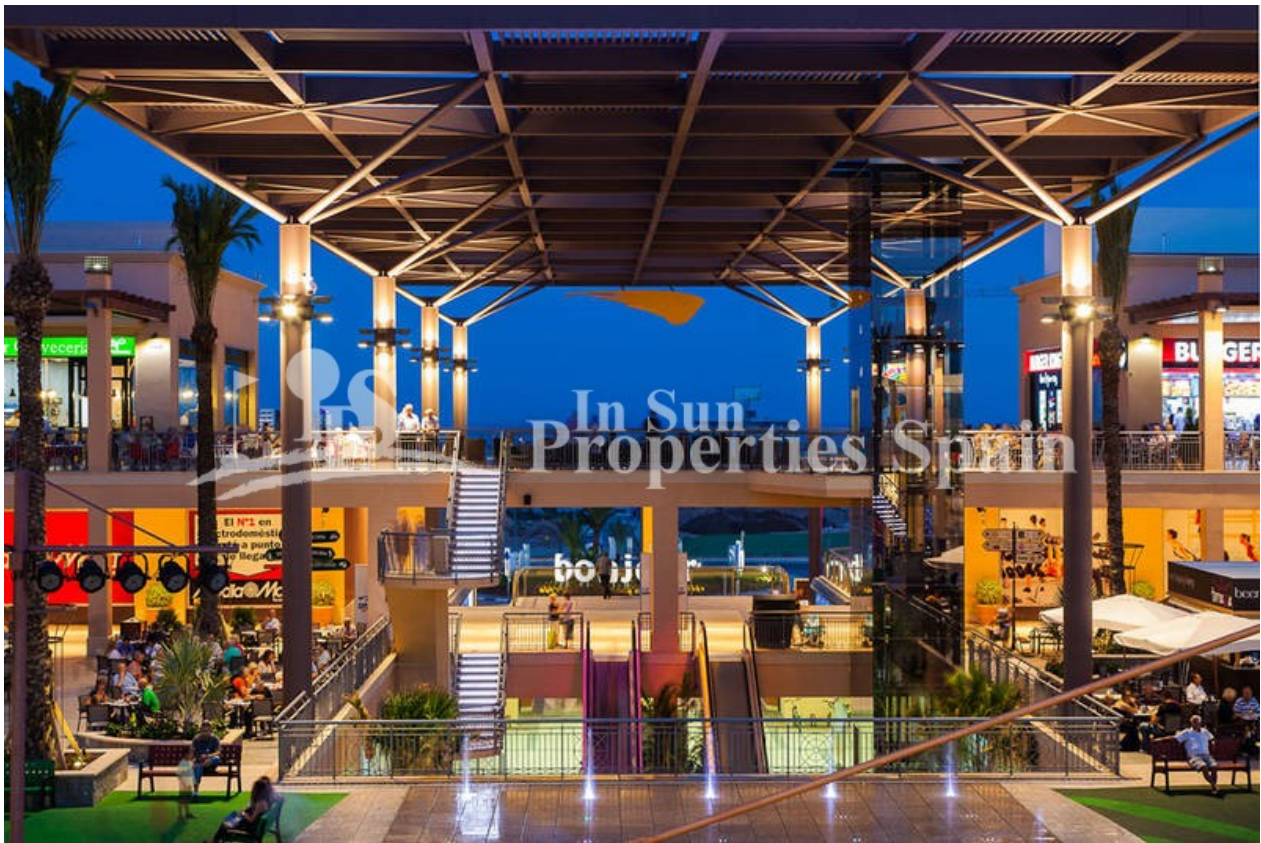


SUPERFICIES CONSTRUIDAS

- SUPERFICIE PLANTA BAJA 55.32 m²
- SUPERFICIE SOLANA 20.80 m²
- SUPERFICIE PLANTA PRIMERA 25.63 m²
- SUPERFICIE TERRAZAS 28.10 m²
- SUPERFICIE SOLARIUM 25.63 m²
- SUPERFICIE CONSTRUIDA TOTAL 80.95 m²







"Experience our experience - Because you deserve the best"