

REF: # 9945

()



INFO

PRIX:	286.000 €
Type de propriété:	Appartement (Penthouse)
Emplacement:	()
Chambres à coucher:	3
Ba ENFANTS:	2
Built:	97 (m2)
pas:	-
Terrasse:	68 (m2)
A ENFANTS:	
de plante:	-
MESSAGE	-



DESCRIPTION

FANTASTIC COMPLEX RESIDENTIAL OF NEW BUILD APARTMENTS PENTHOUSE IN LAS VILLAMARTIN ORIHUELA COSTA with communal pool. This 97m2 penthouse apartment consists of 3 bedrooms, 2 bathrooms, an open plan kitchen with living room, a 15m2 private terrace and a 53m2 solarium. The communal areas are approximately 3.300 m2 and have WIFI, 2 swimming pools, a Jacuzzi and 2 Petanque courts. This residential consists of 94 apartments and is located in Las Filipinas which is in the area of Villamartin Golf on the Orihuela Costa and has been designed to meet the needs of those looking for a Mediterranean lifestyle in a quiet but well established area close to the sea and all amenities. Villamartin was built around one of the most prestigious golf courses on the Costa Blanca "Villamartín Golf Club" and is home to a cosmopolitan and International with one of the healthiest climates in the world. Just a short distance away you can find four other golf courses such as Las Ramblas, Campoamor, Las Colinas and La Finca. It is also home to some of the best blue flag beaches in the region like La Zenia, Cabo Roig and Campoamor only 5km drive away. The area offers such a wide range of services including weekly markets, the renowned high standard international school "El Limonar" and the famous "La Zenia Boulevard" centre, the largest of its kind in southern Spain! Situated close to many commercial centres including the well know Villamartin Plaza and La Fuente Centre along with many restaurants, fashion shops, supermarkets, banks, pharmacies and much more that you really are spoilt for choice. The area is not just a golfer's paradise you can find a large range of activities and entertainment for all the family to enjoy, so, whether you are looking for a holiday home, a Golf property or a permanent residence,

this development offers everything you could possibly need! The complex is located only 40 minutes from Alicante Airport and 1 hour from Murcia (Corvera) Airport.

STYLE	VIEW	DISTANCE :	PARKING PAS. CAR
<ul style="list-style-type: none">moderne	<ul style="list-style-type: none">Panoramico	Beach : 5 Km aéroport: 70 Km	: 1
CUISINE	JARD RIVIÈRE ET TERRASSES N	EXTRA	
<ul style="list-style-type: none">Cuisine	<ul style="list-style-type: none">Terrasse couverteJard RIVER Communauté	<ul style="list-style-type: none">Cuve extérieureIntégréPorte de sécuritéElevator	







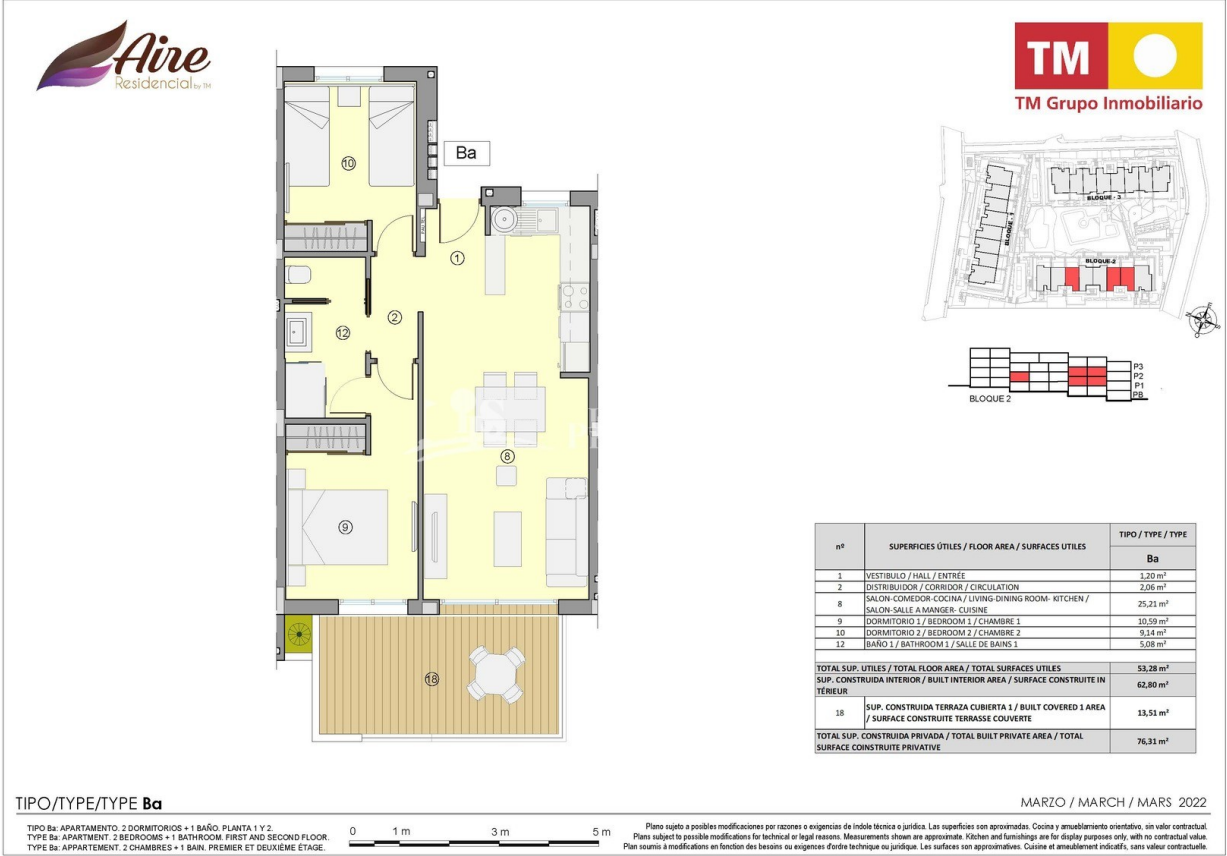












62	Piscina adults	Adult pool	Piscina adults	78	Buñuelos	Mallowes	Berles aux lettres
63	Piscina infantil	Children pool	Piscina infantil	81	Salida apartamentos	Parking exit	Sortie parking
65	Entrada peatonal	Entrance	Entrée	83	Acceso peatonal a apartamentos	Pedestrian access to the carpark	Entrée piétonnière au parking
67	Entrada apartamentos	Parking entrance	Entrée parking	90	Duchas	Showers	Douche
74	Jacuzzi	Jacuzzi	Jacuzzi	114	Juegos peñales	Games penance	Jeux pénitence
76	Aparcamiento bici	Bike parking	Parking a vélos	121	Centro de transformación	Distribution substation	Transformateur



PLANTA GENERAL DE URBANIZACIÓN
GENERAL PLAN OF URBANIZATION
PLAN GÉNÉRAL D'URBANISATION

0 2 4 6 8 10m

PLANTA SUJETA A POSIBLES MODIFICACIONES DEL PROYECTO O EXIGENCIAS DE CRÉDITO TÉCNICO O JURÍDICO. LAS QUANTIDADES SON APROXIMATIVAS.
PLANS SUBJECT TO POSSIBLE MODIFICATIONS FOR TECHNICAL OR LEGAL REASONS. MEASUREMENTS SHOWN ARE APPROXIMATIVE.
PLAN SOUMIS A MODIFICATIONS EN FONCTION DES BESOINS DU CRÉDIT TECHNIQUE OU JURIDIQUE. LES QUANTITÉS SONT APPROXIMATIVES.



"Experience our experience - Because you deserve the best"