



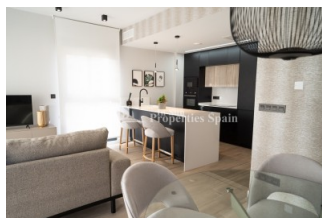
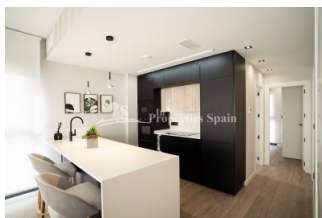
REF: # 11380

PILAR DE LA HORADADA



#### INFO

<b>PRICE:</b>	370.000 €
<b>PROPERTY TYPE:</b>	Penthouse
<b>LOCATION:</b>	Pilar De La Horadada
<b>BEDROOMS:</b>	2
<b>BATHROOMS:</b>	2
<b>BUILD:</b>	72 (m2)
<b>PLOT:</b>	-
<b>TERRACE:</b>	64 (m2)
<b>YEAR:</b>	
<b>FLOOR:</b>	-
<b>OLD PRICE</b>	-



#### DESCRIPTION

BEAUTIFUL NEW BUILD RESIDENTIAL COMPLEX OF, GROUND FLOOR and TOP FLOOR APARTMENTS in PILAR DE LA HORRADADA Top Floor Apartments: 72m2 consists of 2 or 3 bedrooms ,2 bathrooms and a 64m2 solarium, parking. Ground Floor Apartmens: 79m2 consists of 3 bedrooms, 2 bathrooms a terrace, parking and a 118m2 private garden. The complex will offer nice green areas with a playground for children, communal pools. It is located just a few meters from the centre of Pilar de la Horradada where you will find all the amenities you may need; nice restaurants, cafes, supermarkets, pharmacies and more. Just view km away from the beach of Torre de la Horradada and Mil Palmeras and the golf courses Lo Romero, as well as the commercial centres Zenia Boulevard and Dos Mares. Nearest Airports: Alicante Airport 45mins drive (60km) and Murcia (Corvera) 42 mins (58km).

<b>STYLE</b> <ul style="list-style-type: none"> <li>• Modern</li> <li>• Contemporary</li> </ul>	<b>VIEWS</b> <ul style="list-style-type: none"> <li>• Panoramic views</li> </ul>	<b>AIRCONDITIONING</b> <ul style="list-style-type: none"> <li>• Central airconditioning</li> </ul>	<b>DISTANCE TO :</b> <div>Beach : 3 Km</div> <div>Airport: 50 Km</div> <div>Town center : 1 Km</div>
<b>ORIENTATION</b> <div>South west</div>	<b>FURNITURE</b> <ul style="list-style-type: none"> <li>• Not furnished</li> </ul>	<b>PARKING</b> <div>Parking no Cars: 1</div>	<b>MAIN LIVING AREA</b> <ul style="list-style-type: none"> <li>• Bathroom en-suite</li> </ul>
<b>FLOORING</b> <ul style="list-style-type: none"> <li>• Tile floors</li> </ul>	<b>KITCHEN</b> <ul style="list-style-type: none"> <li>• Open kitchen</li> <li>• Equipped kitchen</li> <li>• Granite countertop</li> </ul>	<b>GARDEN AND TERRACES</b> <ul style="list-style-type: none"> <li>• Covered terrace</li> <li>• Open terrace</li> <li>• Fenced</li> <li>• Stone walls</li> <li>• Communal Garden</li> </ul>	<b>HEATING</b> <ul style="list-style-type: none"> <li>• Central electric heating</li> </ul>
<b>EXTRA</b> <ul style="list-style-type: none"> <li>• Built in wardrobes</li> <li>• Double glazed windows</li> </ul>			

*"Experience our experience - Because you deserve the best"*