



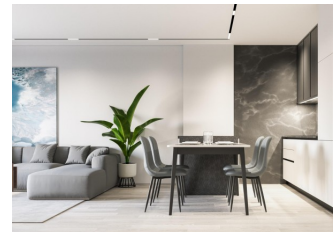
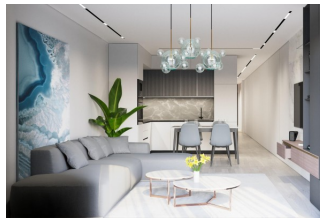
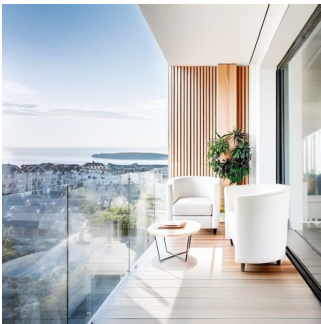
REF: # 12488

TORREVIEJA



INFO

PRICE:	219.000 €
PROPERTY TYPE:	Apartment
LOCATION:	Torrevieja
BEDROOMS:	2
BATHROOMS:	1
BUILD:	71 (m2)
PLOT:	-
TERRACE:	7 (m2)
YEAR:	-
FLOOR:	-
OLD PRICE	-



DESCRIPTION

Modern Apartments, New Development in Prime Location, just 250m from El Cura Beach in Torrevieja! This newly built apartment building is located just 250 meters from the famous El Cura Beach in Torrevieja, offering residents easy access to one of the most popular beaches in the area. The building consists of 17 units, featuring 1 and 2-bedroom apartments, each with 1 or 2 bathrooms. Additionally, there are penthouses available with private solarium's and stunning sea views, perfect for enjoying the Mediterranean lifestyle. This 71m2 Ground floor apartment consists of 2 bedroom, 1 bathroom and open plan kitchen / dining/ lounge area. Metal security grilles on balconies and windows in ground floor dwellings. Premium Amenities for relaxation, residents can take advantage of the rooftop community pool and solarium, ideal for unwinding after a day at the beach. The building also offers optional underground parking spaces and storage rooms, available for an additional cost, providing extra convenience and security for residents. Torrevieja is a lively city known for its year-round cultural and recreational activities, making it a great destination for both permanent residents and vacationers. With a mild climate and over 300 days of sunshine annually, the area is perfect for those who enjoy outdoor activities and beach life. Ideal Location with Easy Access to Points of Interest, this property is ideally located close to all essential services, including supermarkets, restaurants, and entertainment venues. Major points of interest are easily accessible: Alicante Airport is just 45 km away, several Golf Courses within 7-10 km, Zenia

Boulevard Shopping Center is only 8 km away and the port of Torrevieja is just 2 km from the building. Enjoy modern living by the sea in a vibrant and well-connected area with everything you need just a short distance away.

STYLE	VIEWS	AIRCONDITIONING	DISTANCE TO :
<ul style="list-style-type: none">ModernContemporary	<ul style="list-style-type: none">Panoramic views	<ul style="list-style-type: none">Central airconditioning	Beach : 200 m Airport: 40 Km
FURNITURE	PARKING	FLOORING	KITCHEN
<ul style="list-style-type: none">Not furnished	Parking no Cars: 1	<ul style="list-style-type: none">Tile floorsStone floors	<ul style="list-style-type: none">Open kitchen
EXTRA			
<ul style="list-style-type: none">Built in wardrobesAlarmReinforced doorDouble glazed windowsLift			

"Experience our experience - Because you deserve the best"