



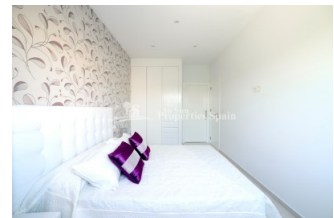
REF: # 4088

ORIHUELA COSTA (LO PAGAN-SAN PEDRO )



#### INFO

<b>PRICE:</b>	189.950 €
<b>PROPERTY TYPE:</b>	Villa
<b>LOCATION:</b>	Orihuela Costa (Lo Pagan-San Pedro )
<b>BEDROOMS:</b>	3
<b>BATHROOMS:</b>	2
<b>BUILD:</b>	102 (m2)
<b>PLOT:</b>	134 (m2)
<b>TERRACE:</b>	37 (m2)
<b>YEAR:</b>	
<b>FLOOR:</b>	-
<b>OLD PRICE</b>	-



#### DESCRIPTION

This NEW modern luxury design 3 bedroom, 2 bathroom Detached - Villa with private pool on two floors. These beautiful designed 102 m2 houses will be constructed with top quality materials on a 134 m2 plot with private pool. Ground floor with open modern integrated kitchen, dining /living area, 1 double bedroom 1 bedrooms and sunny terraces with pool views, first floor with 2 bedrooms with fitted wardrobe, 1 bathrooms and terrace. Modern style finishes and built in the best quality materials. Walking distance to restaurants, bars, supermarket and all amenities . This area has a Thalassotherapy SPA Hotel and also offers a variety of sports activities, including seasonal water sports, you can choose from 5 Championship golf courses all within 10 minutes drive — the Pinatar arena is 5 minutes walk away with football, gym, cricket and tennis courts.

<b>STYLE</b> <ul style="list-style-type: none"> <li>Mediterranean</li> </ul>	<b>VIEWS</b> <ul style="list-style-type: none"> <li>Panoramic views</li> </ul>	<b>AIRCONDITIONING</b> <ul style="list-style-type: none"> <li>Central airconditioning</li> </ul>	<b>DISTANCE TO :</b> <div>Beach : 2 Km</div> <div>Airport: 20 Km</div> <div>Town center : 1 Km</div>
<b>ORIENTATION</b> <div>South west</div>	<b>FURNITURE</b> <ul style="list-style-type: none"> <li>Not furnished</li> </ul>	<b>PARKING</b> <div>Parking no Cars: 1</div>	<b>MAIN LIVING AREA</b> <ul style="list-style-type: none"> <li>Bathroom en-suite</li> </ul>
<b>FLOORING</b> <ul style="list-style-type: none"> <li>Tile floors</li> <li>Stone floors</li> </ul>	<b>KITCHEN</b> <ul style="list-style-type: none"> <li>Open kitchen</li> <li>Equipped kitchen</li> <li>Granite countertop</li> </ul>	<b>GARDEN AND TERRACES</b> <ul style="list-style-type: none"> <li>Open terrace</li> <li>Fenced</li> <li>Stone walls</li> <li>Private garden</li> </ul>	<b>EXTRA</b> <ul style="list-style-type: none"> <li>Built in wardrobes</li> <li>Double glazed windows</li> </ul>

*"Experience our experience - Because you deserve the best"*