



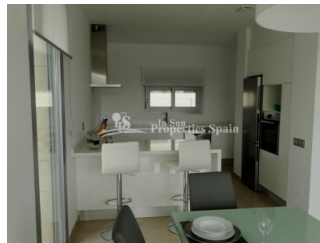
REF: # 4364

ORIHUELA COSTA (VISTABELLA GOLF COURSE)



INFO

PRICE:	289.900 €
PROPERTY TYPE:	Villa
LOCATION:	Orihuela Costa (Vistabella Golf Course)
BEDROOMS:	3
BATHROOMS:	2
BUILD:	122 (m2)
PLOT:	390 (m2)
TERRACE:	47 (m2)
YEAR:	
FLOOR:	-
OLD PRICE	-



DESCRIPTION

VISTABELLA GOLF RESORT offers for sale these 4 models of Detached 2 Storey Villas with optional private swimming pool. All have parking within the plot. Estimated delivery is around 12-18 months. Villas MALIBU of 122m2 with 47m2 of terraces have 3 bedrooms, 2 bathrooms with one of the bedrooms and bathroom on the ground floor. They occupy plots from 390m2 and start at €289,900. Villas MALDIVA (SOLD OUT) of 130m2 with 50m2 of terraces have 3 bedrooms, 3 bathrooms, (one bed, one bath to the ground floor). These Villas occupy plots from 515m2 and start from €309,900. Villas BORA of 161m2 with 41m2 of terraces occupy plots from 515m2 and start from €379,900. They boast 4 bedrooms, 3 bathrooms, with 2 bedrooms and 1 bathroom to the ground floor. To the first floor there are two further bedrooms both with dressing areas. The master bedroom is quite impressive at 14m2 with 8,50m2 bathroom/dressing area. Whichever model you chose, they will not fail to impress! Vistabella Golf Resort is located between Los Montesinos and San Miguel de Salinas. It is in a privileged location with views towards the salt lakes and sea. It boasts plentiful amounts of open space, 24 hour security, wide streets lined with trees and surround by both the 18-hole Golf Course and the sweet smelling lemon and orange groves. There is a large commercial area within the resort, home to a number of international restaurants, bars, shops, supermarket, ATM and Pharmacy with future plans to continue expansion of the commercial areas to include a doctors, dentist etc. You are within a 15 minute drive to 7 Golf courses, 10

minutes from San Miguel de Salinas and Los Montesinos and 20 minutes to Villamartin. Only 25 minutes from the coast and only 35 minutes from Alicante International Airport.

STYLE	AIRCONDITIONING	DISTANCE TO :	ORIENTATION
<ul style="list-style-type: none">• Modern	<ul style="list-style-type: none">• Bedrooms	Beach : +10 Km Airport: 50 Km Town center : 8 Km	South west
FURNITURE	PARKING	TAX	MAIN LIVING AREA
<ul style="list-style-type: none">• Not furnished	Parking no Cars: 1	Community : 100 €	<ul style="list-style-type: none">• Sauna• Bathroom en-suite
FLOORING	KITCHEN	GARDEN AND TERRACES	EXTRA
<ul style="list-style-type: none">• Tile floors• Stone floors	<ul style="list-style-type: none">• Open kitchen• Equipped kitchen• Granite countertop	<ul style="list-style-type: none">• Covered terrace• Open terrace• Landscaped• Stone walls• Private garden	<ul style="list-style-type: none">• Built in wardrobes• Reinforced door• Double glazed windows

"Experience our experience - Because you deserve the best"