



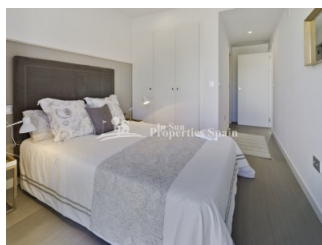
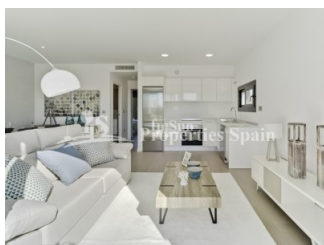
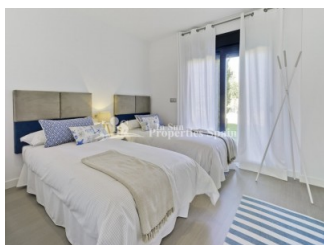
REF: # 4464

ORIHUELA COSTA (PILAR DE LA HORADADA)



#### INFO

<b>PRICE:</b>	269.900 €
<b>PROPERTY TYPE:</b>	Villa
<b>LOCATION:</b>	Orihuela Costa (Pilar de la Horadada)
<b>BEDROOMS:</b>	3
<b>BATHROOMS:</b>	3
<b>BUILD:</b>	115 (m2)
<b>PLOT:</b>	249 (m2)
<b>TERRACE:</b>	94 (m2)
<b>YEAR:</b>	
<b>FLOOR:</b>	-
<b>OLD PRICE</b>	-



#### DESCRIPTION

This is the last remaining Villa of this model on the Central Island at Lo Romero Golf, Pilar de la Horadada. It is EAST facing, 115m2 on a 249m2 plot. The Villa boasts open plan lounge / dining area, private garden and 94m2 rooftop solarium and optional 6x3 swimming pool. These beautiful villas are distributed on one excellently laid out level, giving the room's a very spacious feel. Large master bedroom with en-suite bathroom, full side wall wardrobes with patio door leading onto the private garden – exterior steps take you to the generous rooftop solarium. Lo Romero Golf is a complex of more than 1.25 million square meters, which includes a golf course of 18 holes par 72, with clubhouse and driving range, sports and leisure area, hotel and shops. Its magnificent sea views, prime location, just 5 km from the beautiful beaches of Torre de la Horadada, and its design of wide streets surrounded by lush pine have made this golf resort one of the most popular in the area, since its opening in January 2008.

<b>STYLE</b> <ul style="list-style-type: none"><li>• Modern</li><li>• Contemporary</li></ul>	<b>VIEWS</b> <ul style="list-style-type: none"><li>• Panoramic views</li></ul>	<b>DISTANCE TO :</b> <div>Beach : 5 Km</div> <div>Airport: 20 Km</div> <div>Town center : 2 Km</div>	<b>ORIENTATION</b> <div>East</div>
<b>FURNITURE</b> <ul style="list-style-type: none"><li>• Not furnished</li></ul>	<b>PARKING</b> <div>Parking no Cars: 1</div>	<b>FLOORING</b> <ul style="list-style-type: none"><li>• Tile floors</li><li>• Stone floors</li></ul>	<b>KITCHEN</b> <ul style="list-style-type: none"><li>• Open kitchen</li><li>• Equipped kitchen</li><li>• Granite countertop</li></ul>
<b>GARDEN AND TERRACES</b> <ul style="list-style-type: none"><li>• Covered terrace</li><li>• Open terrace</li><li>• Landscaped</li><li>• Stone walls</li><li>• Private garden</li></ul>	<b>EXTRA</b> <ul style="list-style-type: none"><li>• Built in wardrobes</li><li>• Reinforced door</li><li>• Double glazed windows</li></ul>		

*"Experience our experience - Because you deserve the best"*