



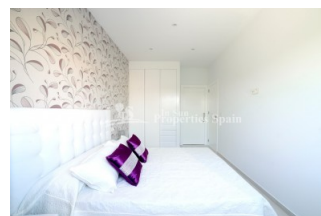
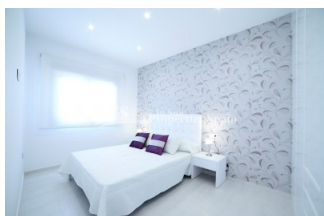
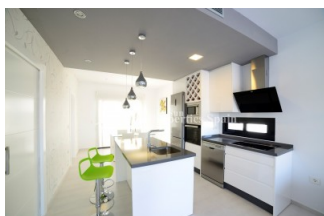
REF: # 4529

ORIHUELA COSTA (LO PAGAN-SAN PEDRO)



INFO

PRICE:	154.950 €
PROPERTY TYPE:	Apartment
LOCATION:	Orihuela Costa (Lo Pagan-San Pedro)
BEDROOMS:	2
BATHROOMS:	2
BUILD:	65 (m2)
PLOT:	-
TERRACE:	25 (m2)
YEAR:	
FLOOR:	-
OLD PRICE	-



DESCRIPTION

LAST TWO APARTMENTS REMAIN in SAN PEDRO DEL PINATAR, MAR MENOR. 24 modern 'maisonette' apartments with communal pool and gardens located close to the beaches of the Mar Menor. Location, Location, Location ... These modern, new build apartments are located in the popular coastal town of San Pedro, in a residential area just a short 500m walk to the beach, marina and town. These 2 bedroom, 2 bathroom (both en-suite) apartments offer plenty of space with a walk through lounge/kitchen and dining room. This is a 2 bedroom, 2 bathroom penthouse of 63m2 with 58m2 solarium and 7m2 terrace. They are designed for modern living with a fresh open feel and incorporate a central island, front and rear patio doors, dropped ceiling in the kitchen area and external storage solutions really make these stand out from the others. Delivey February 2018. Conveniently close to San Javier (Murcia) airport. The "Dos Mares" shopping centre is just on the doorstep, an excellent shopping area with supermarkets, restaurants, boutique shops and a cinema. The promenade of Santiago de la Ribera and Lo Pagan are a total delight throughout the day and evening, with countless restaurants to choose from, and some great little "tapas" bars just by the sea, or the ever popular marina. This area has a thalassotherapy spa and also offers a variety of sports activities, including seasonal water sports. With some particularly good golf courses very close by.

STYLE <ul style="list-style-type: none"> • Modern • Contemporary 	VIEWS <ul style="list-style-type: none"> • Panoramic views 	DISTANCE TO : <div>Beach : 500 m</div> <div>Airport: 20 Km</div> <div>Town center : 500 m</div>	ORIENTATION <div>South East West</div>
FURNITURE <ul style="list-style-type: none"> • Not furnished 	PARKING <div>Garage no Cars : 1</div> <div>Parking no Cars: 1</div>	FLOORING <ul style="list-style-type: none"> • Tile floors • Stone floors 	KITCHEN <ul style="list-style-type: none"> • Open kitchen • Equipped kitchen • Granite countertop
GARDEN AND TERRACES <ul style="list-style-type: none"> • Covered terrace • Open terrace • Landscaped • Stone walls • Private garden • Communal Garden 	EXTRA <ul style="list-style-type: none"> • Built in wardrobes • Reinforced door • Double glazed windows 		

"Experience our experience - Because you deserve the best"