



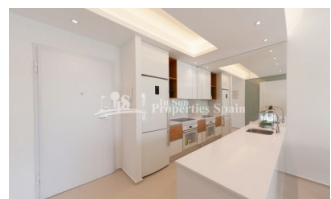
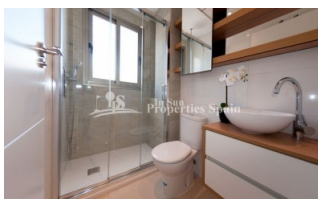
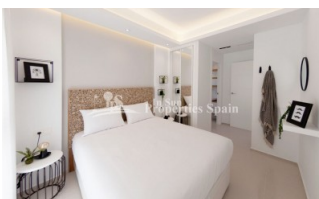
REF: # 5925

QUESADA-ROJALES (DONA PEPA)

Image not found  
[https://cmsinmo.com/imagenes/uploads/inmu/5/5925/allegra\\_residenciañ.jpg](https://cmsinmo.com/imagenes/uploads/inmu/5/5925/allegra_residenciañ.jpg)

#### INFO

PRICE:	222.000 €
PROPERTY TYPE:	Apartment
LOCATION:	Quesada-Rojales (Dona Pepa)
BEDROOMS:	3
BATHROOMS:	2
BUILD:	96 (m2)
PLOT:	-
TERRACE:	129 (m2)
YEAR:	
FLOOR:	-
OLD PRICE	-



## DESCRIPTION

Delivery September 2019. A STUNNING new development in DONA PEPA of 2 and 3 bedroom, 2 bathroom Ground and Top Floor Apartments. Ground floor of minimum 96m2 come with private 129m2 garden, from €222,000 and First Floor of minimum 96m2 come with private 75m2 roof solarium, from €248,000. These Apartments are from a well renowned builder with over 40 years experience, offering their same signature in terms of design, quality and finish. A home you will be proud to own! Doña Pepa is an elegant urbanization with wide avenues, wonderful views to the Natural Park and the salt lakes with a wide range of leisure activities and all the necessary amenities without having to take a car. It is only 30 minutes away from international airports, 35 minutes from Alicante and 5 minutes from the most beautiful beaches of the Costa Blanca. It is an area with good annual temperatures and a great atmosphere. The area of Doña Pepa has a widely varied infrastructure offering a multitude of shops, supermarkets, restaurants, cafes, medical centers, pharmacies, golf courses, banks, a 4\* Hotel with a Spa, a church, a social center, a cultural center, sports areas, an aquapark, a school, two natural parks, a religious center and high quality shopping complexes.

<b>STYLE</b> <ul style="list-style-type: none"> <li>• Modern</li> <li>• Contemporary</li> </ul>	<b>VIEWS</b> <ul style="list-style-type: none"> <li>• Panoramic views</li> </ul>	<b>AIRCONDITIONING</b> <ul style="list-style-type: none"> <li>• Central airconditioning</li> </ul>	<b>DISTANCE TO :</b> <div>Beach : +10 Km</div> <div>Airport: 30 Km</div> <div>Town center : 1 Km</div>
<b>ORIENTATION</b> <div>South East West</div>	<b>PARKING</b> <div>Parking no Cars: 1</div>	<b>MAIN LIVING AREA</b> <ul style="list-style-type: none"> <li>• Bathroom en-suite</li> </ul>	<b>FLOORING</b> <ul style="list-style-type: none"> <li>• Tile floors</li> <li>• Stone floors</li> </ul>
<b>KITCHEN</b> <ul style="list-style-type: none"> <li>• Open kitchen</li> <li>• Equipped kitchen</li> <li>• Granite countertop</li> </ul>	<b>GARDEN AND TERRACES</b> <ul style="list-style-type: none"> <li>• Covered terrace</li> <li>• Open terrace</li> <li>• Landscaped</li> <li>• Private garden</li> <li>• Communal Garden</li> </ul>	<b>EXTRA</b> <ul style="list-style-type: none"> <li>• Built in wardrobes</li> <li>• Reinforced door</li> <li>• Double glazed windows</li> </ul>	

*"Experience our experience - Because you deserve the best"*