



REF: # 10379

()



INFO

PRICE:	252.800 €
PROPERTY TYPE:	Apartment
LOCATION:	()
BEDROOMS:	2
Bathrooms:	2
Build:	78 (m2)
Plot:	-
Terrace:	17 (m2)
Year:	
Floor:	1
Old price	-



DESCRIPTION

NEW BUILD WONDERFUL APARTMENT, GATED URBANIZATION IN TORREVIEJA - ONLY 700M FROM THE BEACH. This modern 78m2 apartment consists of 2 bedrooms, 2 bathrooms, open plan kitchen / dining area, large private terraces of 17m2 with with sea views and front terraces facing the community areas!! The communal areas have many facilities including two swimming pools for adults, children's pool, children's area, gym, sports area, spa, bicycle parking and vehicle parking area. These apartments have quality finishes and materials and are in front of of Torremarina Shopping Center which has a Mercadona supermarket with many restaurants, cafes and shops. It is only 700 meters to La Mata Beach, 10 minutes walking. Torrevieja is a Spanish town in the province of Alicante, on the Costa Blanca. It is known for its typically Mediterranean climate and coastline. It has boardwalks with resorts along its sandy beaches. The small Museum of the Sea and Salt houses exhibitions on the fishing and salt history of the city. In the interior, the Lagunas de La Mata-Torrevieja Natural Park has trails and two salty lagoons, one pink and the other green. Alicante airport located 40 minutes away and Murcia airport about 1 hour away.

STYLE <ul style="list-style-type: none">• Modern	VIEWS <ul style="list-style-type: none">• Panoramic views• Sea views	AIRCONDITIONING <ul style="list-style-type: none">• Central airconditioning	DISTANCE TO : <div>Beach : 500 m</div> <div>Airport: 40 Km</div> <div>Town center : 7 Km</div>
PARKING <div>Parking no Cars: 1</div>	MAIN LIVING AREA <ul style="list-style-type: none">• Gym	FLOORING <ul style="list-style-type: none">• Tile floors• Stone floors	KITCHEN <ul style="list-style-type: none">• Open kitchen
GARDEN AND TERRACES <ul style="list-style-type: none">• Open terrace• Play Ground• Landscaped• Fenced• Stone walls• Electric gate• Communal Garden	HEATING <ul style="list-style-type: none">• Central gas heating	EXTRA <ul style="list-style-type: none">• Built in wardrobes• Reinforced door• Double glazed windows	



















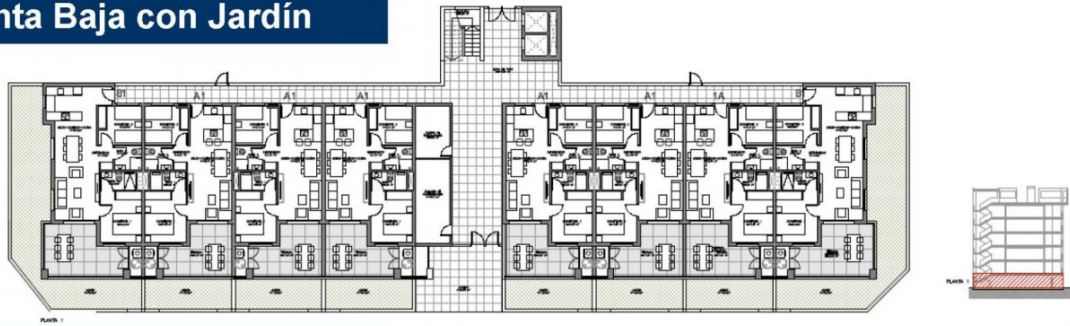




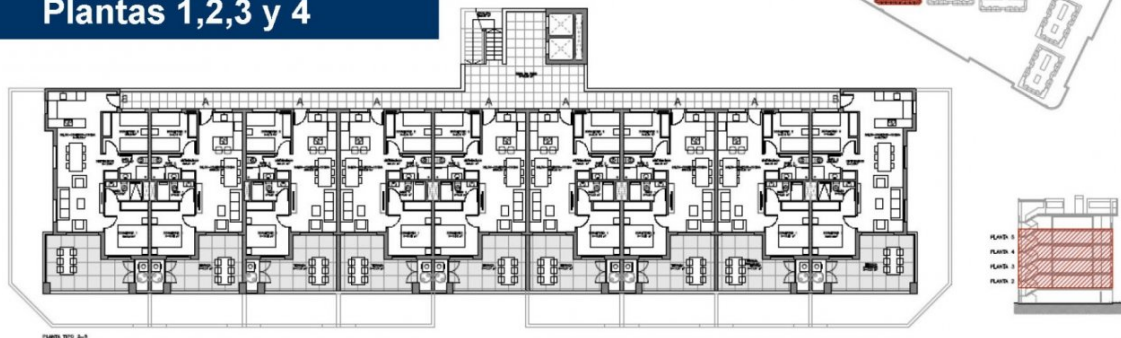


Bloque 1 – Plantas

Planta Baja con Jardín



Plantas 1,2,3 y 4







"Experience our experience - Because you deserve the best"