



REF: # 10380

()



#### INFO

**PRICE:** 510.400 €

**PROPERTY TYPE:** Penthouse

**LOCATION:** ()

**BEDROOMS:** 3

**Bathrooms:** 2

**Build:** 219 (m2)

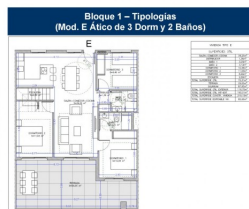
**Plot:** -

**Terrace:** -

**Year:** -

**Floor:** -

**Old price** -

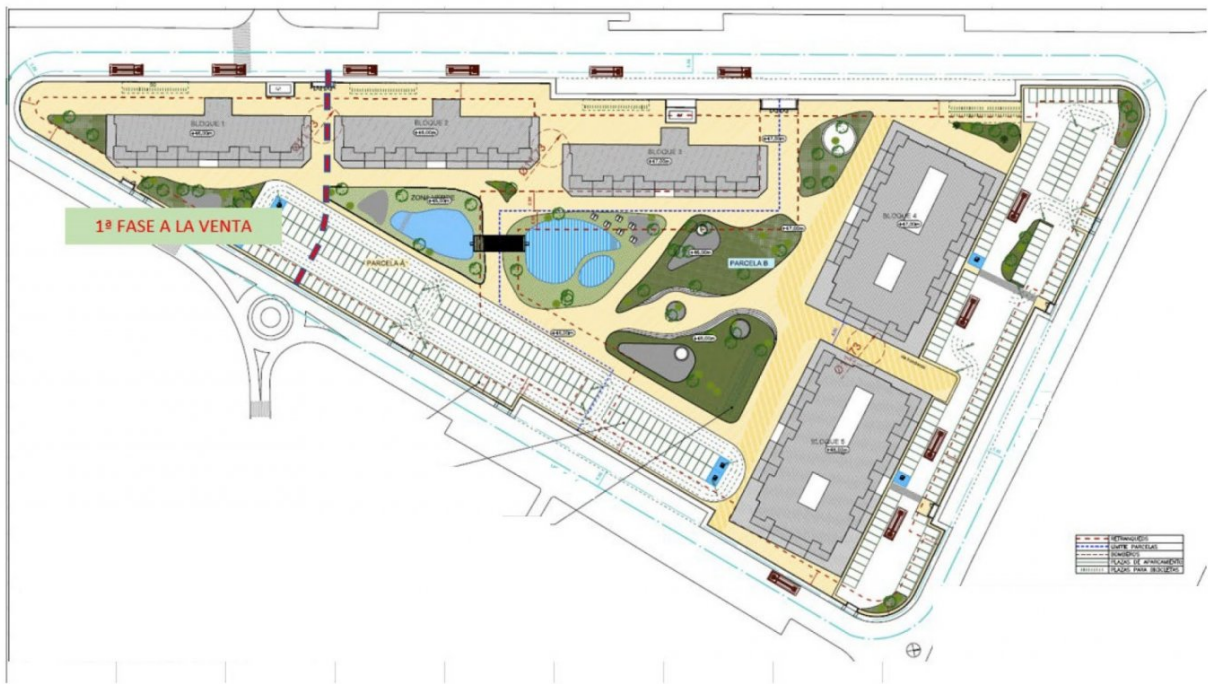


#### DESCRIPTION

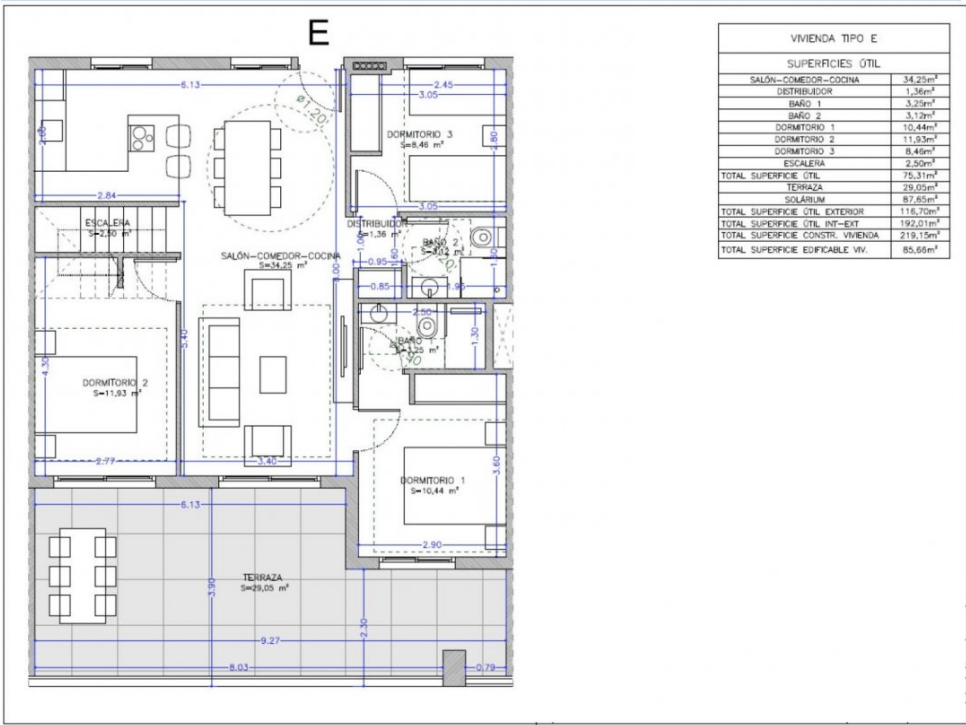
NEW BUILD GATED URBANIZATION IN TORREVIEJA ONLY 700M FROM THE BEACH. New Build residential complex of 362 apartments with large community areas in Torrevieja. You can choose between luxury 2 bedrooms and 2 bathrooms apartments , 3 bedrooms and 2 bathrooms penthouses with private solarium and 2 bedroom, 2 bathroom ground floor apartments with private garden. -Modern designs and quality finishes and materials -Almost all apartments will have sea views -All apartments comes with large front terraces facing the community areas -Communal areas with two swimming pools for adults, children's pool, children's area, gym, sports area and spa, bicycle parking and vehicle parking area -700 meters to La Mata Beach, 10 minutes walking -In front of Torremarina Shopping Center with Mercadona, restaurants, cafes and other shops Torrevieja is a Spanish town in the province of Alicante, on the Costa Blanca. It is known for its typically Mediterranean climate and coastline. It has boardwalks with resorts along its sandy beaches. The small Museum of the Sea and Salt houses exhibitions on the fishing and salt history of the city. In the interior, the Lagunas de La Mata-Torrevieja Natural Park has trails and two salty lagoons, one pink and the other green. Alicante airport located 40 minutes away and Murcia airport about 1 hour away.

<b>STYLE</b> <ul style="list-style-type: none"><li>• Modern</li><li>• Contemporary</li></ul>	<b>VIEWS</b> <ul style="list-style-type: none"><li>• Panoramic views</li></ul>	<b>AIRCONDITIONING</b> <ul style="list-style-type: none"><li>• Central airconditioning</li></ul>	<b>DISTANCE TO :</b> <div>Beach : 500 m</div> <div>Town center : 5 Km</div>
<b>PARKING</b> <div>Parking no Cars: 1</div>	<b>MAIN LIVING AREA</b> <ul style="list-style-type: none"><li>• Gym</li></ul>	<b>FLOORING</b> <ul style="list-style-type: none"><li>• Tile floors</li><li>• Stone floors</li></ul>	<b>KITCHEN</b> <ul style="list-style-type: none"><li>• Open kitchen</li></ul>
<b>GARDEN AND TERRACES</b> <ul style="list-style-type: none"><li>• Open terrace</li><li>• Play Ground</li><li>• Communal Garden</li></ul>	<b>HEATING</b> <ul style="list-style-type: none"><li>• Central gas heating</li></ul>	<b>EXTRA</b> <ul style="list-style-type: none"><li>• Built in wardrobes</li><li>• Reinforced door</li><li>• Double glazed windows</li></ul>	



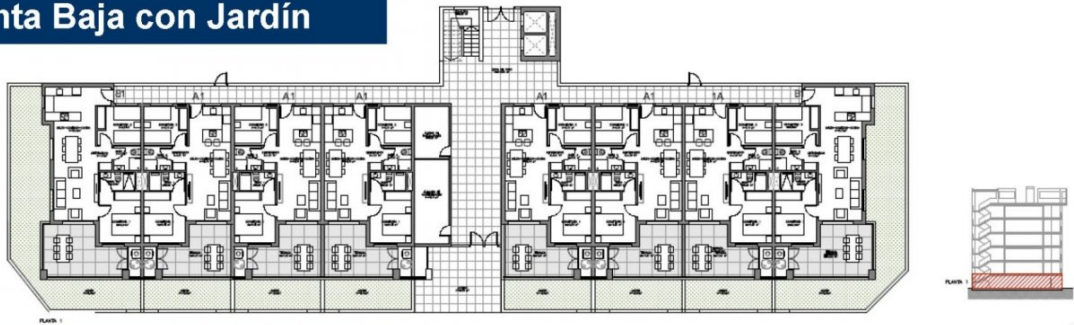


# Bloque 1 – Tipologías (Mod. E Ático de 3 Dorm y 2 Baños)

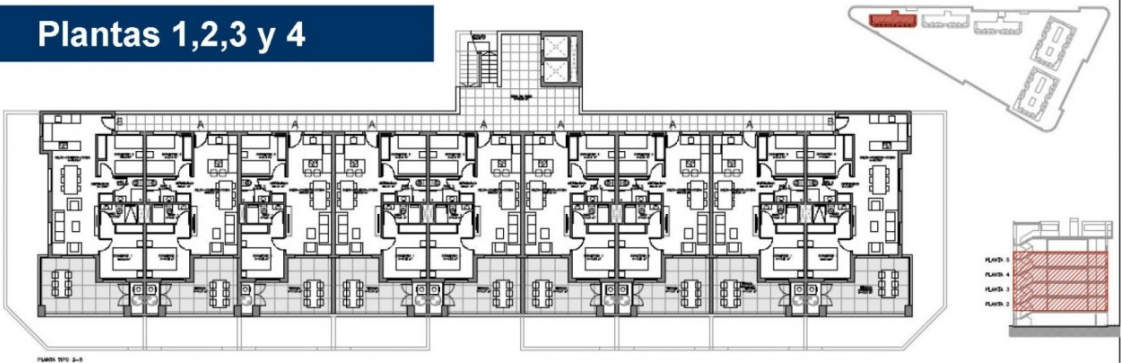


## Bloque 1 – Plantas

### Planta Baja con Jardín



### Plantas 1,2,3 y 4













*"Experience our experience - Because you deserve the best"*