



**In Sun
Properties Spain**
since 1999

REF: # 10402



INFO

PRICE: 210.000 €

PROPERTY TYPE: Apartment

LOCATION:

BEDROOMS: 2

Bathrooms: 2

Build: 71 (m2)

Plot: -

Terrace: 76 (m2)

Year: -

Floor: -

Old price -



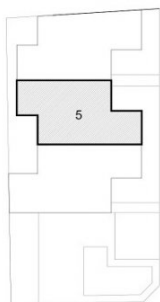
DESCRIPTION

NEW BUILD APARTMENT TOP FLOOR IN PILAR DE LA HORADADA with communal pool, only 5 minutes from the beach. This 71m2 Top floor apartment consists of 2 bedrooms, 2 bathrooms (one of them en suite), kitchen, living room, 13m2 terrace, 63m2 solarium and parking. There is an option of a storeroom at an extra cost. The apartment complex has a lovely communal area which includes a swimming pool and outside shower. There is a fully furnished kitchen that includes furniture in the lower and upper part, refrigerator, oven, induction hob, extractor and a washing machine or dishwasher. It has pre-installation of A / C through ducts, fully finished bathrooms including furniture and under-floor heating. There is also lighting included both indoors and outdoors. This residential complex is located only a few meters from all services and the centre. ? Pilar de la Horadada is a typical Spanish village in the most southern part of the Costa Blanca. The large main street has supermarkets, lots of shops, restaurants and bars and some lovely squares. The beautiful beaches of Torre de la Horadada and Mil Palmeras with fine sand promenade is just 5 minutes away. In Pilar de la Horadada there is also a well-developed cycling and walking path network, and there is also a large offer of various sports activities. Lo Romero 18 hole golf course is just a short drive from town. The Airports of Corvera (Murcia) and Alicante are respectively 40 and 55 minutes away.

STYLE	VIEWS	AIRCONDITIONING	DISTANCE TO :
<ul style="list-style-type: none">• Modern	<ul style="list-style-type: none">• Panoramic views	<ul style="list-style-type: none">• Central airconditioning	Beach : 4 Km Airport: 40 Km
PARKING	MAIN LIVING AREA	KITCHEN	GARDEN AND TERRACES
Parking no Cars: 1	<ul style="list-style-type: none">• Bathroom en-suite	<ul style="list-style-type: none">• Open kitchen• Equipped kitchen	<ul style="list-style-type: none">• Open terrace
HEATING	EXTRA		
<ul style="list-style-type: none">• Floor heating bathrooms	<ul style="list-style-type: none">• Reinforced door		





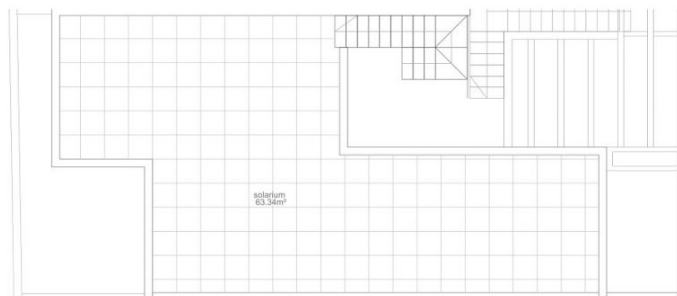


SUPERFICIES ÚTILES VIVIENDA 5

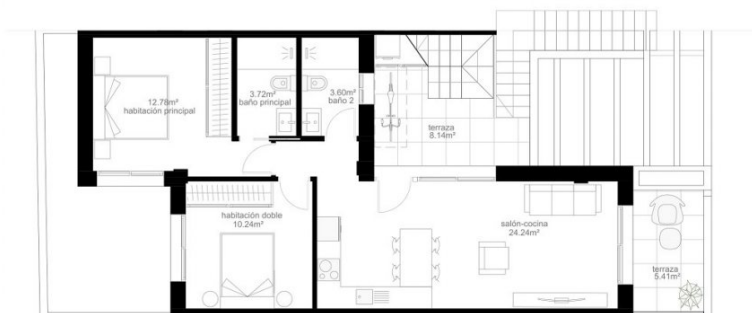
PLANTA PRIMERA	
salón-comedor-cocina	24.24m²
dormitorio	1.87m²
baño 1	3.88m²
dormitorio doble	12.24m²
habitación principal	12.78m²
baño principal	3.72m²
Superficie útil P1 TOTAL	58.69m²

SUPERFICIES CONSTRUIDAS VIVIENDA 5

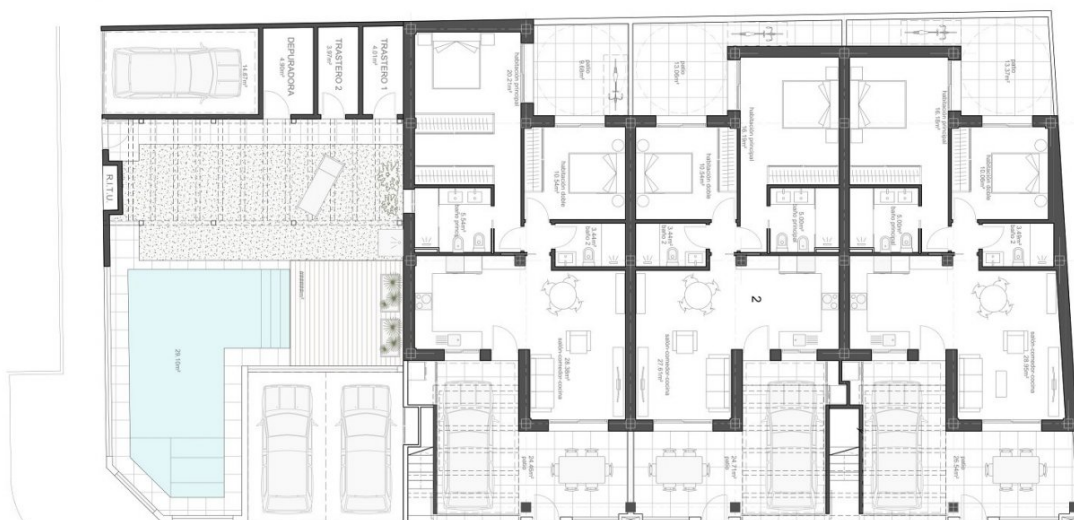
PLANTA PRIMERA	
Superficie construida P1 TOTAL	71.11m²



PLANTA SOLARIUM



VIVIENDA 5



PLANTA GENERAL





"Experience our experience - Because you deserve the best"