



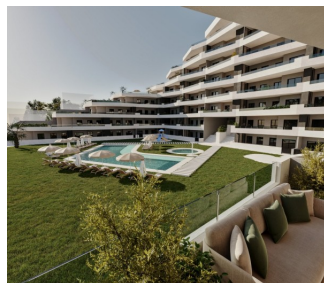
REF: # 10820

()



#### INFO

PRICE:	163.900 €
PROPERTY TYPE:	Penthouse
LOCATION:	()
BEDROOMS:	2
Bathrooms:	2
Build:	76 (m2)
Plot:	-
Terrace:	31 (m2)
Year:	-
Floor:	-
Old price	-



#### DESCRIPTION

**NEW BUILD PENTHOUSE APARTMENT IN SAN MIGUEL DE SALINAS** - with communal pool and gardens  
 New Build residential of 165 apartments of 2 and 3 bedrooms, distributed over 7 floors. Fully enclosed residential with communal swimming pools for adults and children, green areas, playground for children and an area for adults with bio-healthy circuit, located on the Costa Blanca in San Miguel de Salinas near golf courses, beach and shopping centres. All apartments comes with parking. An option storage room at an extra cost.  
 Quality specifications: - Fully fitted kitchen with filter group and induction hob. - Porcelanic floors. - Compact blinds. - White laminated wardrobes with mezzanine in bedrooms. - Pre-installation for split air conditioning in living room and bedroom. - Aerothermics. 70% energy saving. San Miguel de Salinas is a municipality in the Valencian Community, Spain. Located in the south of the province of Alicante, in the region of Vega Baja del Segura near the Region of Murcia. San Miguel de Salinas located close to the Las Colinas and Campoamor golf courses, offers exceptional views of the Torrevieja and La Mata lagoons. Alicante airport located 35 minutes drive away and Murcias Corvera airport is about 1 hour drive away.

<b>STYLE</b> <ul style="list-style-type: none"><li>• Modern</li></ul>	<b>VIEWS</b> <ul style="list-style-type: none"><li>• Panoramic views</li></ul>	<b>AIRCONDITIONING</b> <ul style="list-style-type: none"><li>• Central airconditioning</li></ul>	<b>DISTANCE TO :</b> <div>Beach : +10 Km</div> <div>Airport: 40 Km</div>
<b>FURNITURE</b> <ul style="list-style-type: none"><li>• Not furnished</li></ul>	<b>PARKING</b> <div>Parking no Cars: 1</div>	<b>FLOORING</b> <ul style="list-style-type: none"><li>• Tile floors</li><li>• Stone floors</li></ul>	<b>KITCHEN</b> <ul style="list-style-type: none"><li>• Open kitchen</li></ul>
<b>GARDEN AND TERRACES</b> <ul style="list-style-type: none"><li>• Open terrace</li><li>• Landscaped</li><li>• Fenced</li><li>• Communal Garden</li></ul>	<b>EXTRA</b> <ul style="list-style-type: none"><li>• Reinforced door</li><li>• Double glazed windows</li></ul>		



















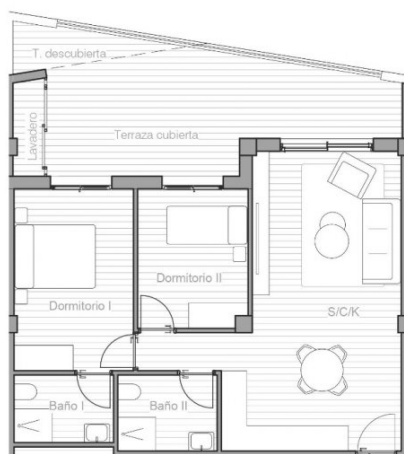






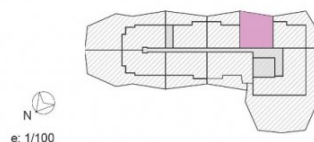






VIVIENDA 705	
Baño I	4.43 m <sup>2</sup>
Baño II	4.90 m <sup>2</sup>
Dormitorio I	13.95 m <sup>2</sup>
Dormitorio II	9.85 m <sup>2</sup>
Lavadero	2.21 m <sup>2</sup>
S/C/K	32.36 m <sup>2</sup>
Terraza cubierta	20.23 m <sup>2</sup>
Terraza descubierta	3.51 m <sup>2</sup>
TOTAL	91.45 m <sup>2</sup>

Nº 705 P7



*"Experience our experience - Because you deserve the best"*