

REF: # 10983

()



#### INFO

<b>PRICE:</b>	364.000 €
<b>PROPERTY TYPE:</b>	Apartment
<b>LOCATION:</b>	()
<b>BEDROOMS:</b>	2
<b>Bathrooms:</b>	2
<b>Build:</b>	64 (m2)
<b>Plot:</b>	-
<b>Terrace:</b>	17 (m2)
<b>Year:</b>	
<b>Floor:</b>	1
<b>Old price</b>	-



#### DESCRIPTION

**NEW BUILD RESIDENTIAL COMPLEX IN PUNTA PRIMA** New Build residential complex of 220 apartments in Punta Prima, Torrevejea. Apartments with 2 and 3 bedrooms and 2 bathrooms, open plan kitchen with living room, fitted wardrobes, all of them with large terraces. Ground floor apartments with garden and penthouses with solarium. All homes are delivered with an underground parking space. The residential has garden areas with swimming pools and paddle tennis court. Children can enjoy their own children's pool, as well as a children's play area. Punta Prima, located just 5 km from Torrevejea, is characterized by good communication and health infrastructures, the proximity to Alicante airport, and the number of services open throughout the year. Just 10 km away we can find the golf courses of Villamartín, Campoamor, Las Ramblas, Las Colinas and Lo Romero, as well as the commercial centres of La Zenia and Habaneras.

**STYLE**

- Modern

**VIEWS**

- Panoramic views

**AIRCONDITIONING**

- Central airconditioning

**DISTANCE TO :**

Beach : 50 m

Airport: 60 Km

Town center : 6 Km

**FURNITURE**

- Not furnished

**PARKING**

Parking no Cars: 1

**MAIN LIVING AREA**

- Gym

**FLOORING**

- Tile floors
- Stone floors

**KITCHEN**

- Open kitchen

**GARDEN AND TERRACES**

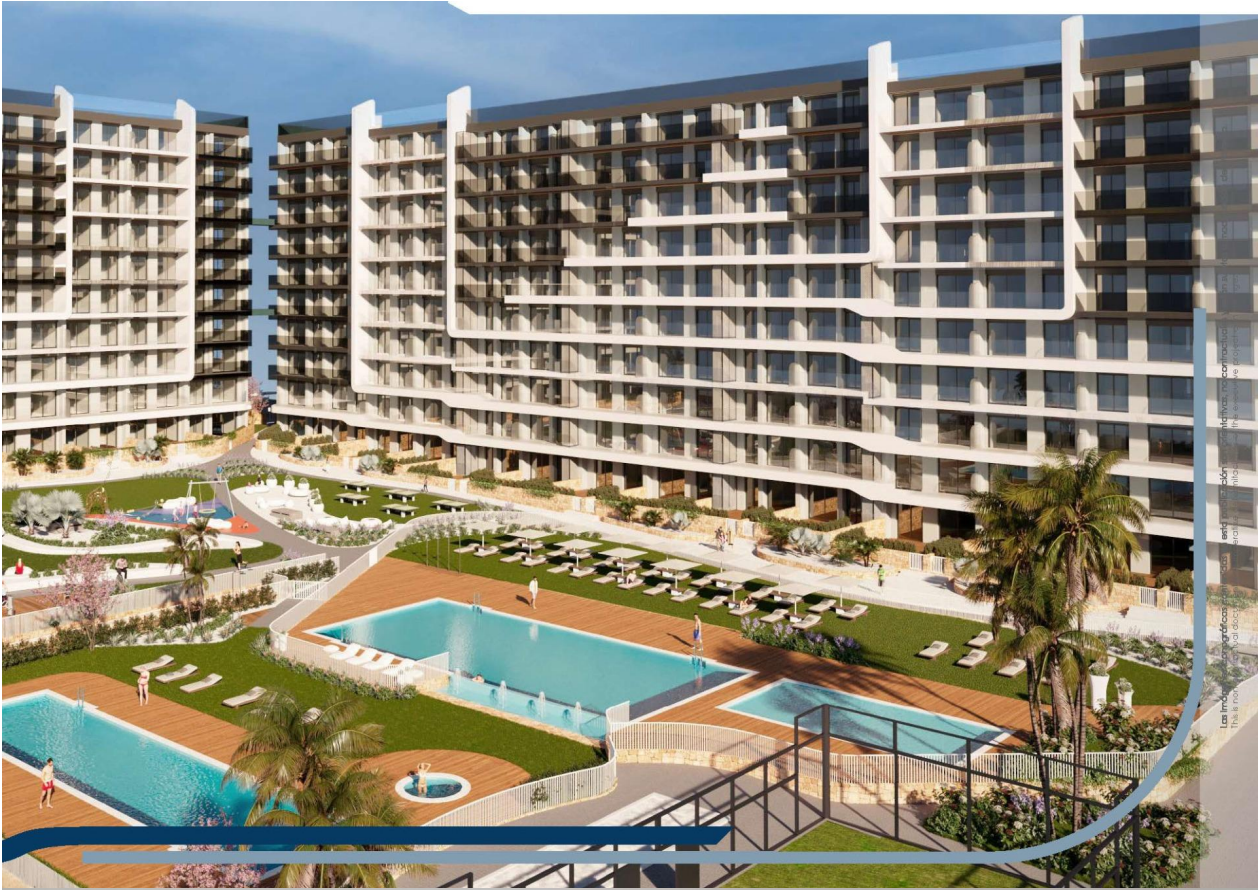
- Open terrace
- Fenced
- Communal Garden

**EXTRA**

- Reinforced door
- Double glazed windows
- Lift

PROPERTY GALLERY











Los planos presentados en este documento son meramente orientativos y no representan el proyecto definitivo. No se garantiza el cumplimiento de los plazos de ejecución del proyecto.











Los indicadores de superficie presentados en este documento son orientativos y no constituyen una oferta de venta. Para obtener más información, consulte el plan de detalle de la vivienda.

## VIVIENDA TIPO 2

ESCALERA 3-5 / STAIRCASE 3-5  
PLANTAS 1-8 / FLOORS 1-8

### SUPERFICIES ÚTILES / USEFUL AREA

SUPERFICIES ÚTILES INTERIORES / USEFUL INTERIOR AREA		
1	ACCESO / ACCESS	3.61 m <sup>2</sup>
2	PASO / HALLWAY	2.23 m <sup>2</sup>
3	ESTAR-COM.-COCINA / KITCHEN-LIVING	29.44 m <sup>2</sup>
4	TENDEDERO (100%) / UTILITY ROOM	2.16 m <sup>2</sup>
5	DORMITORIO 01 / BEDROOM 01	11.67 m <sup>2</sup>
6	DORMITORIO 02 / BEDROOM 02	6.72 m <sup>2</sup>
7	BAÑO 01 / BATHROOM 01	3.52 m <sup>2</sup>
8	BAÑO 02 / BATHROOM 02	3.68 m <sup>2</sup>
		<b>63.03 m<sup>2</sup></b>

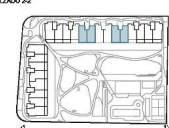
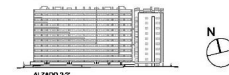
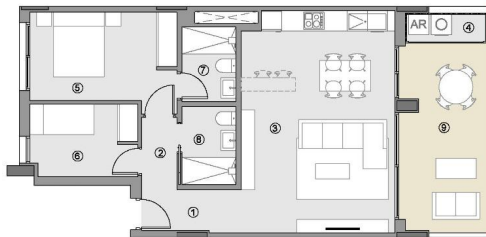
### SUPERF. ÚTILES EXTERIORES / USEFUL EXTERIOR AREA

9	TERRAZA 01 (100%) / TERRACE 01	14.72 m <sup>2</sup>
		<b>14.72 m<sup>2</sup></b>

**SUP. ÚTIL TOTAL/TOTAL USEFUL AREA 77.75 m<sup>2</sup>**

### SUPERFIC. CONSTRUIDAS / BUILT AREA

SUP. CONST. INTERIOR / INTERIOR BUILT AREA		70.11 m <sup>2</sup>
SUP. CONST. EXT. (50%) / EXT. BUILT AREA		8.41 m <sup>2</sup>
SUP. CONST. J/C / BUILT AREA OF SHARED AREAS		10.31 m <sup>2</sup>
<b>SUP. CONST. TOTAL/TOT. BUILT AREA</b>		<b>88.83 m<sup>2</sup></b>



0 1 2 3 4 5 m E:1/125

PLANO PROVISIONAL









*"Experience our experience - Because you deserve the best"*