



REF: # 11192



INFO

PRICE: 2.250.000 €

PROPERTY TYPE: Villa

LOCATION:

BEDROOMS: 4

Bathrooms: 4

Build: 450 (m2)

Plot: 424 (m2)

Terrace: -

Year: -

Floor: -

Old price -



DESCRIPTION

Construction of 10 semi-detached houses on the beachfront in Muchavista. Its exclusive location on the first line of the San Juan-Muchavista beach makes it one of the few plots where you can boast of the privilege of living face to face with the Mediterranean Sea. Its contemporary design facing the bay, the high quality of the selected materials and the uniqueness of the elements that it includes make it unique. Its enclave in a fully consolidated area provides it with all the necessary services. Quick access to public transport, schools, hospitals, leisure, shopping, golf, airport, etc ... It is, therefore, an exclusive project of high standing in which all the homes are located on the strict seafront. It is located in one of the vertices of the promenade and with a south orientation that allows you to enjoy a complete view of the bay. It has immediate access to all the services of one of the best beaches with a Blue Flag fully integrated in the metropolitan area: Sports: Windsurfing, paddle surfing, sailing, canoeing, beach volleyball, golf courses ... Leisure: Restaurants, beach bars, shops, shopping centers, yacht clubs ... Hospital: Several outpatient clinics and hospitals within 5 min. Transport: Tram line (TRAM), bus and access to the main communication routes. Airport: Its strategic location allows you to reach the Alicante-Elche international airport in less than 20 min. Educational: Wide and diverse educational offer in its surroundings. All this allows us to live in a paradisiacal environment where you can enjoy all the services of a big city like Alicante and the nuances and tranquility of a traditional tourist town like El Campello.

VIEWS

- Panoramic views

**GARDEN AND
TERRACES**

- Private garden

EXTRA

- Outdoor jacuzzi

PROPERTY GALLERY















Avance de Obra Enero 2021

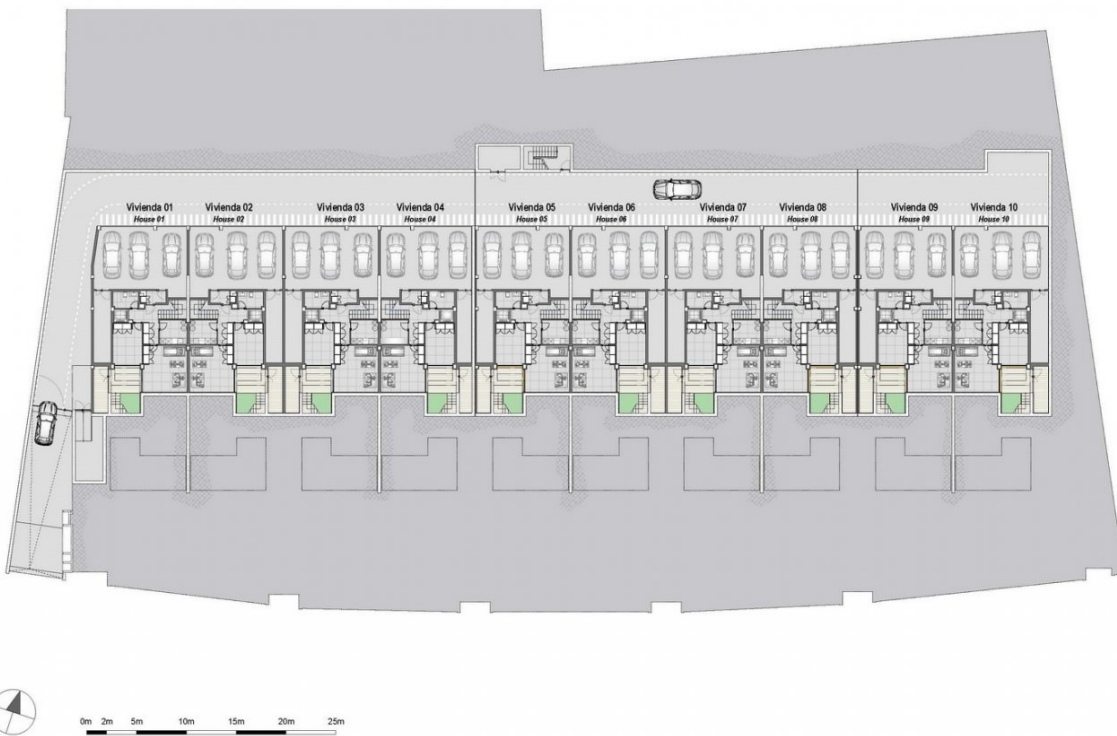
Con la participación de:  **Santander**



FEBRERO 2019. El proyecto puede sufrir modificaciones por razones administrativas, legales y/o de la dirección facultativa.
FEBRUARY 2019. The development may be subject to changes due to administrative or legal reasons, and/or by decision of the management.



VIVIENDA 02
Planta General - Parcelario
HOUSE 02
Ground floor - P&A



FEBRERO 2019. El proyecto puede sufrir modificaciones por razones administrativas, legales y/o de la dirección facultativa.
FEBRUARY 2019. The development may be subject to changes due to administrative or legal reasons, and/or by decision of the management.



VIVIENDA 02
Planta General - Aparcamiento
HOUSE 02
Lower Ground floor - Garage



VIVIENDA 02
Planta Sótano - Planta Baja - Planta Primera
HOUSE 02
Lower Ground floor - Ground floor - 1st floor

EBRERO 2019. El proyecto puede sufrir modificaciones por exigencias administrativas, legales y/o de la dirección facultativa.



VIVIENDA 02
Planta Segunda - Planta Solarium
HOUSE 02
2nd floor - Solarium floor

SUPERFICIES CONSTRUIDAS HOTEL BUA AREA		\$24.30 m ²
Garaje (estacionamiento)		
Planta Planta 1 (lower ground)		\$149.30 m ²
Planta Planta 2 (lower ground)		\$18.58 m ²
Garage parking (lower ground)		\$3.50 m ²
PP - Zonas comunes garaje (Garage common area)		\$730.00 m ²
Tienda (Storage room)		\$148.00 m ²
Sala de depósitos (Storage pool (storage))		\$19.75 m ²
Vivienda (Residential)		
Planta Planta 3 (lower ground)		\$262.34 m ²
Planta Planta 4 (lower)		\$19.85 m ²
Planta Planta 5 (lower)		\$45.26 m ²
Planta Planta 6 (lower)		\$43.26 m ²
Elementos de infraestructura (Infrastructure elements)		
Plata, terraza y escalera en el (Patio, terrace and staircase)		\$102.00 m ²
Pedregal (Lower ground)		\$14.72 m ²
Patio central (lower ground)		\$6.81 m ²
Tienda (Storage)		\$1.80 m ²
Sala de depósitos (Storage room)		\$4.80 m ²
Sala de depósitos		\$29.00 m ²

SUPERFICIES TILES (FLOOR AREA)		445 sq ft
Slab area		167.01 sq ft
Plata Slotta (slate granite)		167.01 sq ft
Grange (granite) (slate granite)		66.06 sq ft
Slab (slate granite) (slate granite)		66.06 sq ft
Trellis (slate granite)		12.79 sq ft
Slab (granite) (slate granite)		12.79 sq ft
Slab (granite) (slate granite)		12.79 sq ft
Wyndia (slate granite)		207.84 sq ft
Plata Slotta (slate granite)		66.06 sq ft
Bolton (slate)		66.06 sq ft
Grange (slate) (slate granite)		4.38 sq ft
Quartz (granite) (slate granite)		4.38 sq ft
Granite (slate)		26.06 sq ft
Marble (slate)		3.28 sq ft
Porcelain (slate)		7.92 sq ft
Exterior (slate)		5.57 sq ft
Plata Slotta (slate granite)		79.29 sq ft
Grange (slate)		14.38 sq ft
Slab (granite) (slate granite)		14.38 sq ft
Slab (slate) (slate granite)		2.92 sq ft
Grange (slate) (slate granite)		2.92 sq ft
Grange (slate)		2.92 sq ft
Grange (slate)		5.79 sq ft
Exterior (slate)		39.29 sq ft
Plata Slotta (slate granite)		12.79 sq ft
Hudson (slate) (slate granite)		12.79 sq ft
Hudson (slate) (slate granite)		12.79 sq ft
Grange (slate) (slate granite)		4.38 sq ft
Grange (slate)		4.38 sq ft
Exterior (slate)		5.57 sq ft
Plata Slotta (slate granite)		29.29 sq ft
Hudson (slate) (slate granite)		13.82 sq ft
Marble (slate granite)		7.92 sq ft
Grange (slate) (slate granite)		3.70 sq ft
Grange (slate)		4.38 sq ft
Elementos decorativos (slate granite)		90.42 sq ft
Elementos decorativos y modernos (slate granite, marble and natural stone)		90.42 sq ft
Plata (slate granite) (slate granite)		15.23 sq ft
Plata (slate granite) (slate granite)		15.23 sq ft
Plata (slate granite) (slate granite)		22.29 sq ft
Plata (slate granite) (slate granite)		4.38 sq ft
Solution (slate granite)		42.73 sq ft

FEBRUARY 2019. (I) proyecto pueden sufrir modificaciones por exigencias administrativas, legales y/o de la dirección facultativa. The development may be subject to changes due to administrative or legal reasons, and/or by decision of the management.



"Experience our experience - Because you deserve the best"