



**In Sun  
Properties Spain**  
since 1999

REF: # 11339



#### INFO

**PRICE:** 333.000 €

**PROPERTY TYPE:** Penthouse

**LOCATION:**

**BEDROOMS:** 2

**Bathrooms:** 1

**Build:** 76 (m2)

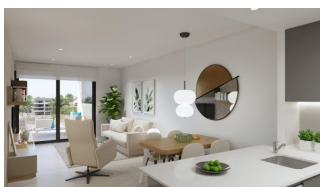
**Plot:** -

**Terrace:** -

**Year:** -

**Floor:** -

**Old price** -



#### DESCRIPTION

**NEW BUILD RESIDENTIAL COMPLEX IN PLAYA FLAMENCA** New Build apartments in Playa Flamenca, 350m from the Zenia Boulevard Shopping Centre and 600m from the beach. Beautiful apartments by the sea in a residential complex with large common areas including parks, swimming pools, gym, sauna and pedestrian paths. The residential has apartments with 2 and 3 bedrooms (with 1 or 2 bathrooms) with air conditioning through ducts and underfloor heating in the bathrooms. Private garden and large porches on the ground floor; bright and spacious terraces on intermediate floors and magnificent private solariums for the third and last floors. All with parking space included in the price. Residential that enjoys an exceptional situation next to Flamenca beach, shopping centers and an excellent connection with the AP-7 highway. The opportunity to live near the sea in an idyllic setting, designed to offer a sustainable and healthy lifestyle, which exudes open spaces, green areas and architectural harmony. Its design includes facades with planters, large flowerpots, stone porticoes that complete a scenic route full of native flora in which there is no lack of a lake, fountains, a swimming pool with an integrated chill out lounge area, jacuzzis, and an aquatic children's play area. A glass-enclosed gym with panoramic views over the lake, an exercise room and a Finnish sauna complete the extensive list of amenities. Playa Flamenca is a quiet beach-side residential urbanization, located 40 minutes drive from Alicante airport and 15 minutes drive from the bustling town of Torrevieja.

**VIEWS**

- Panoramic views























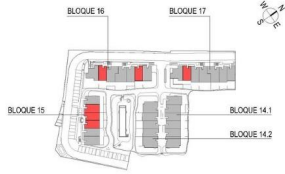




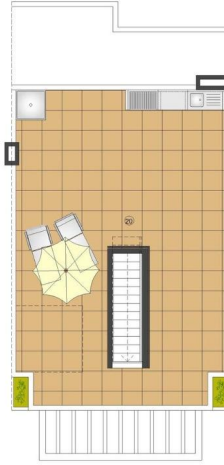
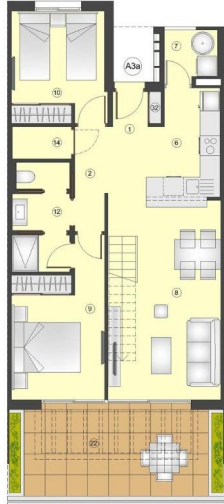




NOTA: La Terraza y jardinerías pueden variar en función de la ubicación de la vivienda. Ver Planos de Planta.  
NOTE: The Terrace and jardinerías may vary depending on the location of the house. See top view plans.  
NOTE: Le Terrasse et jardinières peuvent varier en fonction de l'emplacement du logement. Voir plans d'étage.



#	SUPERFICIES ÚTILES / FLOOR AREA / SURFACES UTILES	TIPO TYPE A3a
1	VESTIBULO / HALL / ENTRÉE	2.86 m <sup>2</sup>
2	PASO 1 / CORRIDOR 1 / CIRCULATION 1	3.84 m <sup>2</sup>
6	COCINA / KITCHEN / CUISINE	6.86 m <sup>2</sup>
7	GALERÍA / GALLERY / GALLERIE	2.48 m <sup>2</sup>
8	SALÓN COMEDOR / LIVING-DINING ROOM / SALON-SALLE À MANGER	21.21 m <sup>2</sup>
9	DORMITORIO 1 / BEDROOM 1 / CHAMBRE 1	11.53 m <sup>2</sup>
10	DORMITORIO 2 / BEDROOM 2 / CHAMBRE 2	9.48 m <sup>2</sup>
12	BANÍO 1 / BATHROOM 1 / SALLE DE BAINS 1	5.31 m <sup>2</sup>
14	TRASTERO / STOREROOM / CAVE	1.72 m <sup>2</sup>
15	ZAPATERO / SHOE LOCKER / PLACARD À CHAUSSURES	0.38 m <sup>2</sup>
16	TOTAL SUP. ÚTILES / TOTAL FLOOR AREA / TOTAL SURFACES UTILES	64.79 m <sup>2</sup>
17	SUP. CONSTRUIDA INTERIOR / BUILT INTERIOR AREA / SURFACE CONSTRUITE INTERIEUR	75.94 m <sup>2</sup>
18	SUP. CONSTRUIDA TERRAZA DESCUBIERTA / BUILT OPEN TERRACE AREA / SURFACE CONSTRUITE TERRASSE NON COUVERTE	18.99 m <sup>2</sup>
19	SUP. CONSTRUIDA SOLARIUM / BUILT SOLARIUM AREA / SURFACE CONSTRUITE SOLARIUM	64.13 m <sup>2</sup>
20	TOTAL SUP. CONSTRUIDA PRIVADA / TOTAL BUILT PRIVATE AREA / TOTAL SURFACE CONSTRUITE PRIVEE	159.06 m <sup>2</sup>



	A3b	A3c	A3d
VARIEDAD DE TIPOS POR TERRAZAS			
TOTAL SUP. ÚTILES	64.79 m <sup>2</sup>	64.79 m <sup>2</sup>	64.79 m <sup>2</sup>
SUP. CONSTRUIDA INTERIOR	75.94 m <sup>2</sup>	75.94 m <sup>2</sup>	75.94 m <sup>2</sup>
20 SUP. CONSTRUIDA SOLARIUM	64.13 m <sup>2</sup>	64.13 m <sup>2</sup>	64.13 m <sup>2</sup>
22 SUP. CONSTRUIDA TERRAZA DESCUBIERTA	18.99 m <sup>2</sup>	18.99 m <sup>2</sup>	18.99 m <sup>2</sup>
TOTAL SUP. CONSTRUIDA PRIVADA	159.06 m <sup>2</sup>	159.06 m <sup>2</sup>	159.06 m <sup>2</sup>

## TIPO/TYPE A3a

Apartamento, 2 Dormitorios + 1 Baño - Planta Tercera + Solarium  
Apartment, 2 Bedrooms + 1 Bathroom - Third Floor + Solarium  
Appartement, 2 Chambres + 1 Salle de bains - Troisième étage + Solarium

0 1 m 3 m 5 m

Enero/January/Janvier 2023

Plano sujeto a posibles modificaciones por razones o exigencias de índole técnica o jurídica. Las superficies son aproximadas. Cocina y amueblamiento orientados, sin valor contractual.  
Plan soumis à modifications en fonction des besoins ou exigences d'ordre technique ou juridique. Les surfaces sont approximatives. Cuisine et aménagement indicatifs, sans valeur contractuelle.





*"Experience our experience - Because you deserve the best"*