



REF: # 11349

()



INFO

PRICE: 361.000 €

PROPERTY TYPE: Apartment

LOCATION: ()

BEDROOMS: 2

Bathrooms: 2

Build: 80 (m2)

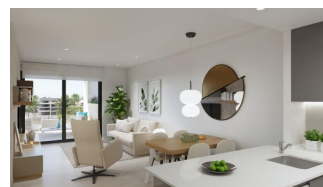
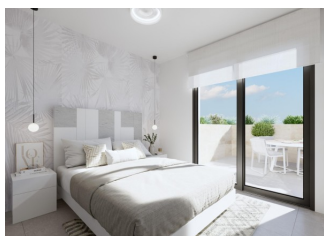
Plot: -

Terrace: 20 (m2)

Year:

Floor: -

Old price -



DESCRIPTION

NEW BUILD RESIDENTIAL COMPLEX IN PLAYA FLAMENCA New Build apartments in Playa Flamenca, 350m from the Zenia Boulevard Shopping Centre and 600m from the beach. Beautiful apartments by the sea in a residential complex with large common areas including parks, swimming pools, gym, sauna and pedestrian paths. The residential has apartments with 2 and 3 bedrooms (with 1 or 2 bathrooms) with air conditioning through ducts and underfloor heating in the bathrooms. Private garden and large porches on the ground floor; bright and spacious terraces on intermediate floors and magnificent private solariums for the third and last floors. All with parking space included in the price. Residential that enjoys an exceptional situation next to Flamenca beach, shopping centers and an excellent connection with the AP-7 highway. The opportunity to live near the sea in an idyllic setting, designed to offer a sustainable and healthy lifestyle, which exudes open spaces, green areas and architectural harmony. Its design includes facades with planters, large flowerpots, stone porticoes that complete a scenic route full of native flora in which there is no lack of a lake, fountains, a swimming pool with an integrated chill out lounge area, jacuzzis, and an aquatic children's play area. A glass-enclosed gym with panoramic views over the lake, an exercise room and a Finnish sauna complete the extensive list of amenities. Playa Flamenca is a quiet beach-side residential urbanization, located 40 minutes drive from Alicante airport and 15 minutes drive from the bustling town of Torrevieja. PRICE FROM 361.000.-€ TO 398.000.-€

STYLE <ul style="list-style-type: none">• Modern• Contemporary	VIEWS <ul style="list-style-type: none">• Panoramic views	AIRCONDITIONING <ul style="list-style-type: none">• Central airconditioning	DISTANCE TO : <div>Beach : 500 m</div> <div>Airport: 40 Km</div> <div>Town center : 100 m</div>
ORIENTATION <div>South west</div>	MAIN LIVING AREA <ul style="list-style-type: none">• Storage• Sauna• Bathroom en-suite• Gym	FLOORING <ul style="list-style-type: none">• Tile floors	KITCHEN <ul style="list-style-type: none">• Open kitchen• Equipped kitchen• Granite countertop
GARDEN AND TERRACES <ul style="list-style-type: none">• Covered terrace• Open terrace• Exterior lights• Play Ground• Fenced• Stone walls• Electric gate• Communal Garden	HEATING <ul style="list-style-type: none">• Central electric heating	EXTRA <ul style="list-style-type: none">• Indoor jacuzzi• Built in wardrobes• Reinforced door• Double glazed windows• Door bell with camera	

PROPERTY GALLERY









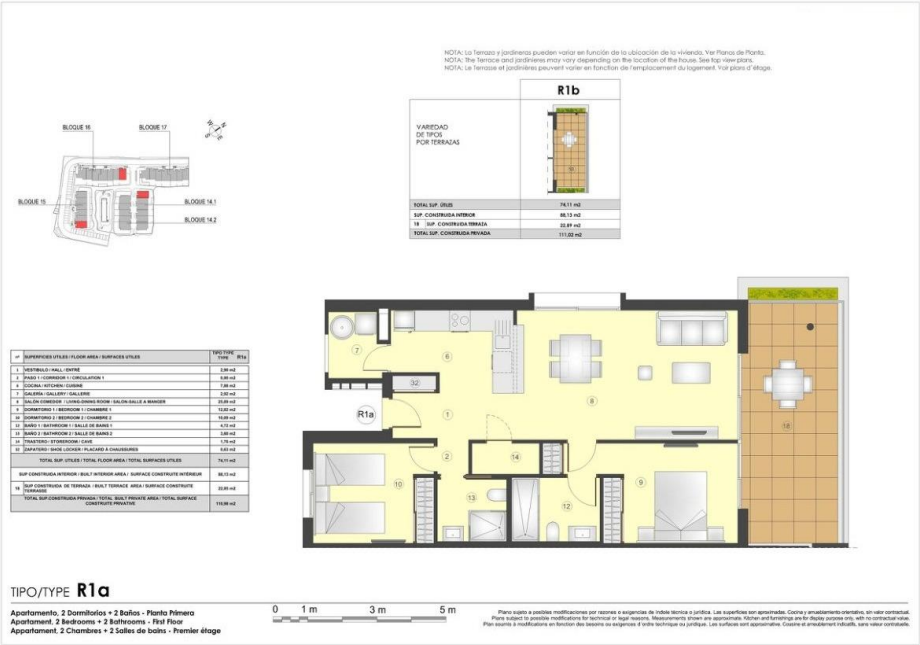








2 Bedrooms Apartment R1b Floor







"Experience our experience - Because you deserve the best"