



**In Sun
Properties Spain**
since 1999

REF: # 11376

()



INFO

PRICE: 229.000 €

PROPERTY TYPE: Apartment

LOCATION: ()

BEDROOMS: 2

Bathrooms: 2

Build: 66 (m2)

Plot: -

Terrace: 3 (m2)

Year: -

Floor: -

Old price -



DESCRIPTION

NEW BUILD APARTMENTS IN THE CENTER OF TORREVIEJA, only 700m from the beach! This new build residential of 12 exclusive 1/2 bedrooms, 1/2 bathrooms apartments and penthouses have open plan kitchens and living areas, fitted wardrobes, fully equipped bathrooms with underfloor heating, motorized aluminum blinds and Armoured entrance door with security lock. They are fitted with Pre-installation of air conditioning and heating. The residential complex is of modern design and has high quality finishes throughout and a beautiful communal solarium. Torrevieja is a Spanish town in the province of Alicante, on the Costa Blanca. It is known for its typically Mediterranean climate and coastline. It has boardwalks with resorts along its sandy beaches. The small Museum of the Sea and Salt houses exhibitions on the fishing and salt history of the city. In the interior,

the Lagunas de La Mata-Torrevieja Natural Park has trails and two salty lagoons, one pink and the other green.
Alicante airport located 40 minutes away and Murcia airport about 1 hour away

STYLE	VIEWS	AIRCONDITIONING	DISTANCE TO :
<ul style="list-style-type: none">• Modern• Contemporary	<ul style="list-style-type: none">• Panoramic views	<ul style="list-style-type: none">• Central airconditioning	Beach : 1 Km <hr/> Airport: 40 Km <hr/> Town center : 50 m
FURNITURE	FLOORING	KITCHEN	EXTRA
<ul style="list-style-type: none">• Not furnished	<ul style="list-style-type: none">• Tile floors• Stone floors	<ul style="list-style-type: none">• Open kitchen	<ul style="list-style-type: none">• Outdoor jacuzzi• Built in wardrobes• Alarm• Reinforced door• Double glazed windows















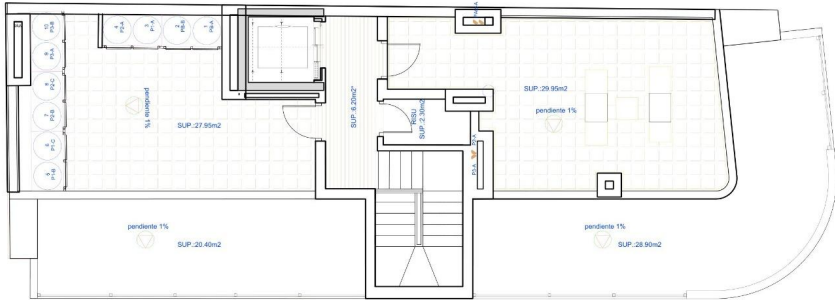
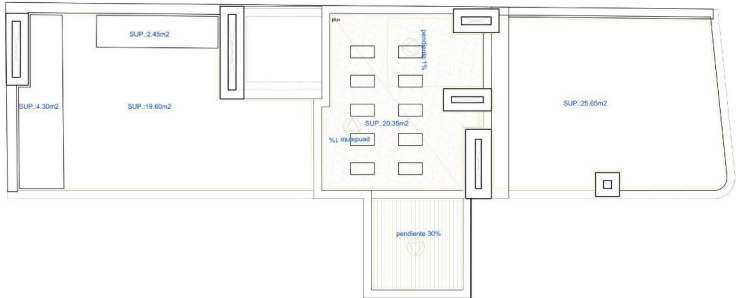


CUADRO DE SUPERFICIES SUPERFICIE VIVIENDA TIPO (PLANTA 3)		
	VIV-A	VIV-B
SALON COMEDOR COCINA	23,00 m2	20,20 m2
DORMITORIO-1	10,00 m2	10,10 m2
DORMITORIO-2	8,35 m2	6,60 m2
BAÑO-1	3,00 m2	3,95 m2
BAÑO-2	3,30 m2	4,30 m2
TERRAZAS AL 100%	5,55 m2	2,70 m2
SUP. ÚTIL VIVIENDA	53,20 m2	47,85 m2
SUP. CONSTR. VIVIENDA (INCLUIDAS TERRAZAS AL 100%)	57,10 m2	57,50 m2
SUP. CONSTRUIDA COMUNES	17,85 m2	9,35 m2
SUPERFICIE CONSTRUIDA TOTAL	74,95 m2	66,85 m2



A3-41-0001-10

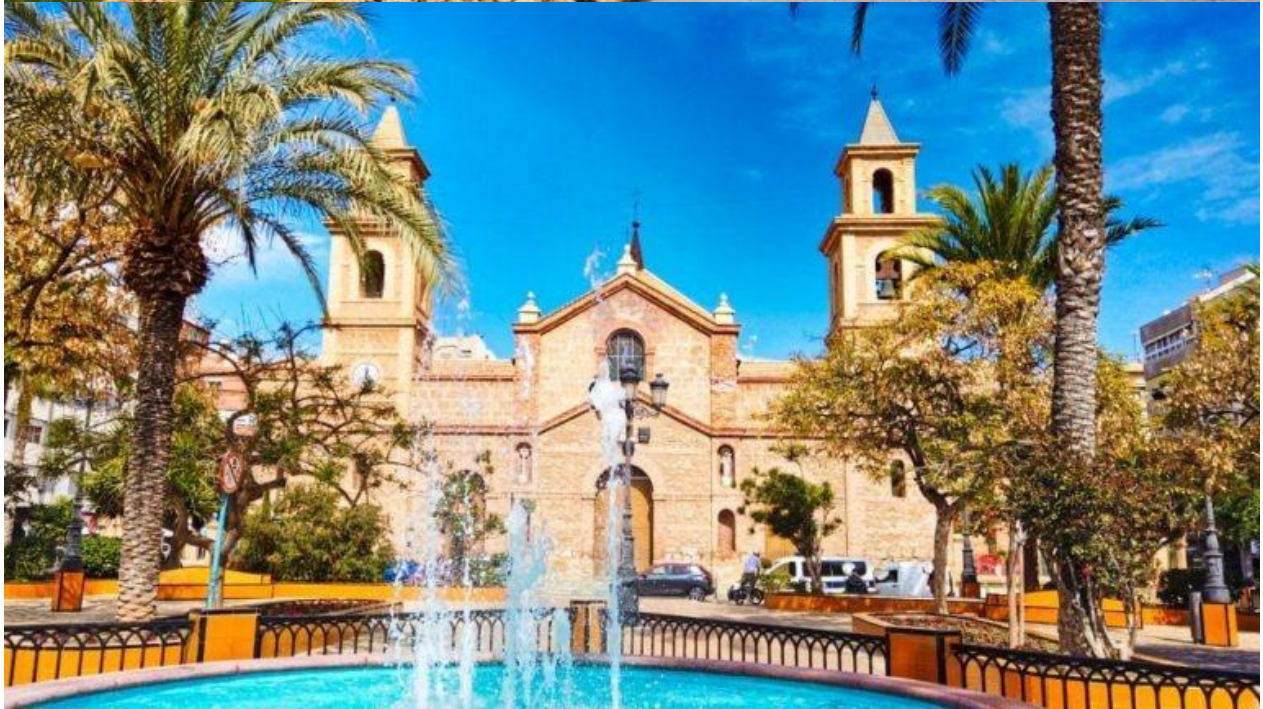
PLANTA TORREON



A3-41-0001-10











"Experience our experience - Because you deserve the best"