



**In Sun  
Properties Spain**  
since 1999

REF: # 11378



#### INFO

**PRICE:** 159.000 €

**PROPERTY TYPE:** Apartment

**LOCATION:**

**BEDROOMS:** 1

**Bathrooms:** 1

**Build:** 35 (m2)

**Plot:** -

**Terrace:** 2 (m2)

**Year:** -

**Floor:** -

**Old price** -



#### DESCRIPTION

**NEW BUILD APARTMENTS IN TORREVIEJA** New Build apartments and penthouses in Torrevieja. New Build residential of 12 exclusive 1 and 2 bedrooms, 1 and 2 bathrooms apartments and penthouses, with open plan kitchen and living area, large, fitted wardrobes, fully equipped bathrooms with underfloor heating. All motorised aluminium blinds. Armoured entrance door with security lock. Pre-installation of air conditioning and heating. New Build residential complex with modern design and high quality finishes has a beautiful communal solarium. Torrevieja is a Spanish town in the province of Alicante, on the Costa Blanca. It is known for its typically Mediterranean climate and coastline. It has boardwalks with resorts along its sandy beaches. The small Museum of the Sea and Salt houses exhibitions on the fishing and salt history of the city. In the interior, the

Lagunas de La Mata-Torrevieja Natural Park has trails and two salty lagoons, one pink and the other green.  
Alicante airport located 40 minutes away and Murcia airport about 1 hour away

**VIEWS**

- Panoramic views

**AIRCONDITIONING**

- Central airconditioning

**EXTRA**

- Lift





















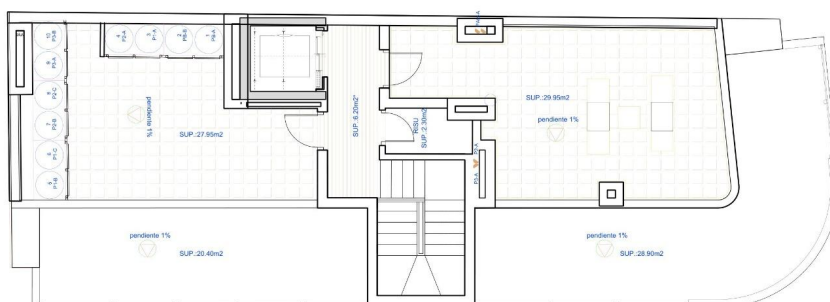


CUADRO DE SUPERFICIES SUPERFICIE VIVIENDA TIPO	
	<b>VIV-B</b>
SALON COMEDOR COCINA	19,00 m2
DORMITORIO-1	10,50 m2
DORMITORIO-2	0,00 m2
BAÑO-1	3,95 m2
BAÑO-2	0,00 m2
TERRAZAS AL 100%	1,80 m2
<b>SUP. ÚTIL VIVIENDA</b>	<b>35,25 m2</b>
<b>SUP. CONSTR. VIVIENDA (INCLUIDAS TERRAZAS AL 100%)</b>	<b>42,70 m2</b>
<b>SUP. CONSTRUIDA COMUNES</b>	<b>10,07 m2</b>
<b>SUPERFIVIE CONSTRUIDA TOTAL</b>	<b>52,77 m2</b>



Diagrama de planta de un edificio que muestra las superficies y pendientes de las distintas zonas:

- Área superior izquierda: SUP. 4,30m<sup>2</sup>
- Área superior central: SUP. 2,45m<sup>2</sup>
- Área superior derecha: SUP. 19,60m<sup>2</sup>
- Área central: SUP. 20,35m<sup>2</sup> (contiene una zona etiquetada como "pendiente 1%")
- Área inferior central: pendiente 30%
- Área inferior derecha: SUP. 25,65m<sup>2</sup>



















*"Experience our experience - Because you deserve the best"*