

REF: # 11477



#### INFO

<b>PRICE:</b>	328.900 €
<b>PROPERTY TYPE:</b>	Villa
<b>LOCATION:</b>	
<b>BEDROOMS:</b>	3
<b>Bathrooms:</b>	2
<b>Build:</b>	106 (m2)
<b>Plot:</b>	222 (m2)
<b>Terrace:</b>	27 (m2)
<b>Year:</b>	-
<b>Floor:</b>	-
<b>Old price</b>	-



#### DESCRIPTION

**NEW BUILD SEMI-DETACHED VILLAS IN LOS MONTESINOS** Residential of 12 New Build semi-detached villas in Los Montesinos, La Herrada. Modern villas with 3 bedrooms and 2 bathrooms, open plan kitchen with the living room build-in wardrobes, terrace, private garden, parking space. An options for a solarium and a private pool at an extra cost. Villas located in the municipality of Los Montesinos, at one of the most well known and quite area of La Herrada. The typical town of Los Montesinos is strategically located 10 minutes by car from the beaches and leisure of Torrevieja (with all the services of a big city: theatre, 2 hospitals, international schools, etc.), from several golf courses and with easy access to the A7 motorway to reach Alicante airport in 20 min. In the urbanization there are supermarkets and bars for day-to-day service, being a rural and quiet environment. The climate in this area guarantees 300 days of sunshine a year with an average temperature of 20°C, which, together with the rich gastronomy and cultural and sports activities available in its surroundings, makes this area an ideal place to establish a second residence for vacation or a quiet place to live permanently.

## VIEWS

- Panoramic views

## AIRCONDITIONING

- Central airconditioning

## PARKING

Parking no Cars: 1

---

## GARDEN AND TERRACES

- Fenced
- Private garden

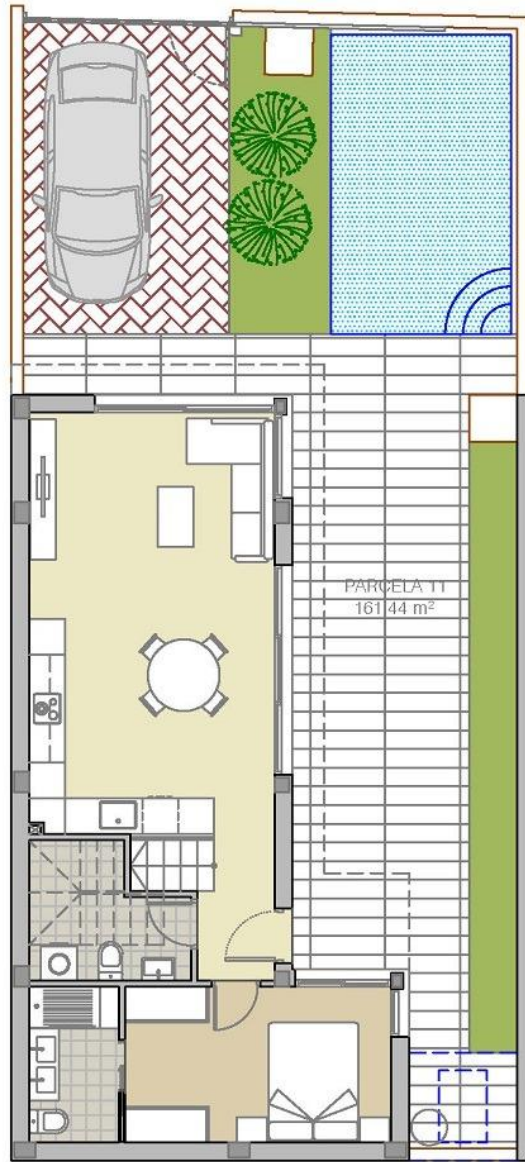
PROPERTY GALLERY

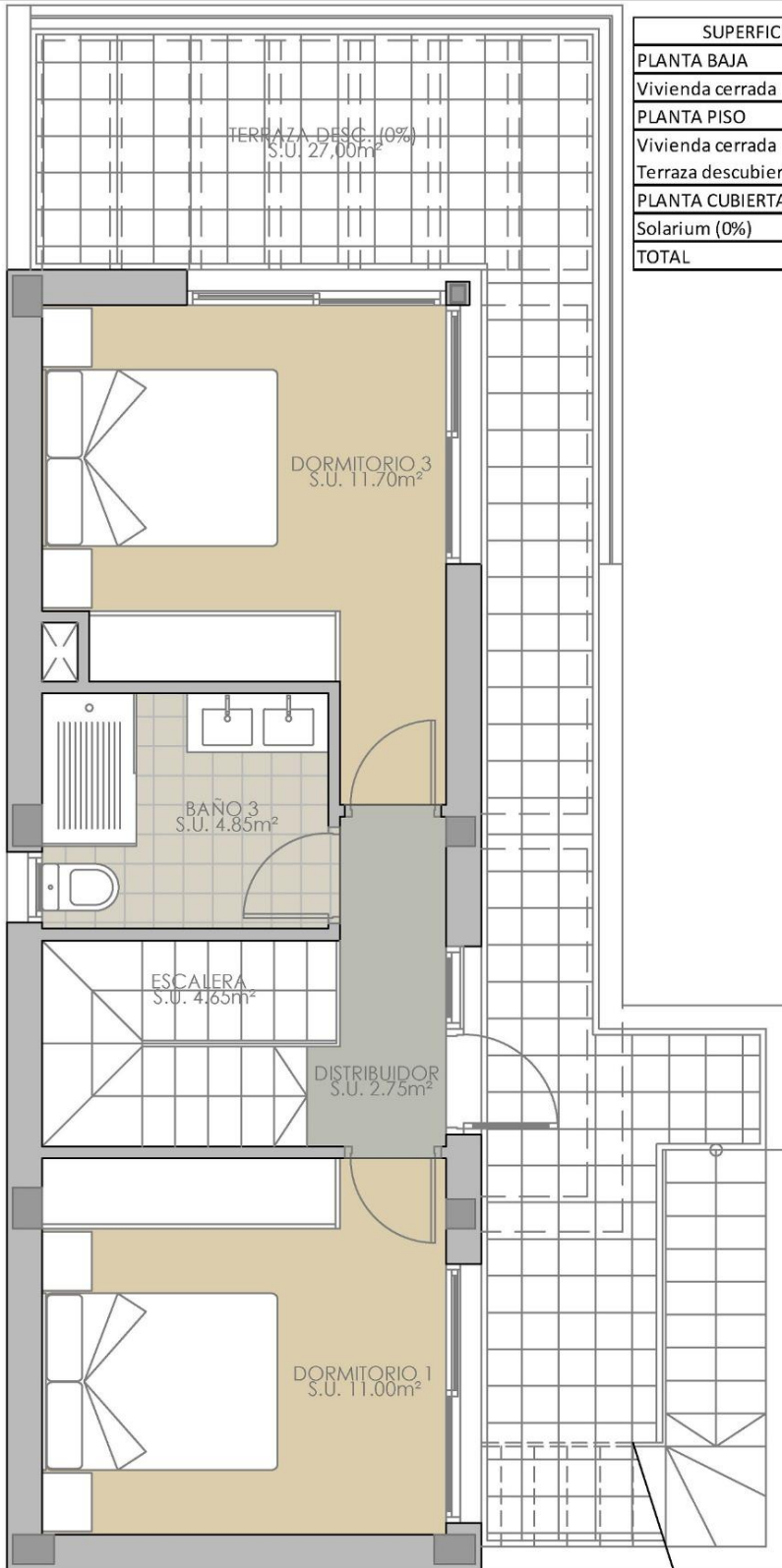






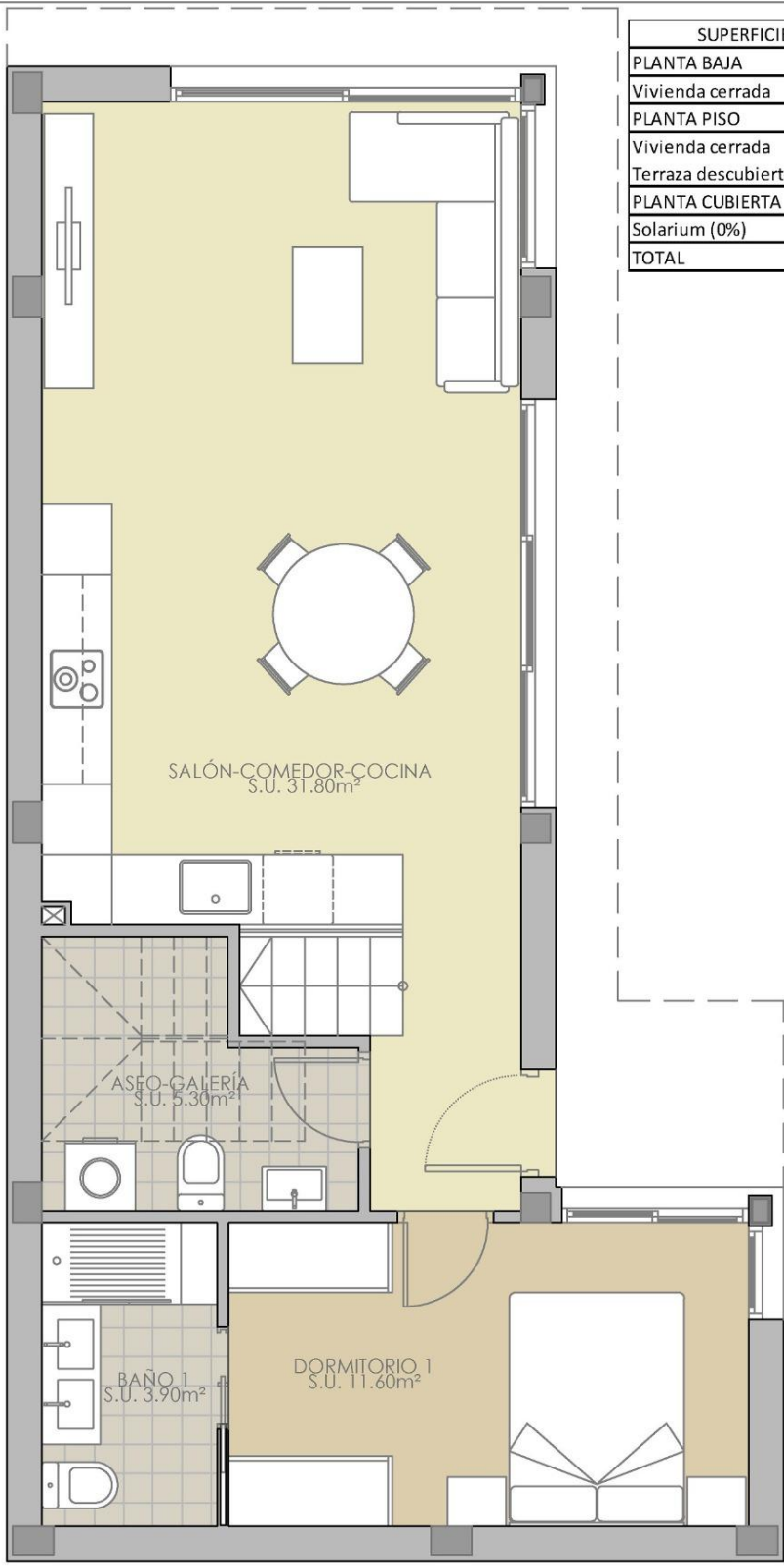






SUPERFICIES CONSTRUIDAS TOTALES	
<b>PLANTA BAJA</b>	
Vivienda cerrada	66,40 m <sup>2</sup>
<b>PLANTA PISO</b>	
Vivienda cerrada	40,35 m <sup>2</sup>
Terraza descubierta (0%)	27,00 m <sup>2</sup>
<b>PLANTA CUBIERTA</b>	
Solarium (0%)	40,95 m <sup>2</sup>
<b>TOTAL</b>	<b>106,75 m<sup>2</sup></b>





SUPERFICIES CONSTRUIDAS TOTALES	
<b>PLANTA BAJA</b>	
Vivienda cerrada	66,40 m <sup>2</sup>
<b>PLANTA PISO</b>	
Vivienda cerrada	40,35 m <sup>2</sup>
Terraza descubierta (0%)	27,00 m <sup>2</sup>
<b>PLANTA CUBIERTA</b>	
Solarium (0%)	40,95 m <sup>2</sup>
<b>TOTAL</b>	<b>106,75 m<sup>2</sup></b>

SALÓN-COMEDOR-COCINA  
S.U. 31.80m<sup>2</sup>

ASEO-GALERÍA  
S.U. 5.30m<sup>2</sup>

BAÑO 1  
S.U. 3.90m<sup>2</sup>

DORMITORIO 1  
S.U. 11.60m<sup>2</sup>







*"Experience our experience - Because you deserve the best"*