

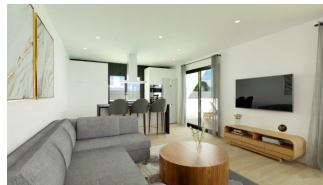


REF: # 11570



INFO

PRICE:	256.000 €
PROPERTY TYPE:	Villa
LOCATION:	
BEDROOMS:	3
Bathrooms:	2
Build:	108 (m2)
Plot:	444 (m2)
Terrace:	20 (m2)
Year:	-
Floor:	-
Old price	-



DESCRIPTION

NEW BUILD VILLAS INLAND - LOCATED IN HONDON DE LAS NIEVES. Discover the elegance and comfort of these beautiful 108m2 detached villas, designed to offer you an exceptional lifestyle, all on the ground floor. Enjoy the privacy offered by this villa, where you can relax in your own garden, create an oasis of tranquillity, or even add a swimming pool (at an extra cost) to enjoy the warm summer days. The property is distributed in two large areas: Day area: Where we find a large living-dining room with open plan kitchen (kitchen furniture included) that connects with the large porch of modern character through its two large windows, leading to the outdoor garden area and why not... to the pool. As an extra space it has a laundry area strategically placed in the distribution of the house where it will be very easily accessible from anywhere in the house. Sleeping area: In this area there are 3 bedrooms. The master bedroom has a large dressing room and en-suite bathroom. There is also a second bathroom to serve the rest of the bedrooms and the rest of the house. Located in a quiet and residential environment, this villa allows you to enjoy the privacy and tranquillity you desire, while being within walking distance to amenities, shops, supermarkets, restaurants. It is the perfect balance between serene seclusion and the convenience of modern living. In this urbanisation in Hondón de las Nieves, every day is an opportunity to connect with the world. Hondón de las Nieves is a town in the Valencian Community, Spain. It is located in the southwest of the province of Alicante, in the region of Vinalopó Medio. The beaches and Alicante Airport are closely just 30 minutes drive away.

VIEWS

- Panoramic views

**GARDEN AND
TERRACES**

- Private garden















PLANTA BAJA (1/100)



Superficie construida: 97.70m²
 Superficie construida porche: 10.30m²
 Superficie construida total: 108.00m²

DIN A4 - Escala 1/100
 0 1 2 3 4 5

"Experience our experience - Because you deserve the best"