



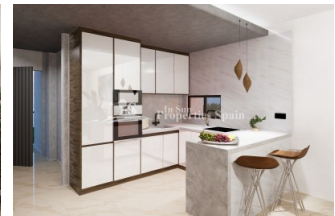
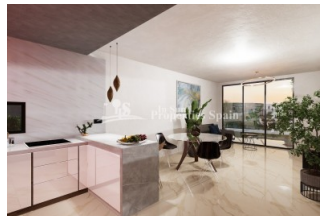
REF: # 11686

()



#### INFO

<b>PRICE:</b>	445.000 €
<b>PROPERTY TYPE:</b>	Villa
<b>LOCATION:</b>	()
<b>BEDROOMS:</b>	3
<b>Bathrooms:</b>	2
<b>Build:</b>	103 (m2)
<b>Plot:</b>	236 (m2)
<b>Terrace:</b>	105 (m2)
<b>Year:</b>	-
<b>Floor:</b>	-
<b>Old price</b>	-



#### DESCRIPTION

NEW BUILD VILLAS IN ALGORFA, LA FINCA GOLF RESORT - built over one level! This wonderful 103m2 villa built on one level has a plot of 236m2 and consists of 3 bedrooms, 2 bathrooms, open plan kitchen, the living room with open views to the terrace, solarium, private garden with the pool and parking. Residential complex located in La Finca Golf resort, in the municipality of Algorfa, in the Vega Baja area of the Costa Blanca South. Only 15 minutes drive from the sandy beaches of Guardamar del Segura, and only 35 minutes from Alicante airport. The larger towns of Almoradi, Benijófar and Ciudad Quesada are a short drive away. Torrevieja and Orihuela Costa, with their large shopping centres, are 15 minutes away.

<b>STYLE</b> <ul style="list-style-type: none"><li>• Modern</li><li>• Contemporary</li></ul>	<b>VIEWS</b> <ul style="list-style-type: none"><li>• Panoramic views</li></ul>	<b>AIRCONDITIONING</b> <ul style="list-style-type: none"><li>• Central airconditioning</li></ul>	<b>DISTANCE TO :</b> <div>Beach : +10 Km</div> <div>Airport: 50 Km</div> <div>Town center : 6 Km</div>
<b>FURNITURE</b> <ul style="list-style-type: none"><li>• Not furnished</li></ul>	<b>PARKING</b> <div>Parking no Cars: 1</div>	<b>FLOORING</b> <ul style="list-style-type: none"><li>• Tile floors</li><li>• Stone floors</li></ul>	<b>KITCHEN</b> <ul style="list-style-type: none"><li>• Open kitchen</li></ul>
<b>GARDEN AND TERRACES</b> <ul style="list-style-type: none"><li>• Fenced</li><li>• Private garden</li></ul>	<b>EXTRA</b> <ul style="list-style-type: none"><li>• Built in wardrobes</li><li>• Alarm</li><li>• Reinforced door</li><li>• Double glazed windows</li></ul>		

























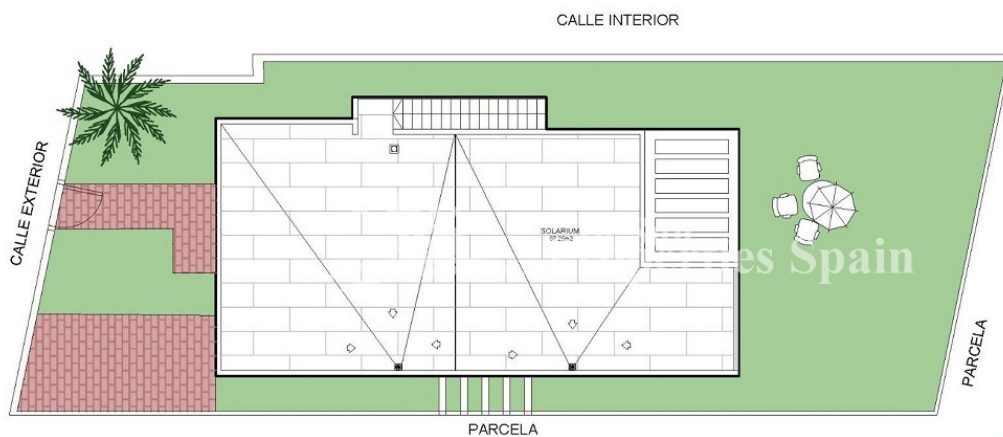




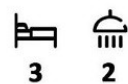






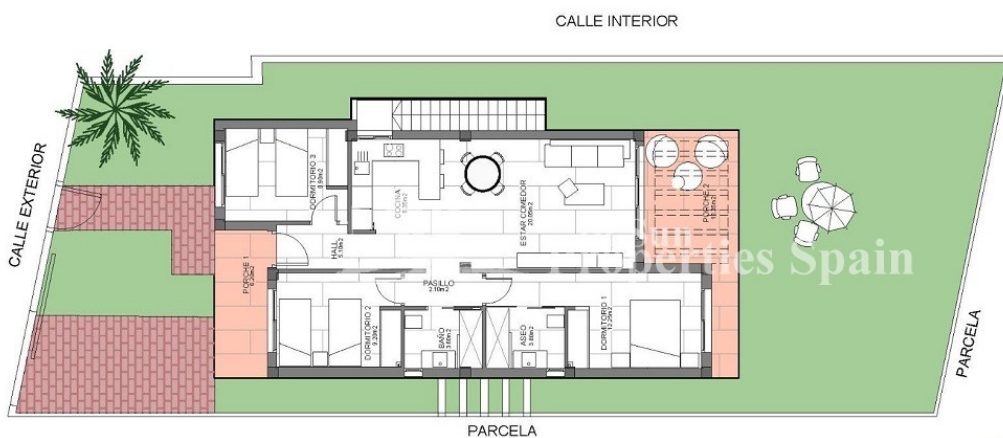
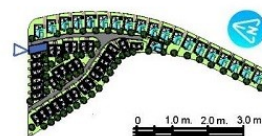


Nº: 20



SUPERFICIES(M2)  
VIVIENDA.....85,15\*  
PORCHES.....18,55  
TOTAL \_ 103,70

PARCELA\_ 236  
SOLARIUM\_ 87,25

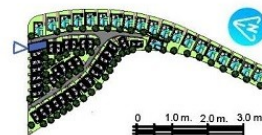


Nº: 20



SUPERFICIES(M2)  
VIVIENDA.....85,15\*  
PORCHES.....18,55  
TOTAL \_ 103,70

PARCELA\_ 236  
SOLARIUM\_ 87,25







*"Experience our experience - Because you deserve the best"*